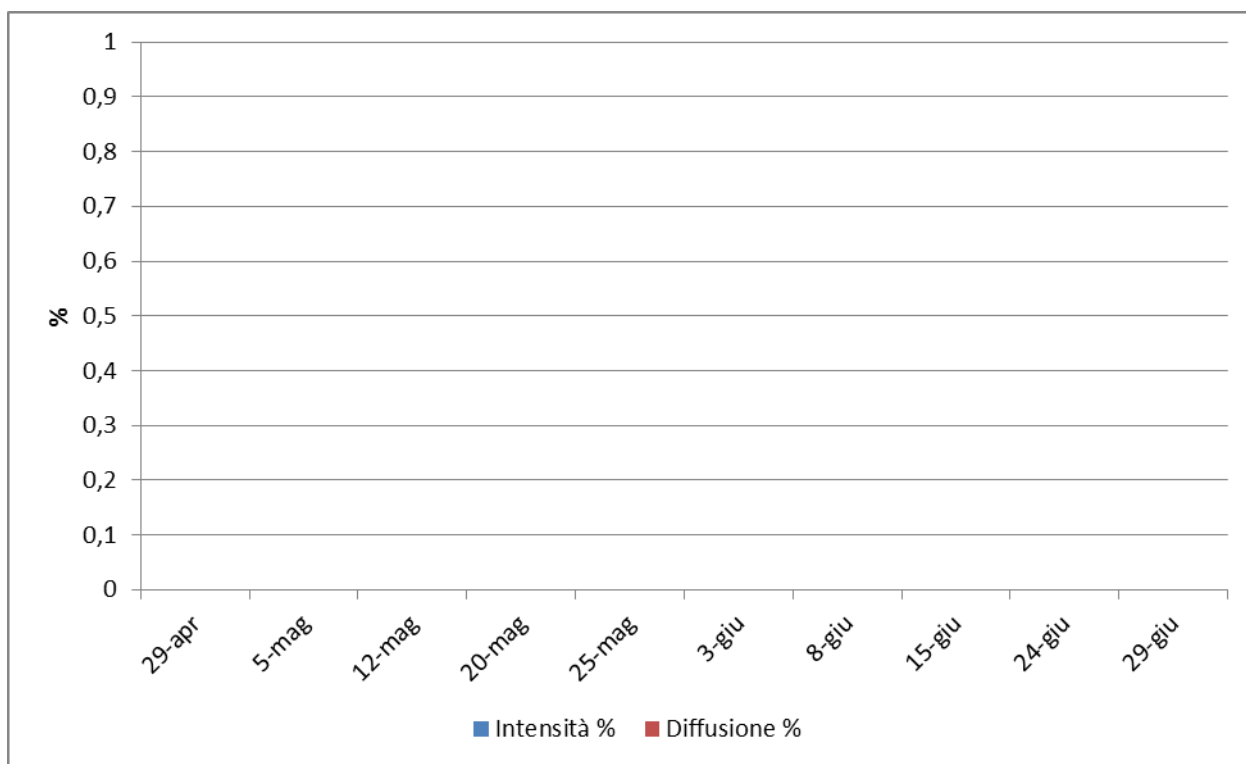
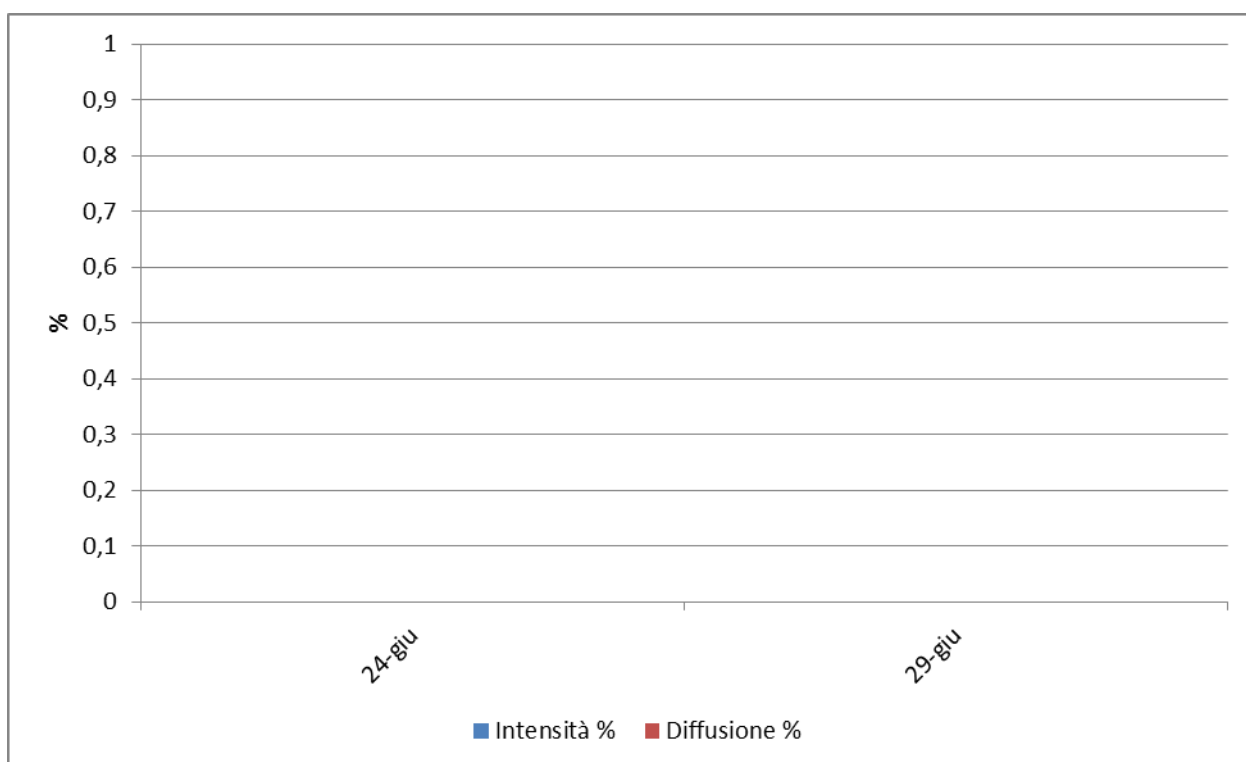


**Sintomi di oidio rilevati su foglia e grappolo in 19 vigneti distribuiti sul territorio regionale - 2015.**

**DOC FRIULI ANNIA – Castions di Strada (UD) – Merlot.**

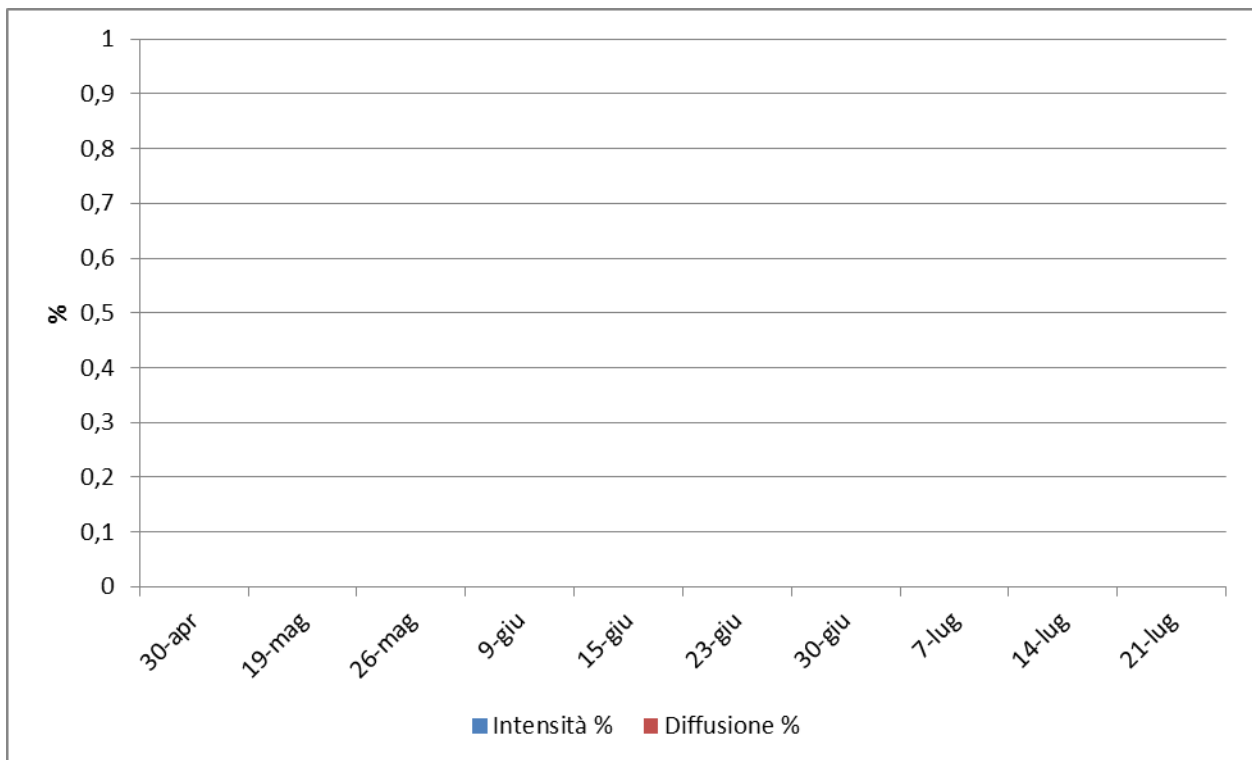


**Foglia**

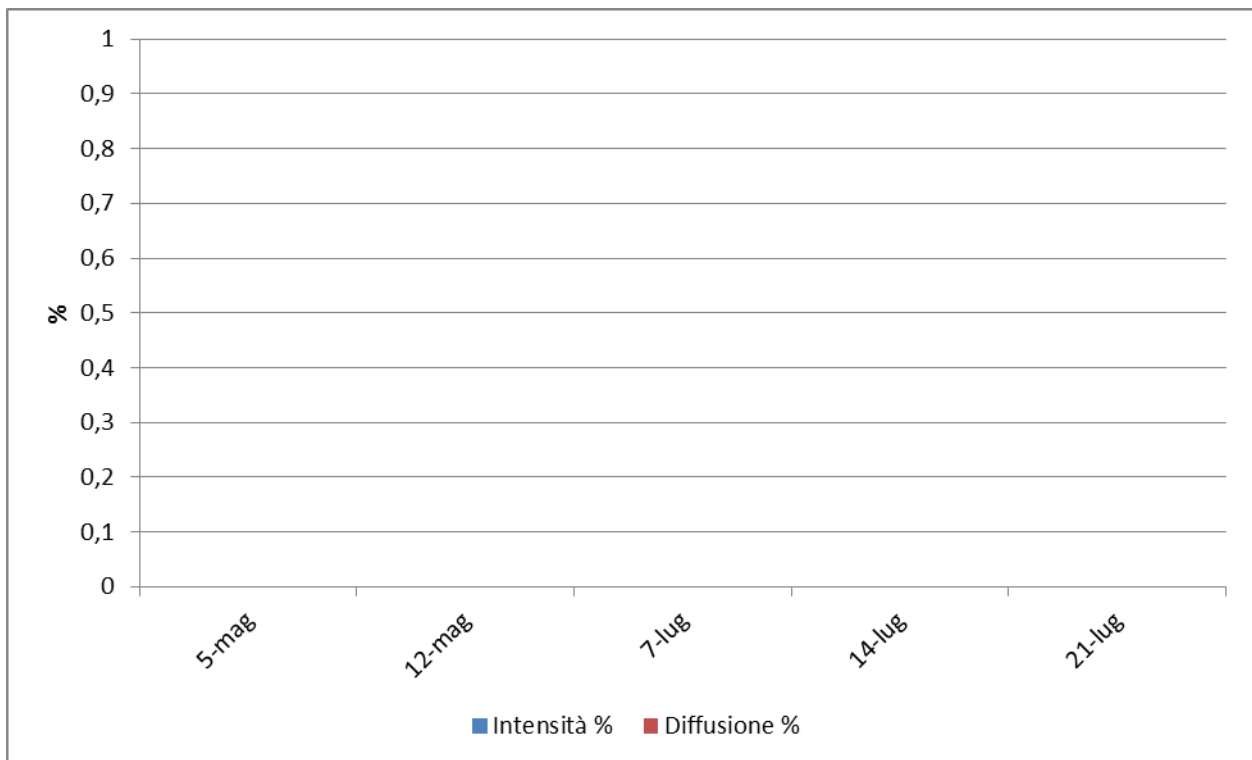


**Grappolo**

**DOC FRIULI AQUILEIA – Ruda (UD) – Merlot.**

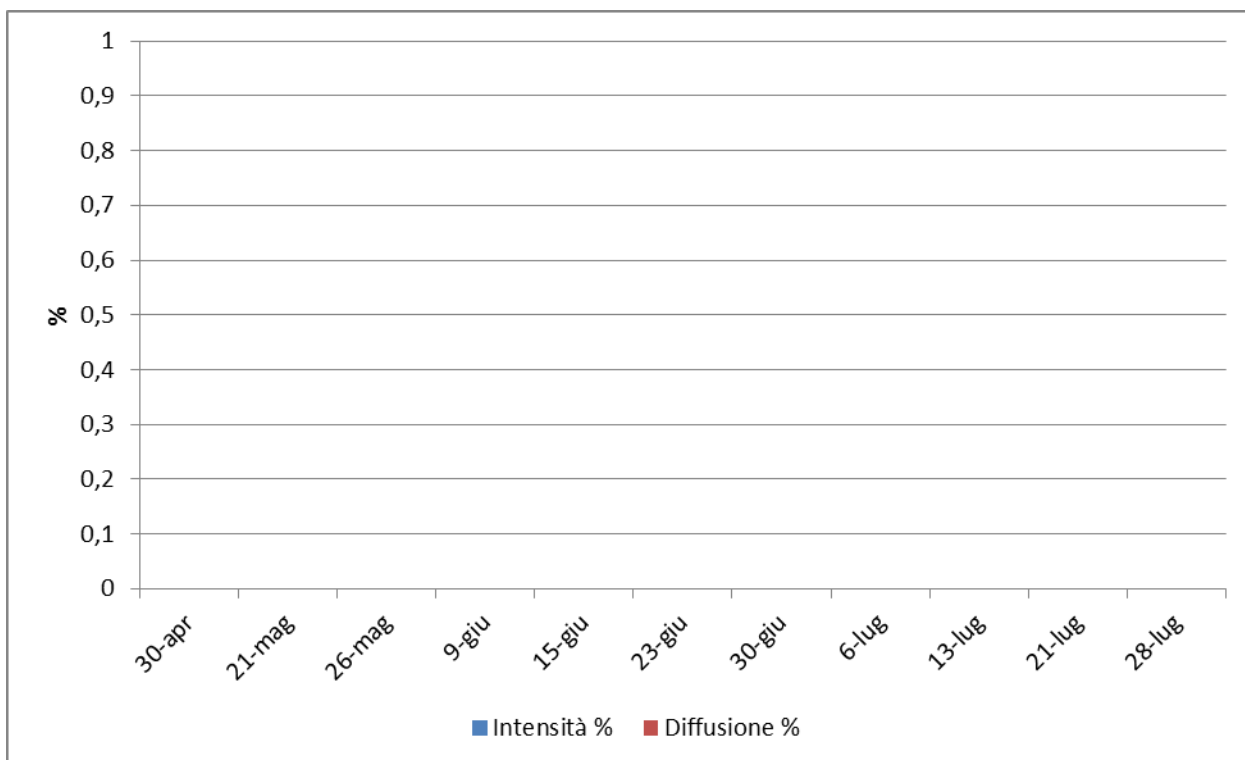


**Foglia**

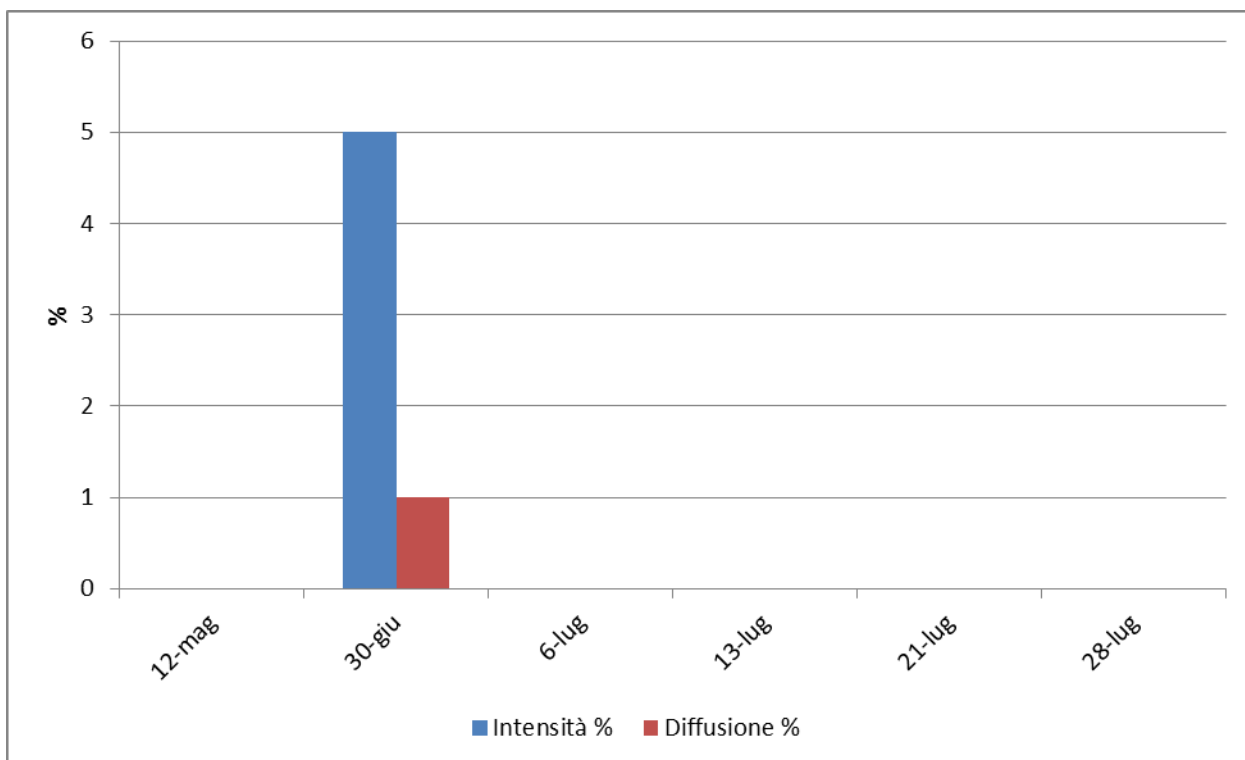


**Grappolo**

**DOC FRIULI AQUILEIA – Fiumicello (UD) – Merlot.**

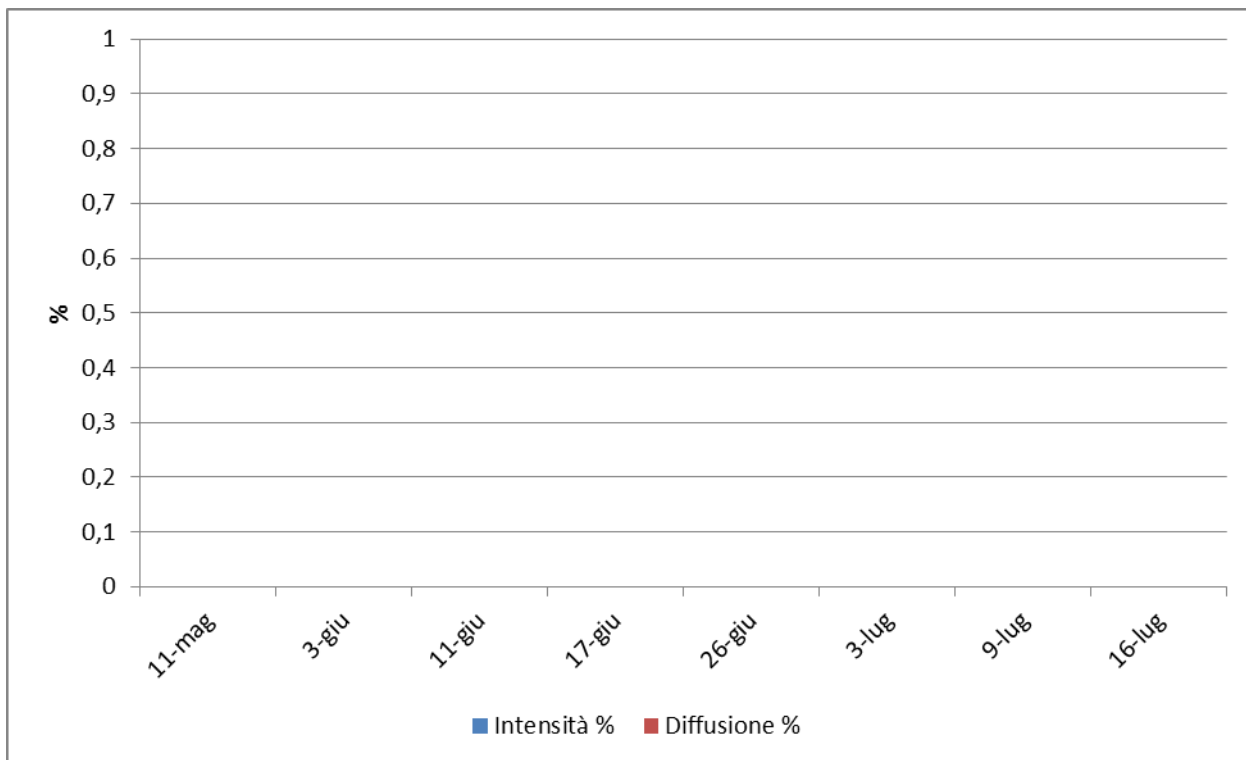


**Foglia**

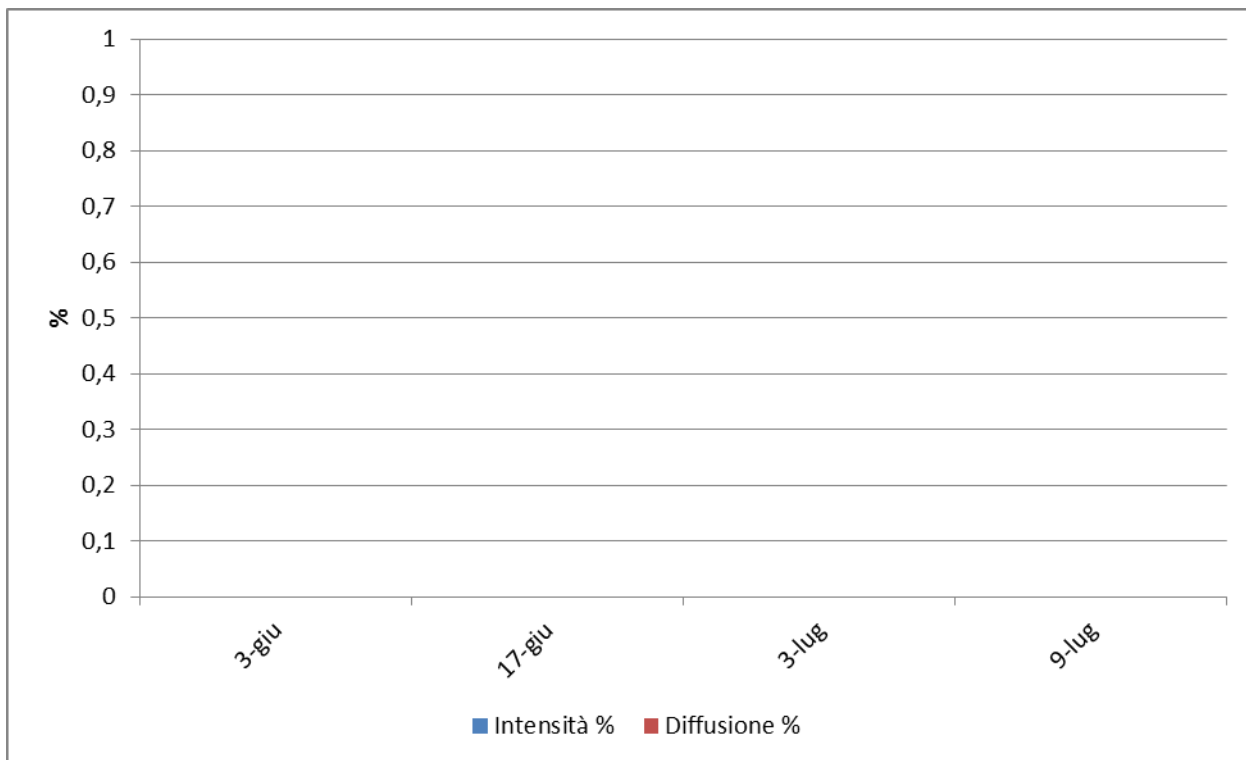


**Grappolo**

**DOC COLLIO – Cormons (GO) – Merlot.**

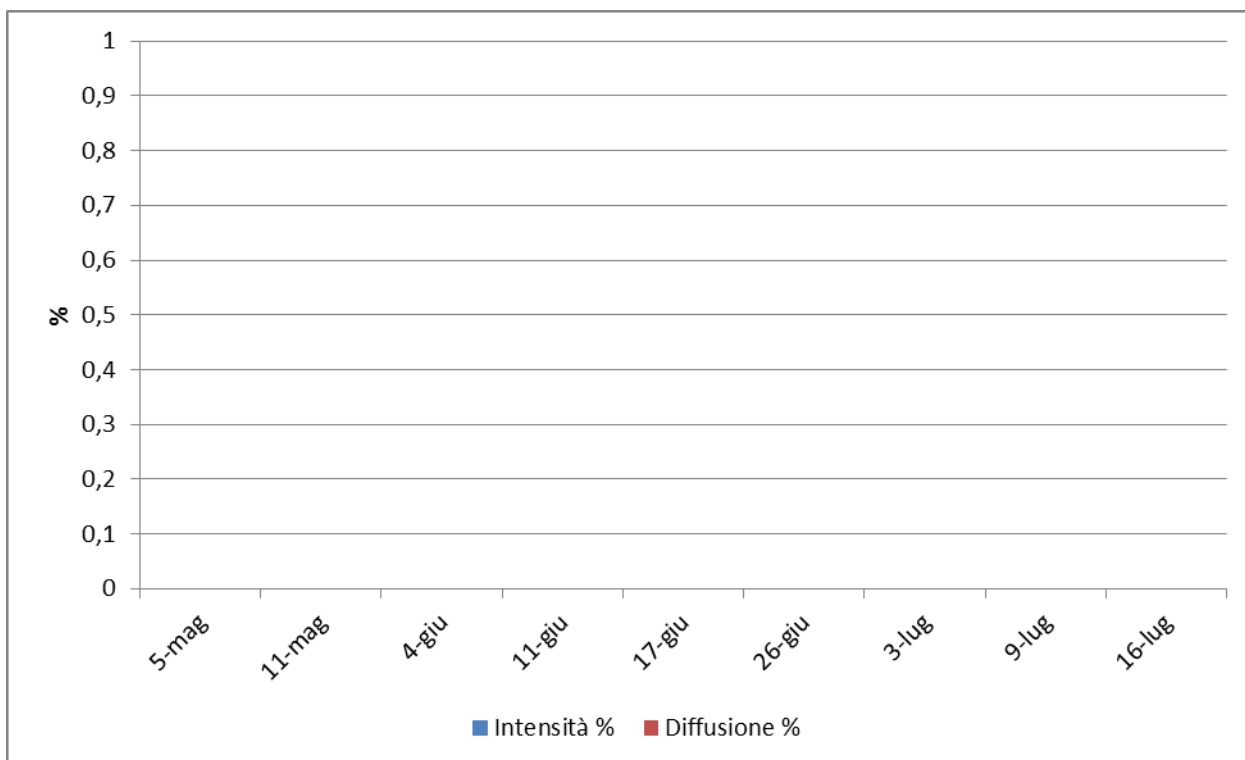


**Foglia**

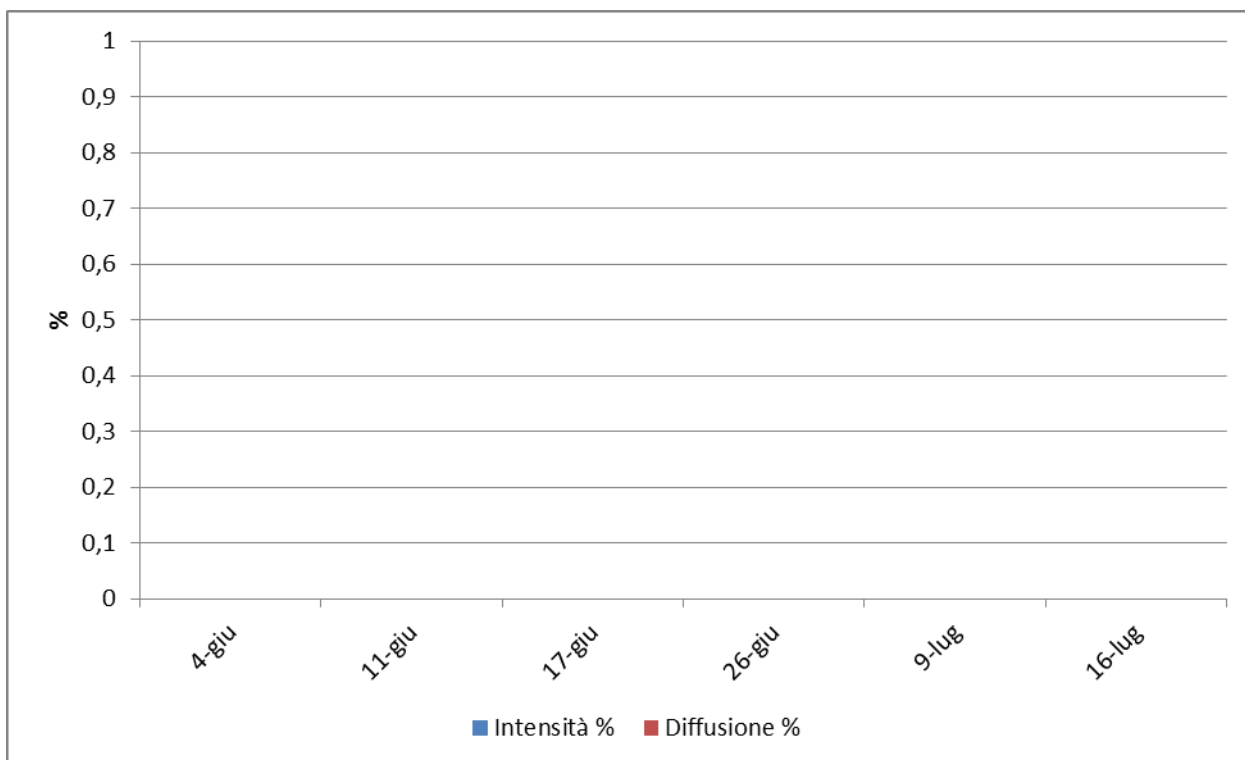


**Grappolo**

**DOC COLLIO – Capriva del Friuli (GO) – Merlot.**

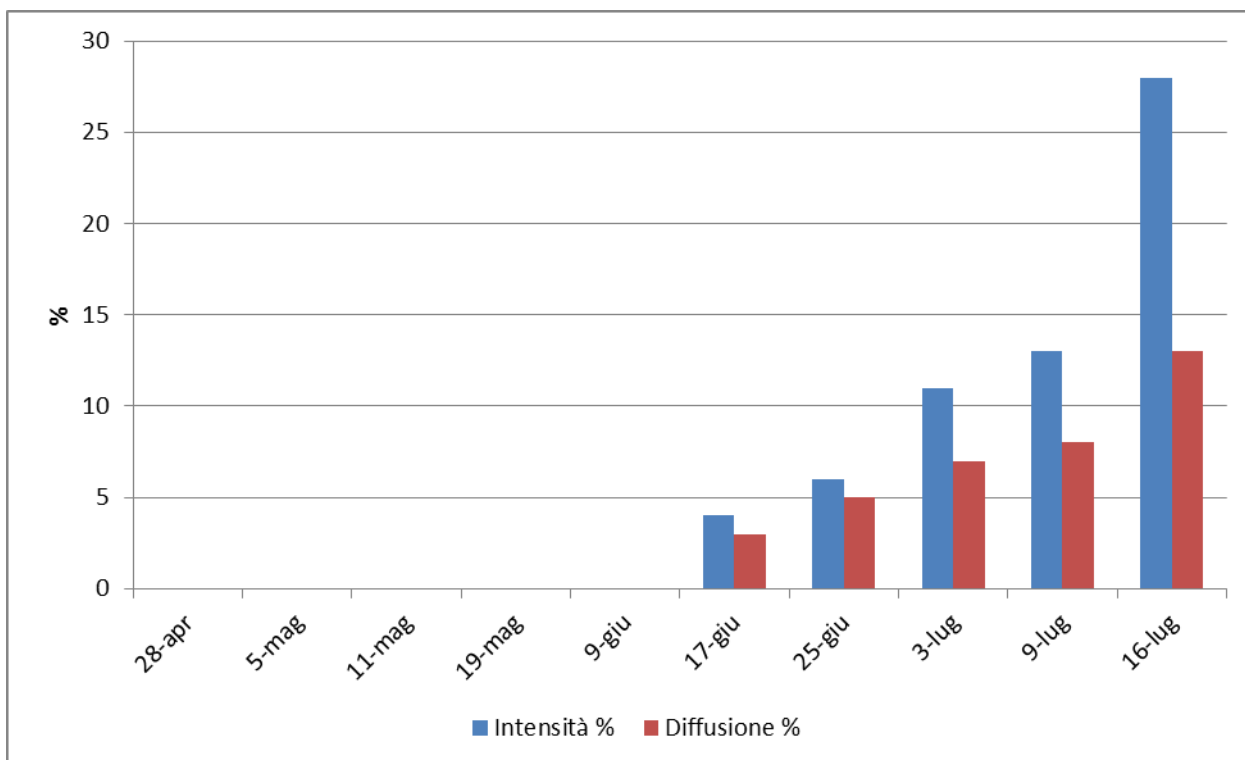


**Foglia**

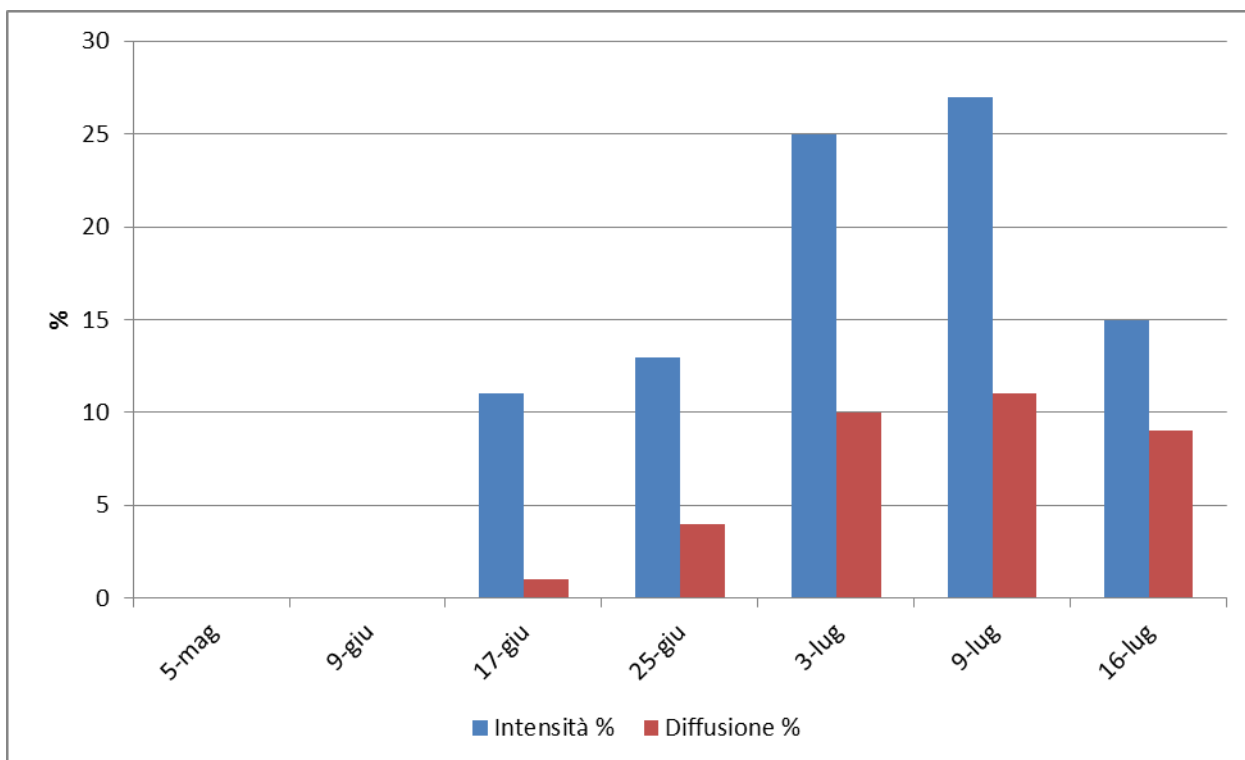


**Grappolo**

**DOC COLLIO – Dolegna del Collio (GO) – Pinot grigio.**

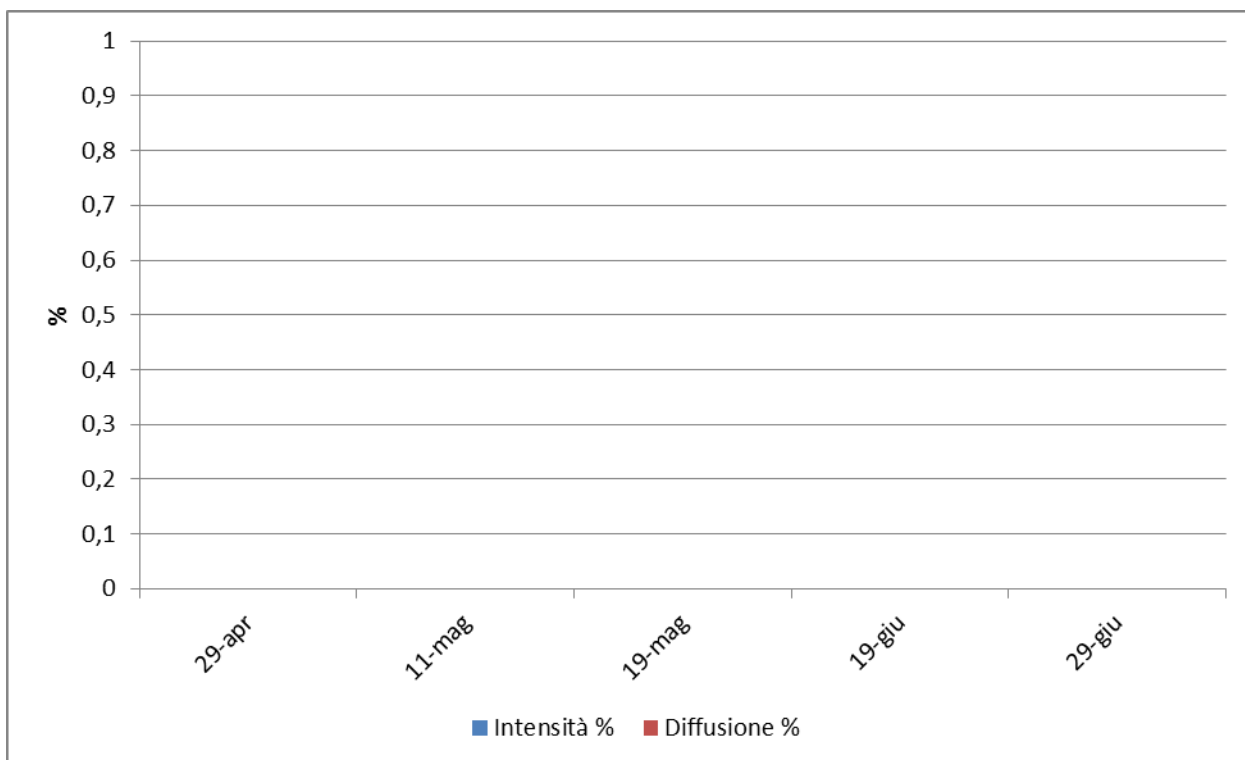


**Foglia**

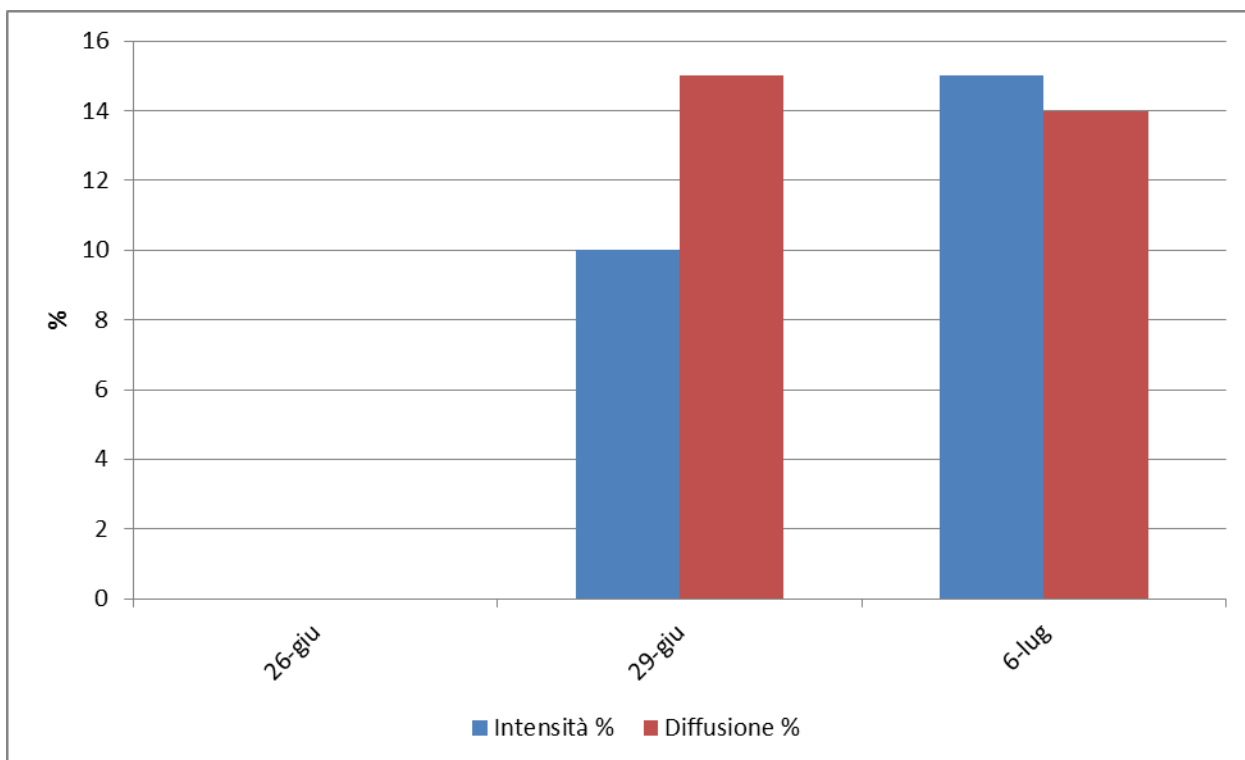


**Grappolo**

**FRIULI COLLI ORIENTALI – Corno di Rosazzo (UD) – Merlot.**

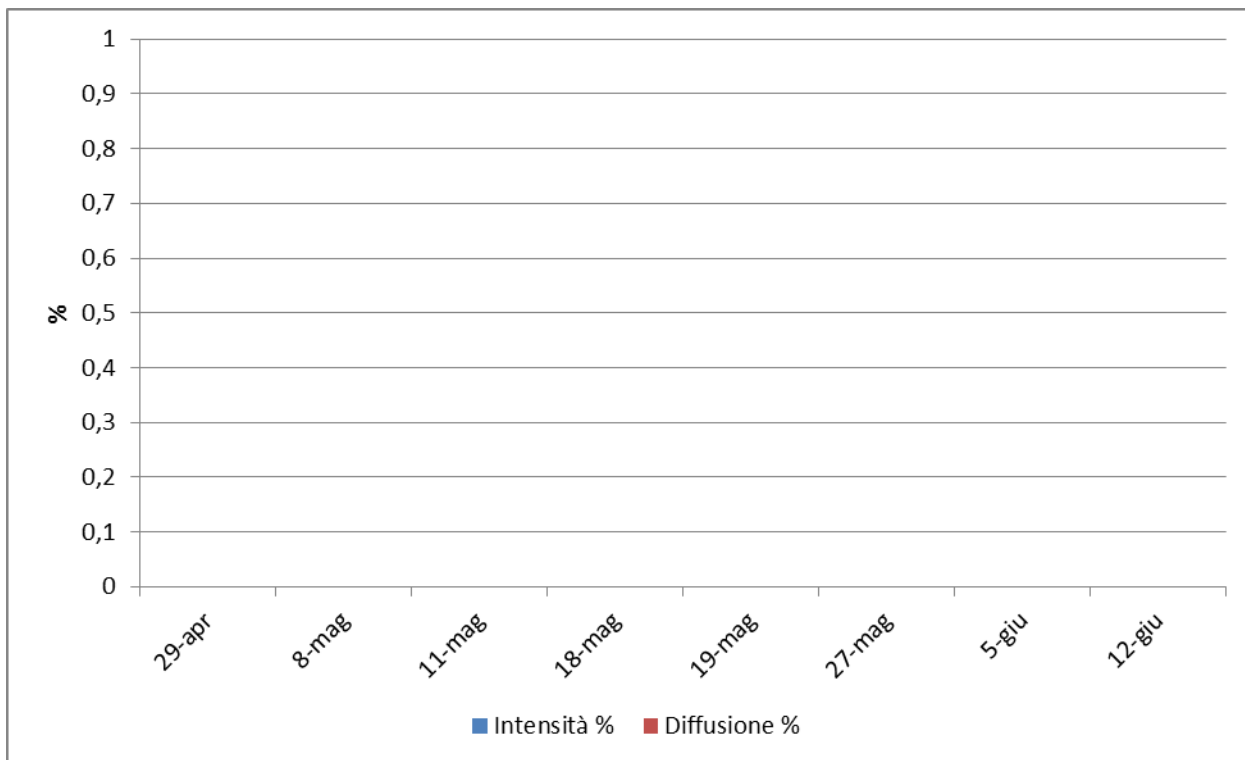


**Foglia**

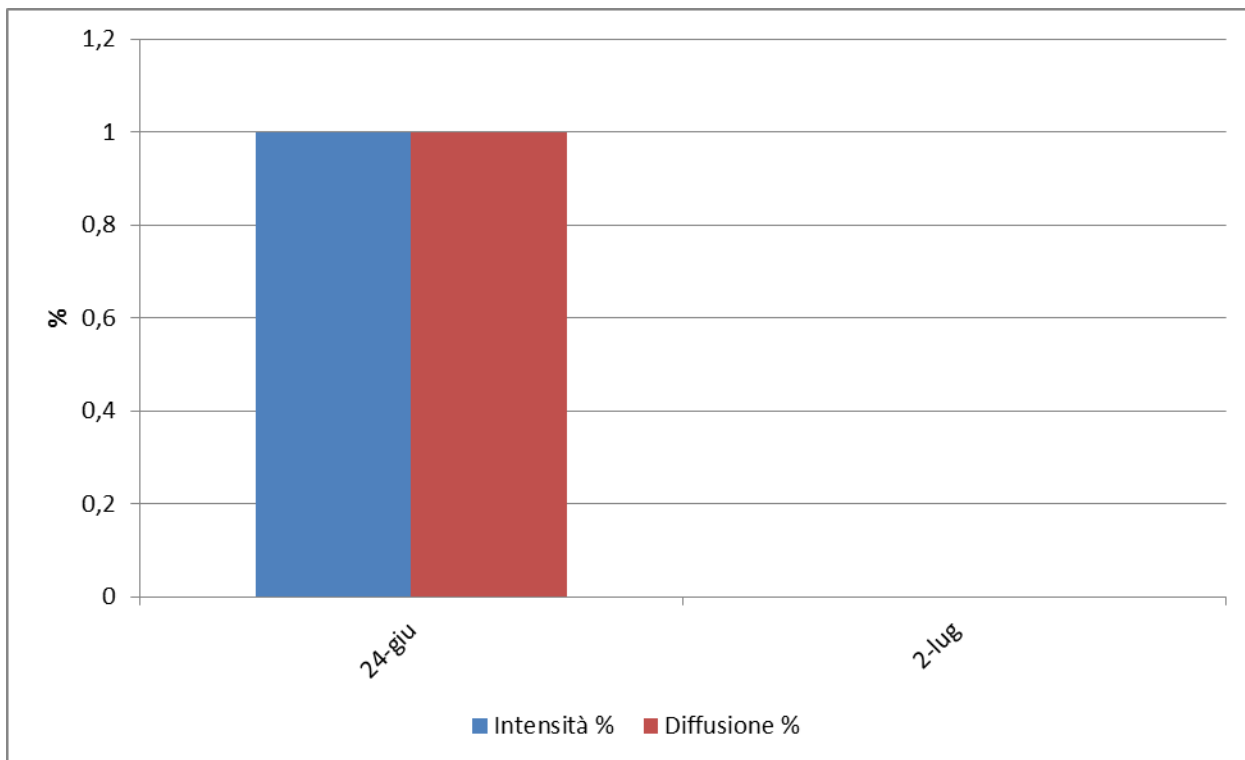


**Grappolo**

**FRIULI COLLI ORIENTALI – Cividale (UD) – Cabernet Sauvignon.**



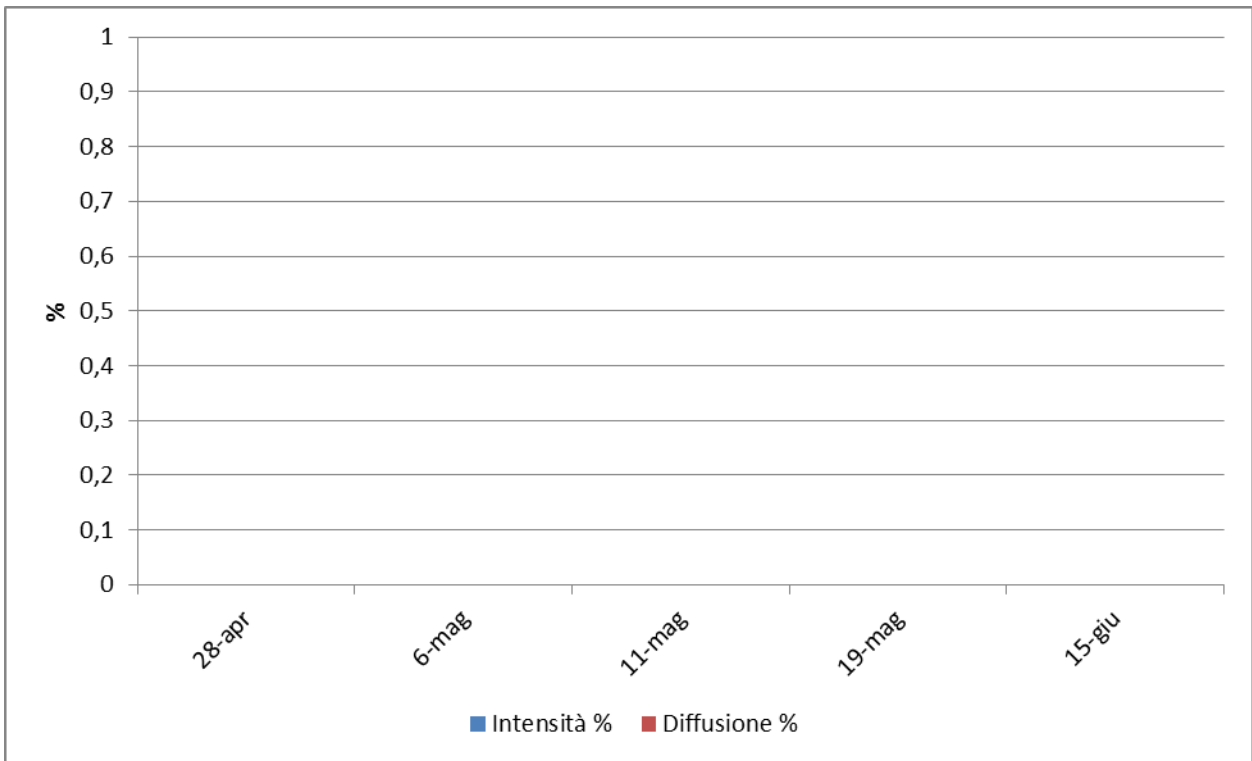
**Foglia**



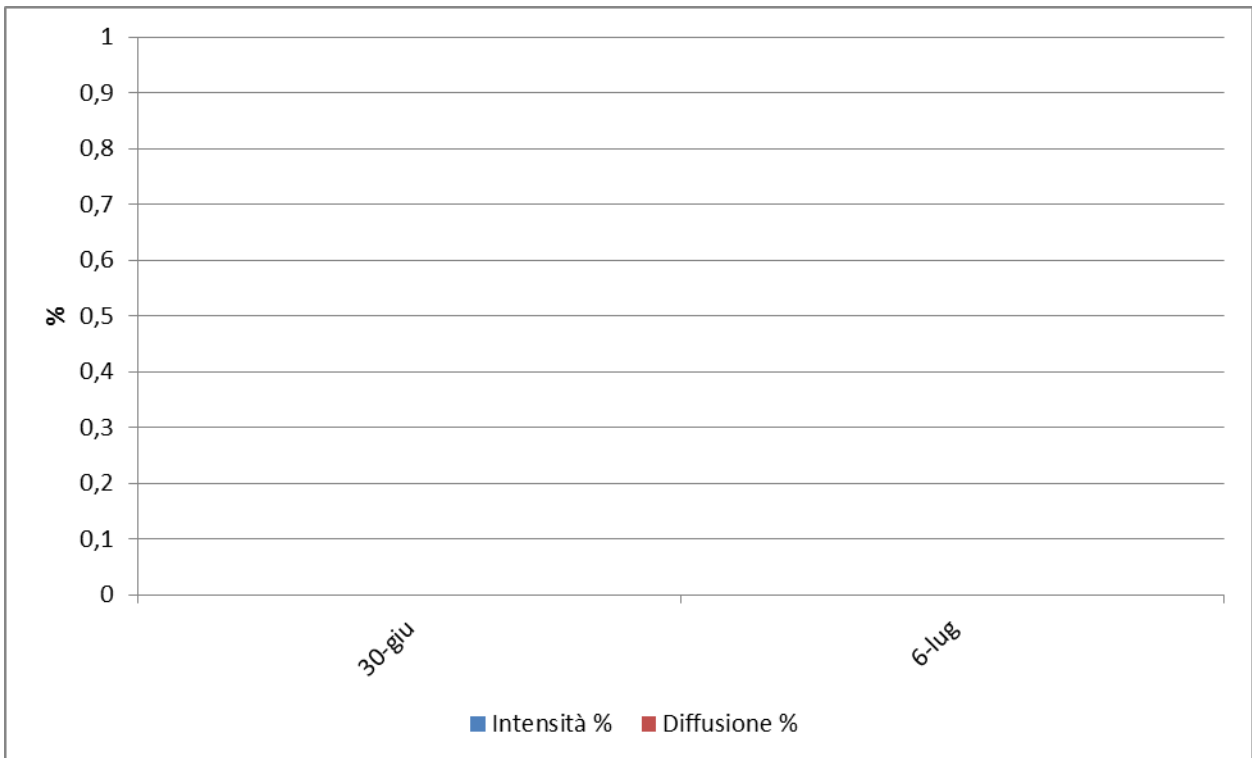
**Grappolo**



**FRIULI COLLI ORIENTALI – Faedis (UD) – Merlot.**

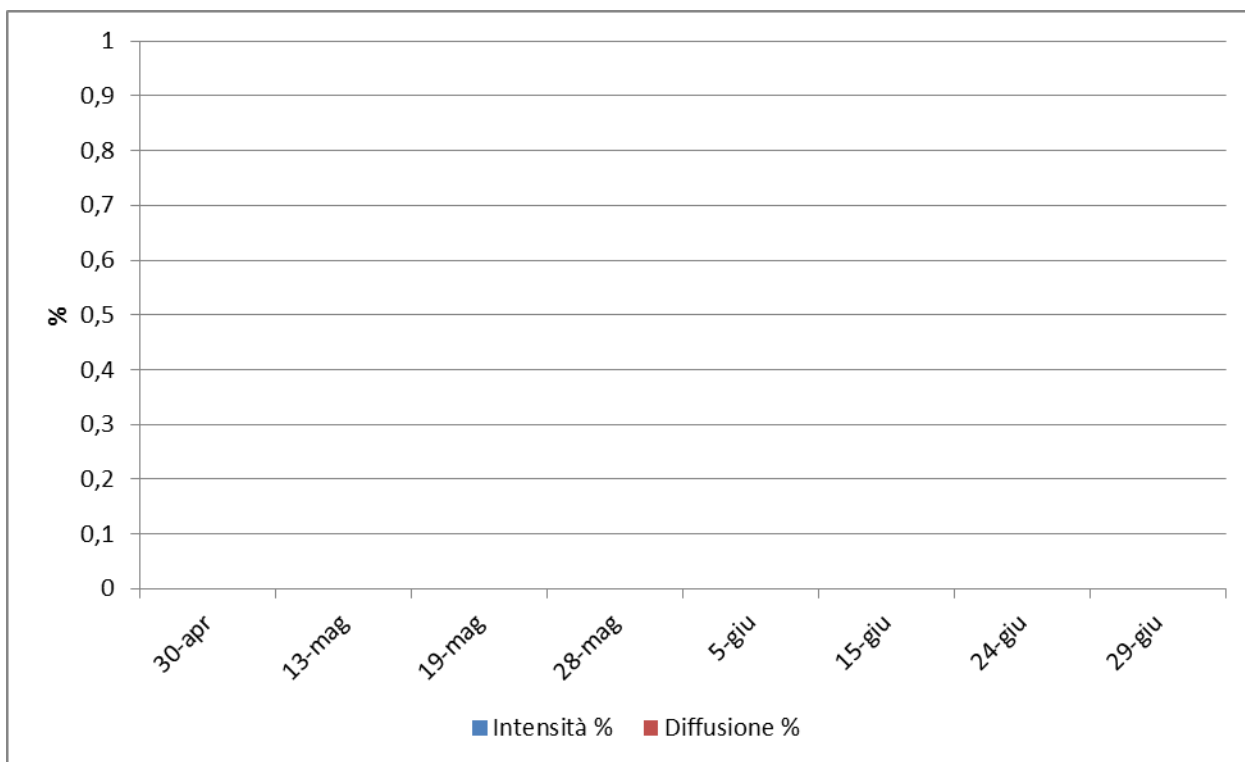


**Foglia**

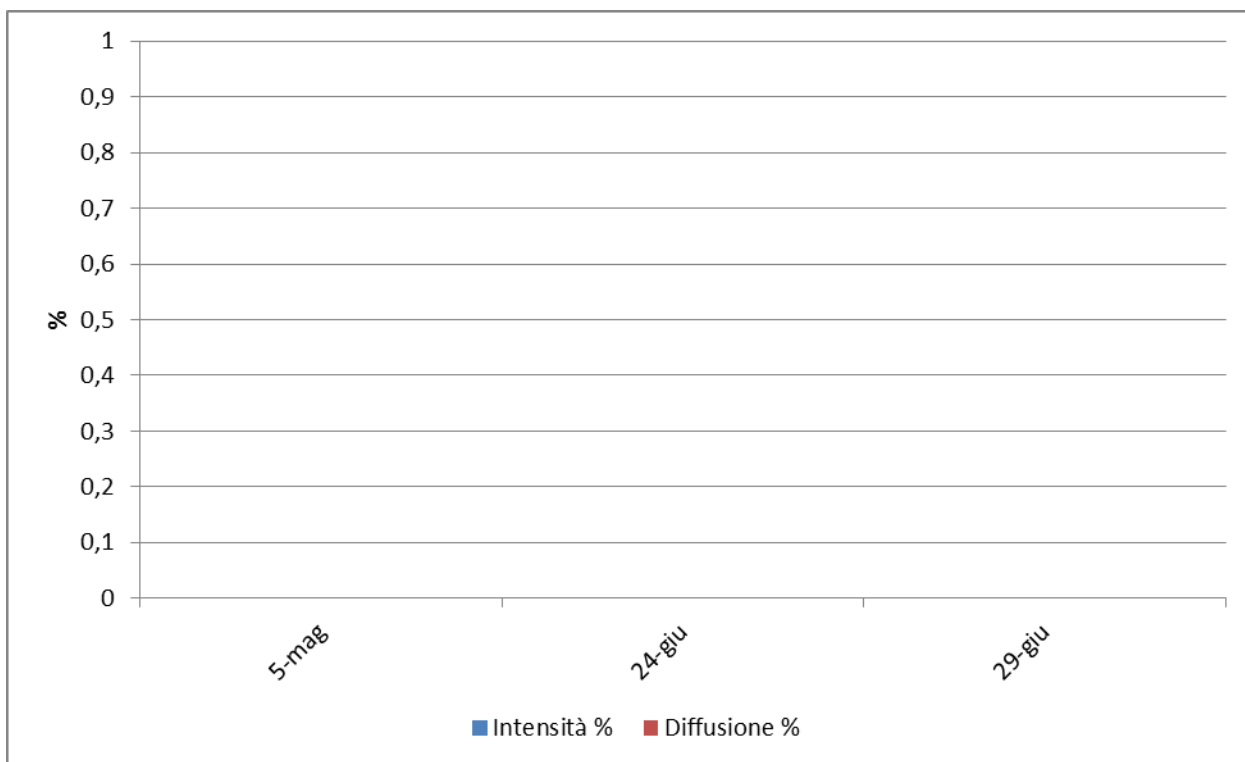


**Grappolo**

**DOC FRIULI GRAVE – Mortegliano (UD) – Pinot grigio.**

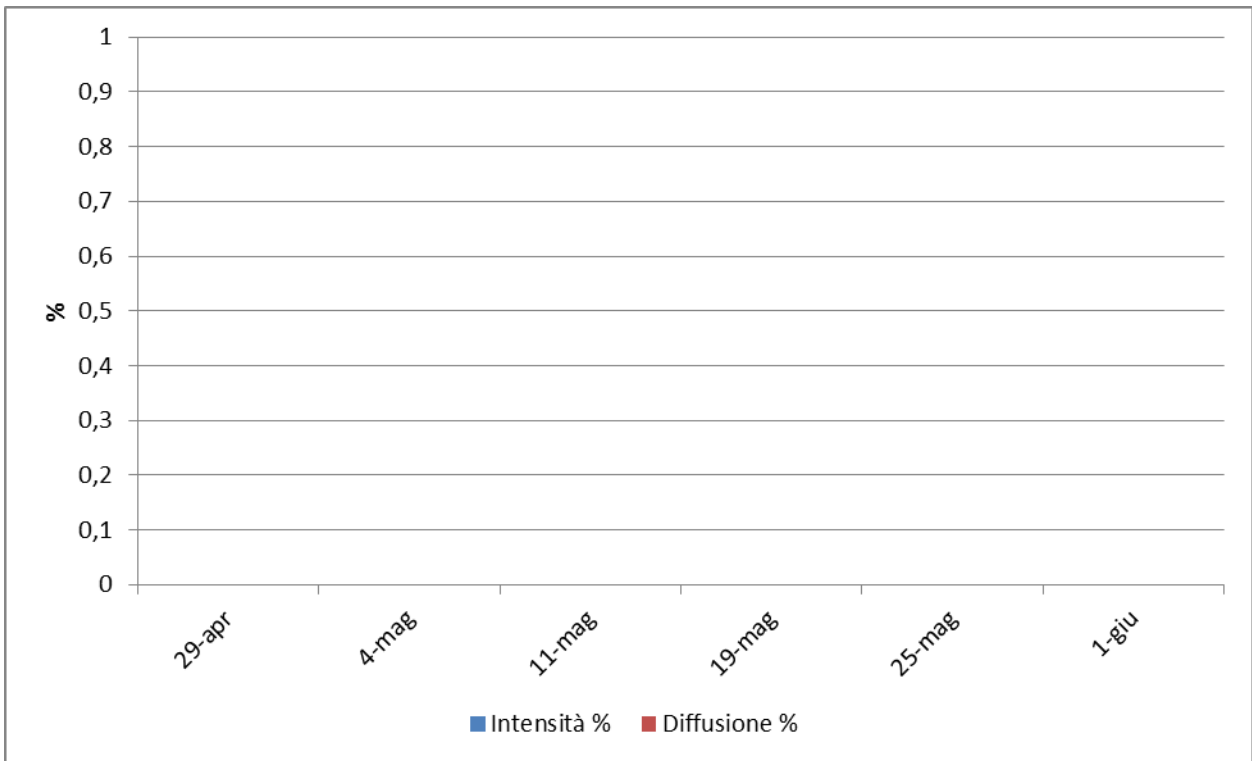


**Foglia**

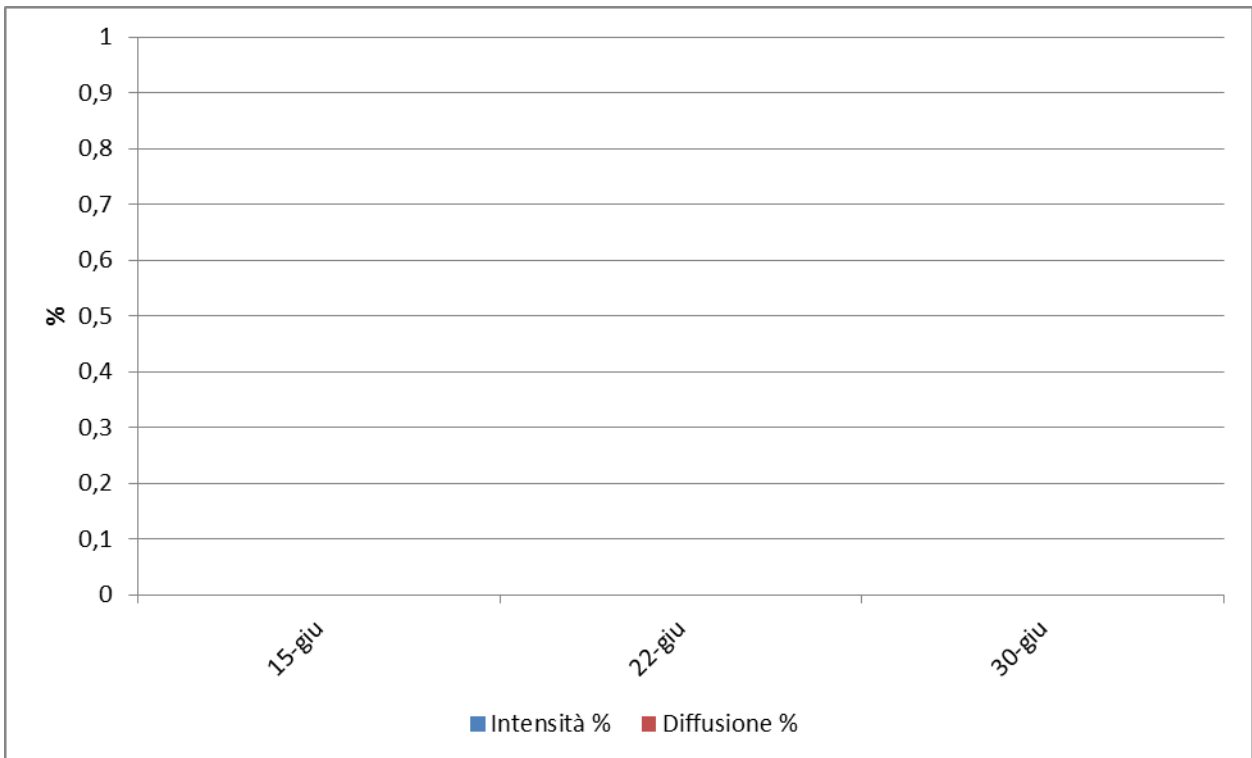


**Grappolo**

**DOC FRIULI GRAVE – Castions di Strada (UD) – Merlot.**

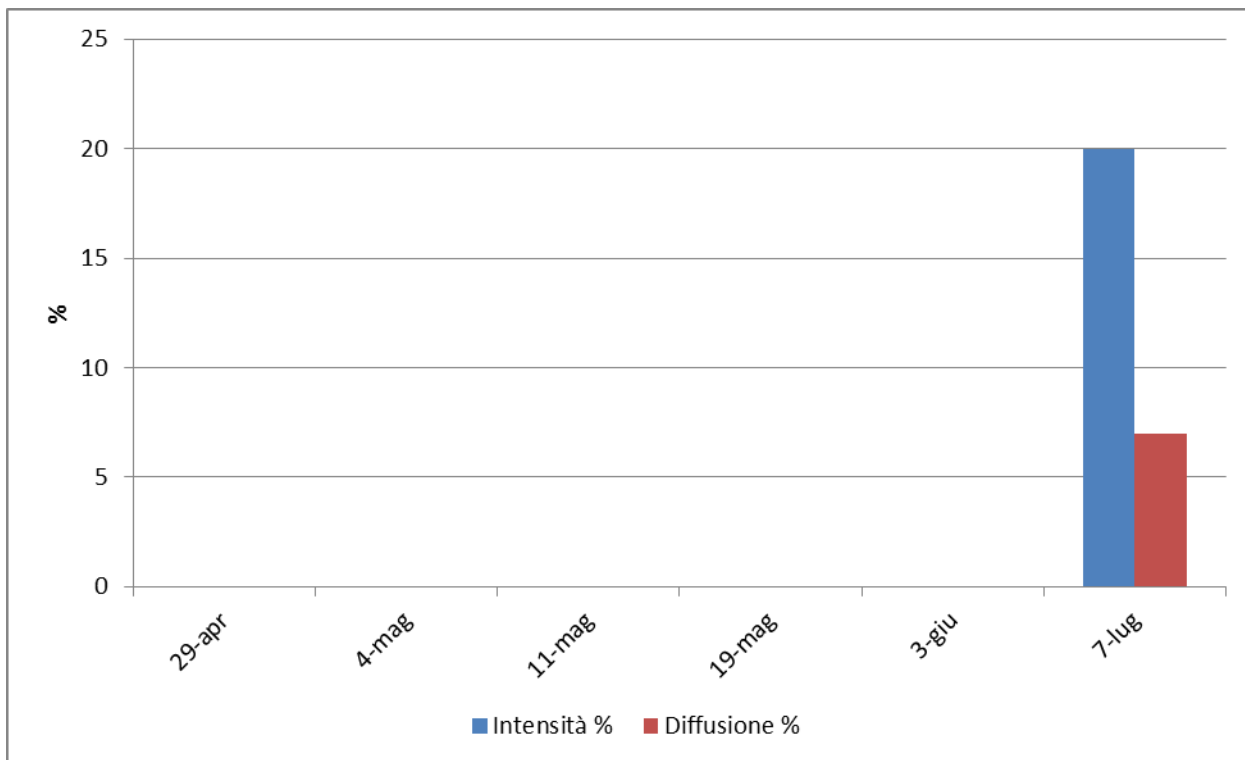


**Foglia**

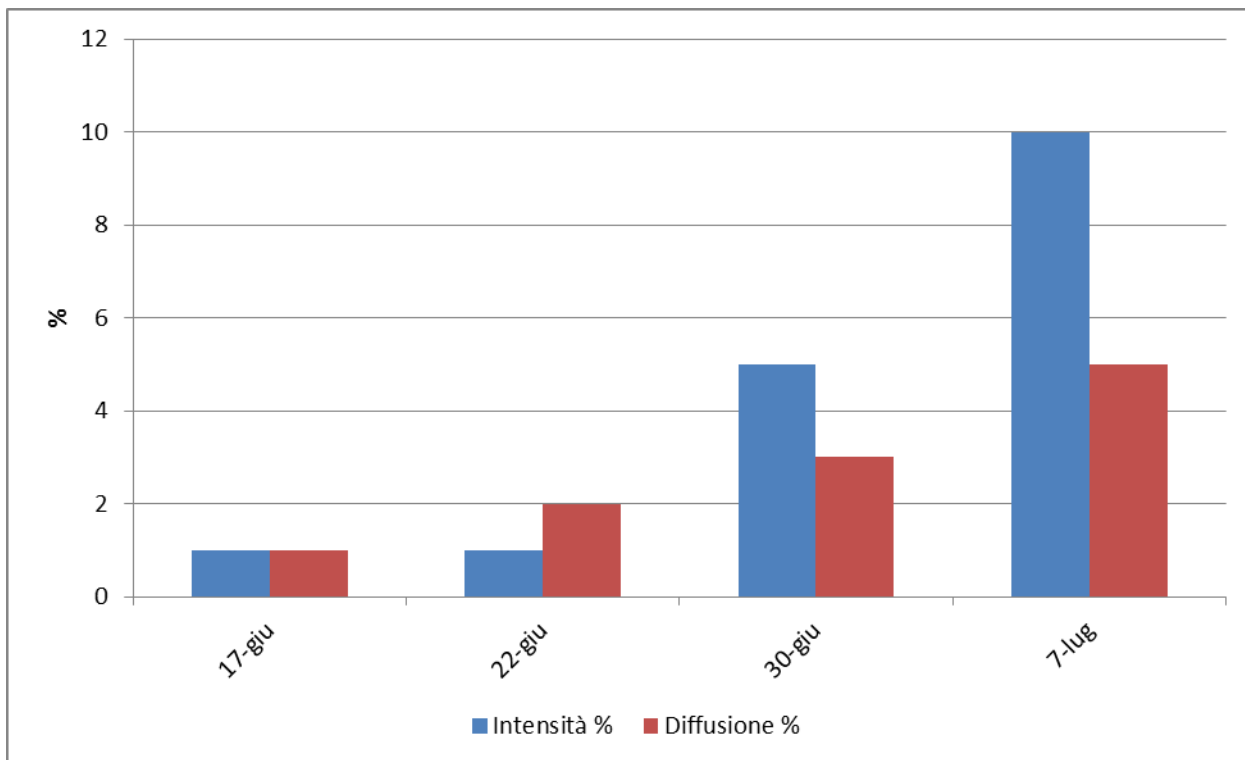


**Grappolo**

**DOC FRIULI GRAVE – Codroipo - Beano (UD) – Pinot grigio.**

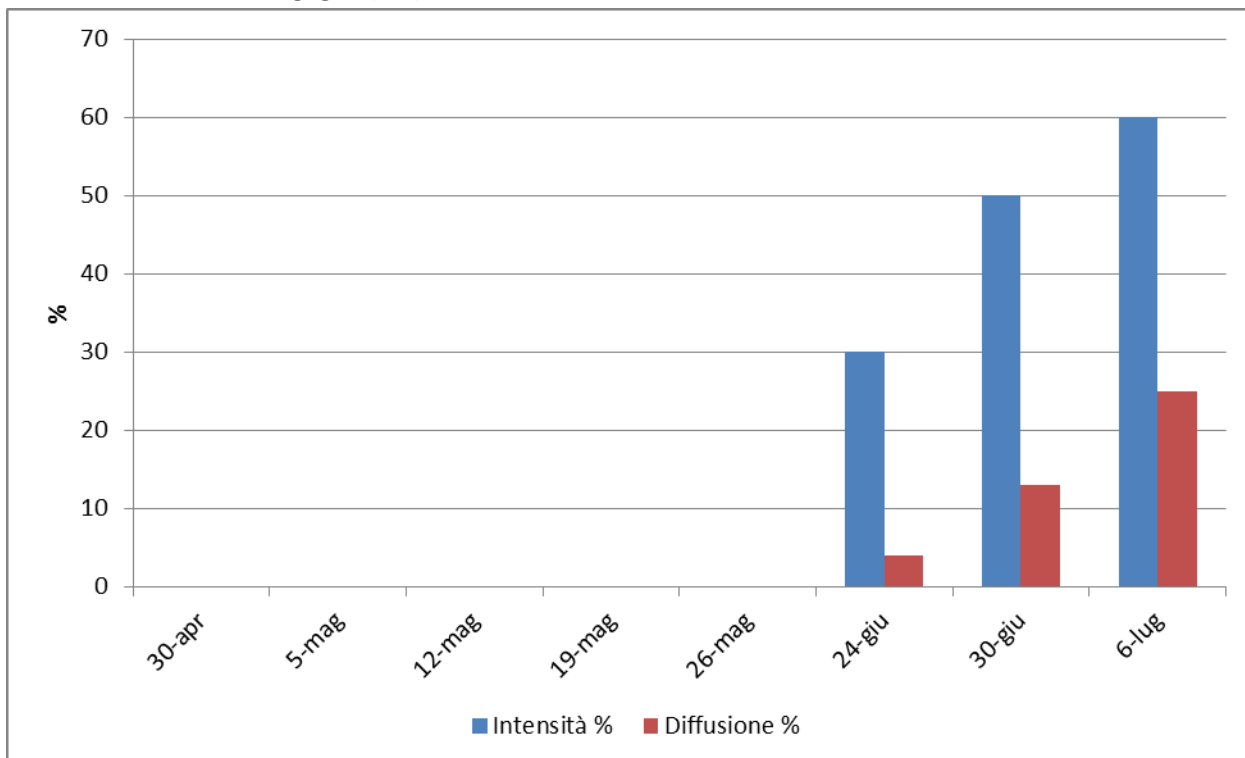


**Foglia**

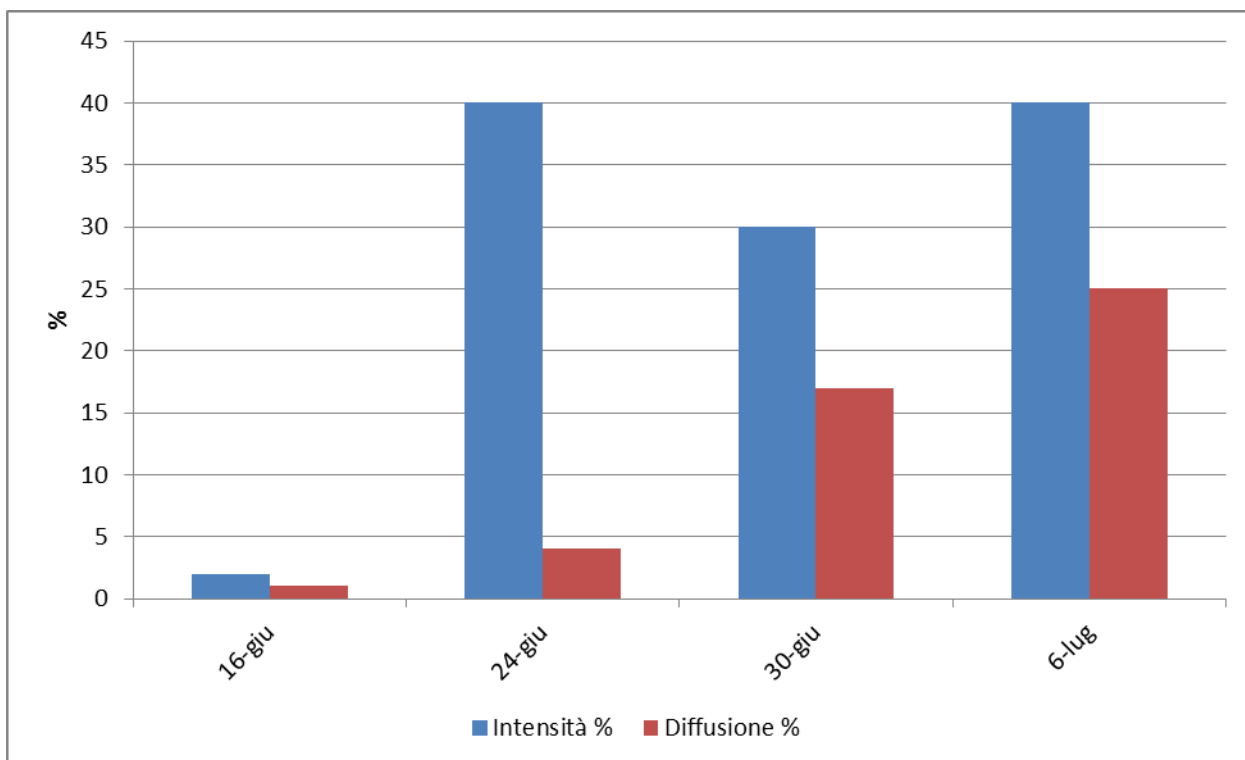


**Grappolo**

**DOC FRIULI GRAVE – Fagagna (UD) – Merlot.**

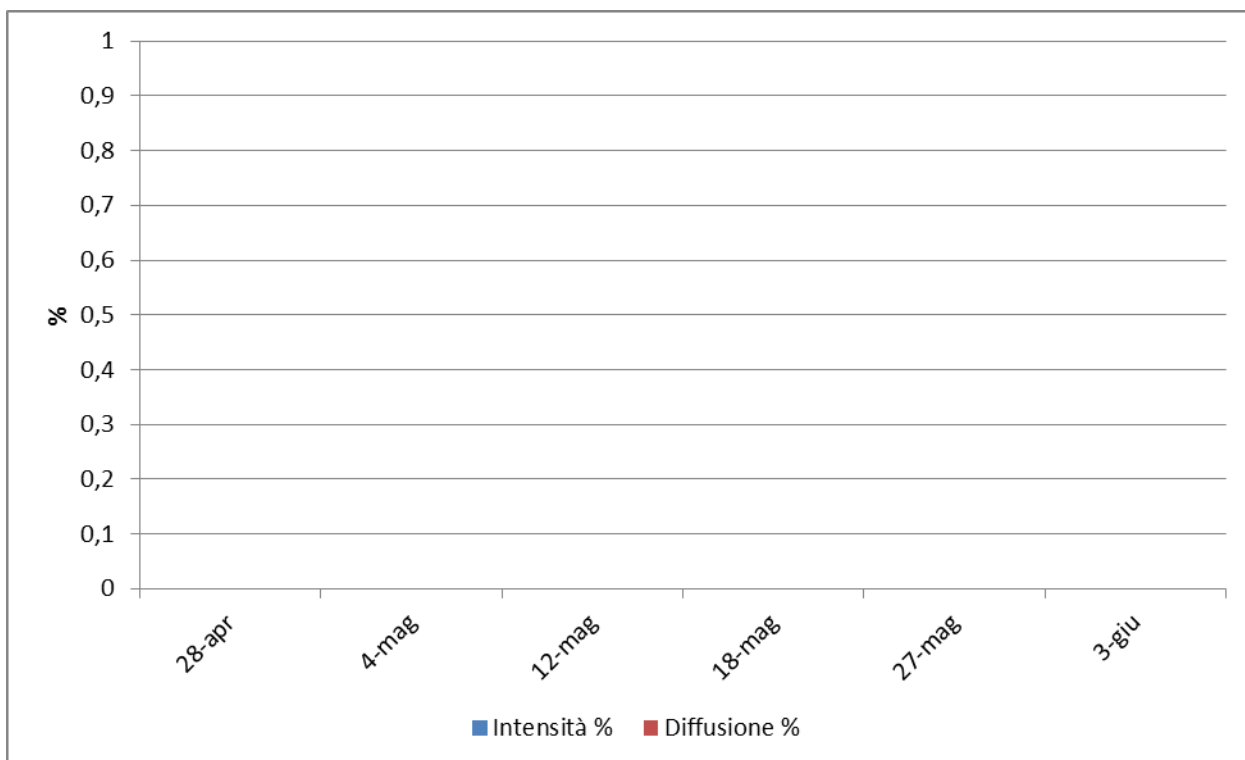


**Foglia**

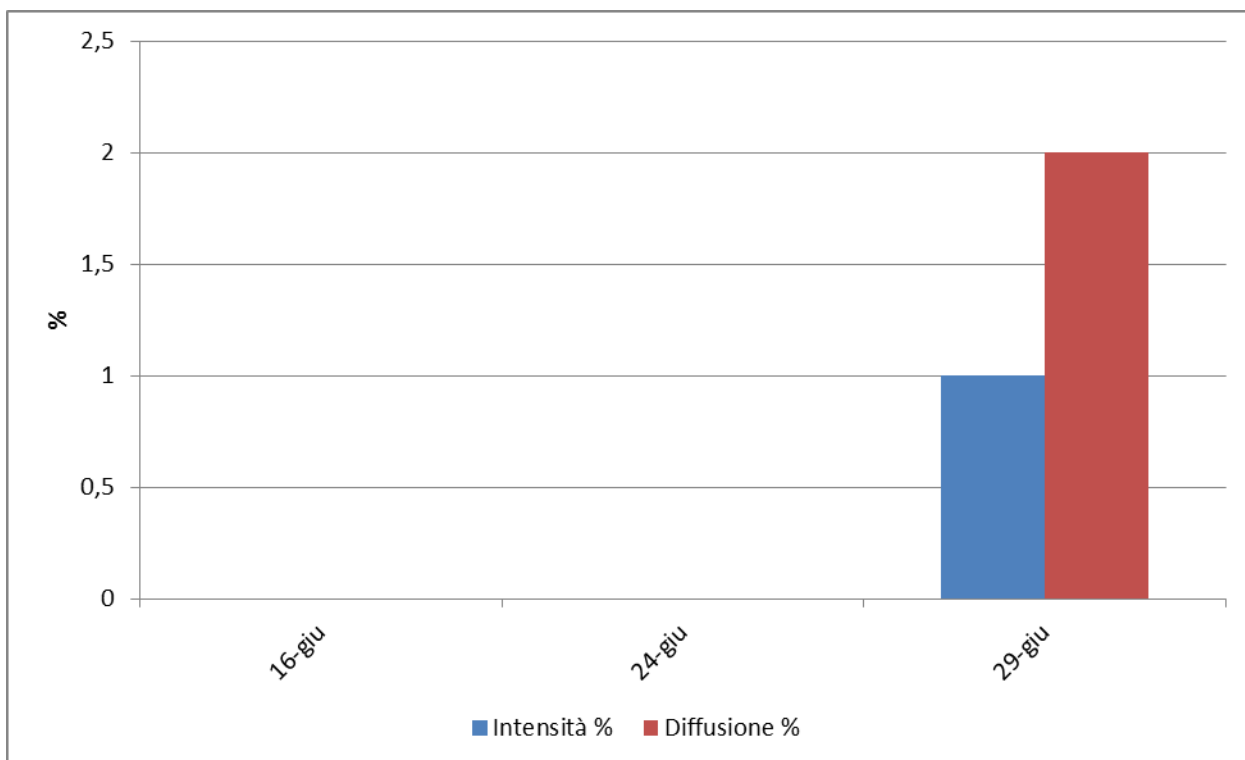


**Grappolo**

**DOC FRIULI GRAVE – Casarsa della Delizia (PN) – Merlot.**

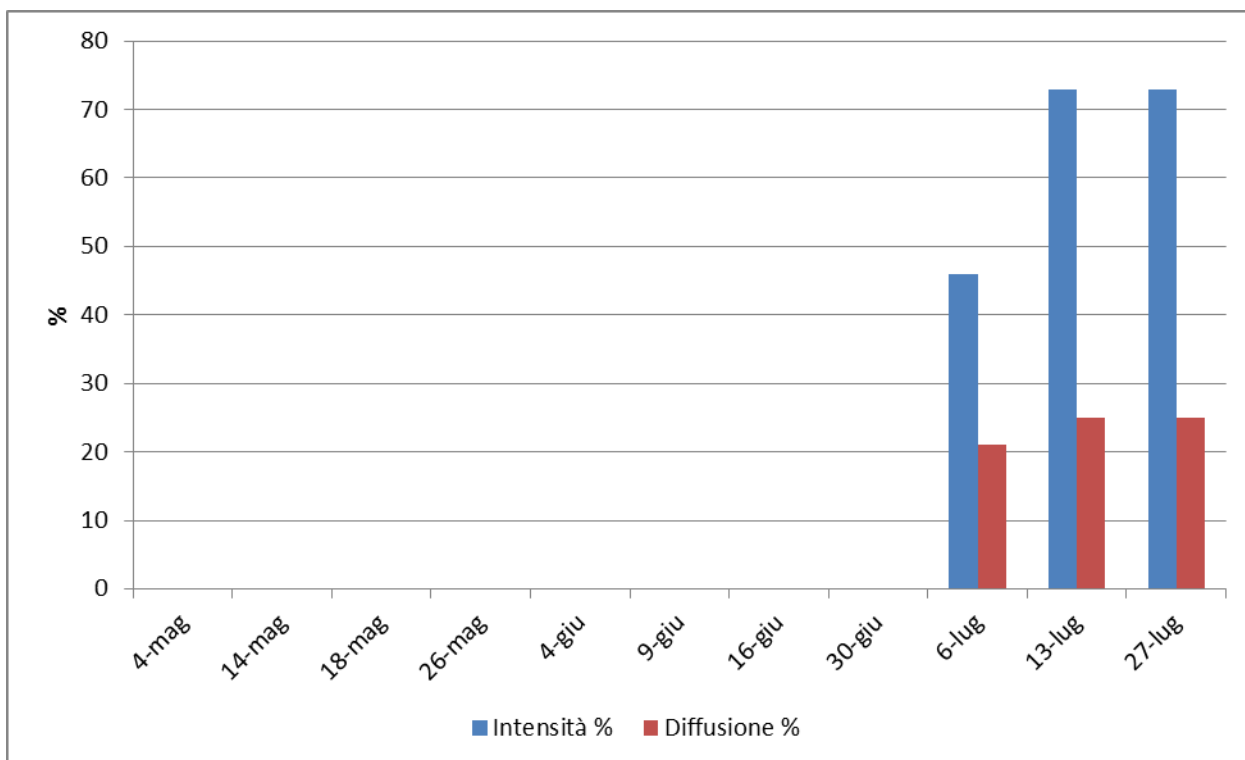


**Folia**

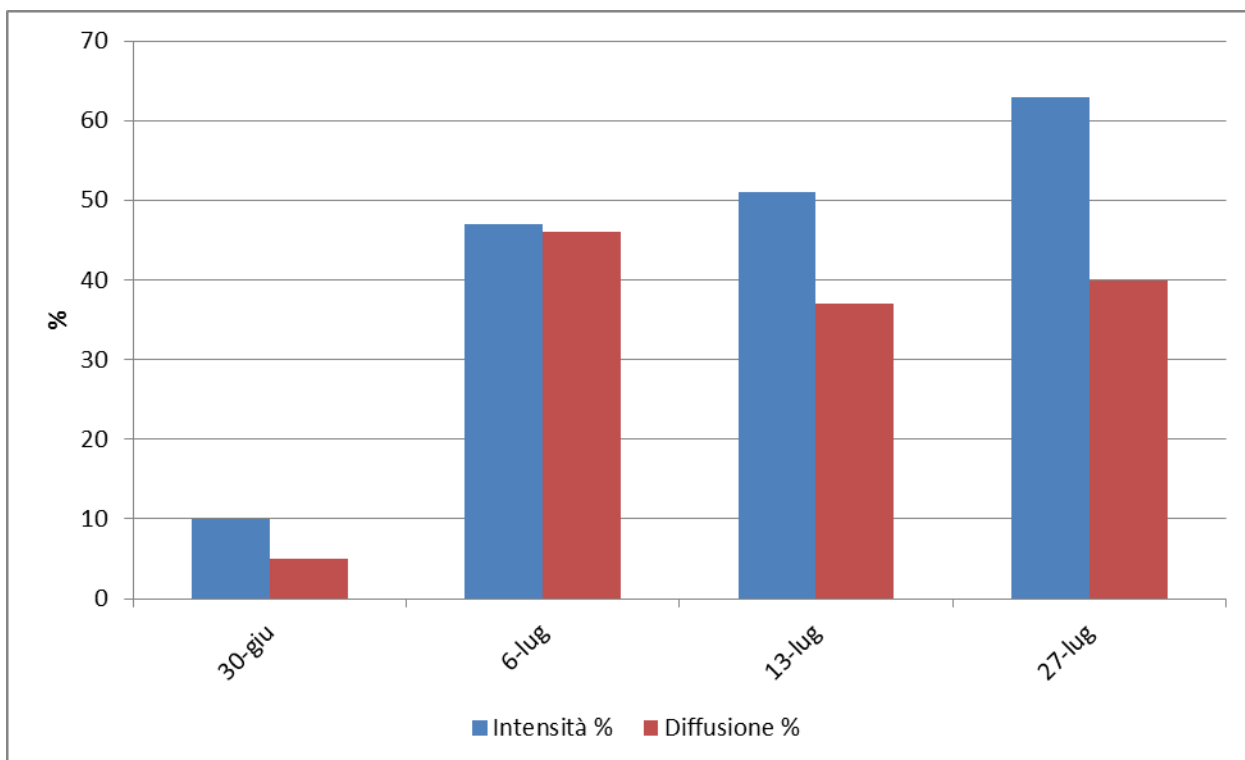


**Grappolo**

**DOC FRIULI GRAVE – Montereale Valcellina (PN) – Cabernet Franc.**

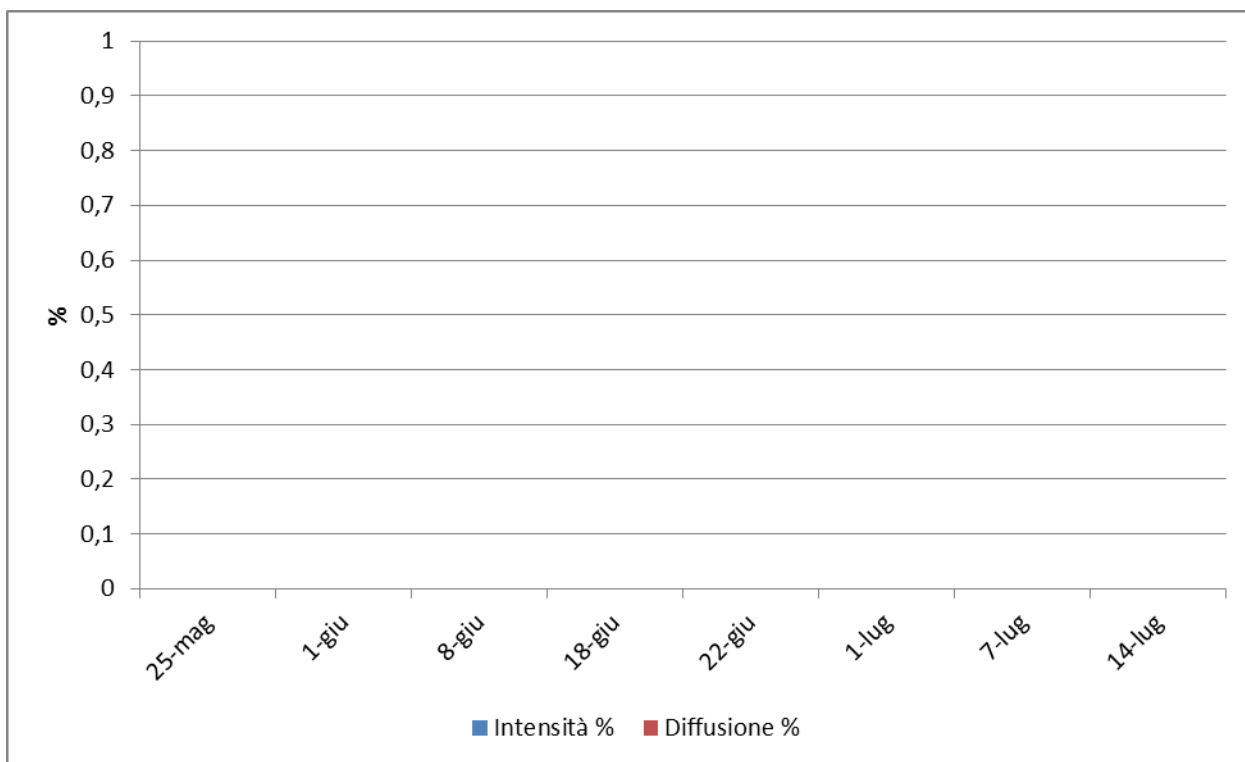


**Folia**

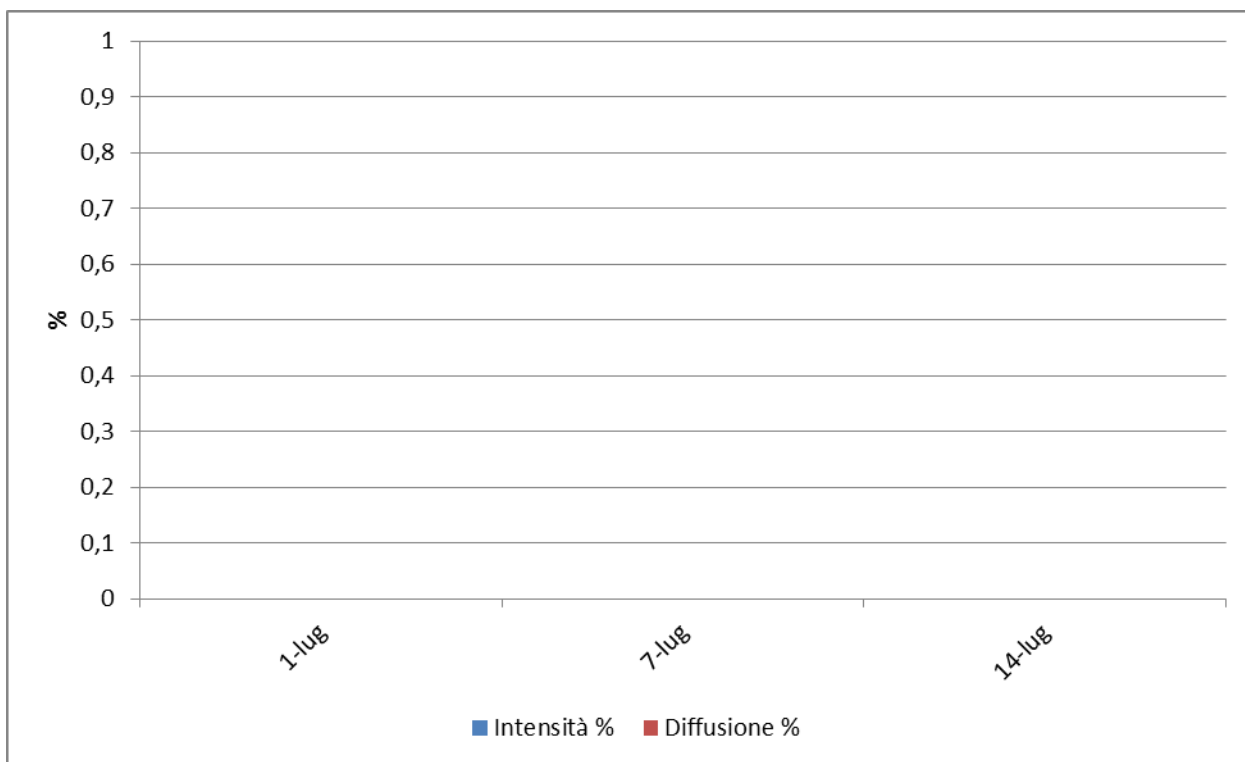


**Grappolo**

**DOC FRIULI ISONZO – San Lorenzo Isontino (GO) – Malvasia.**



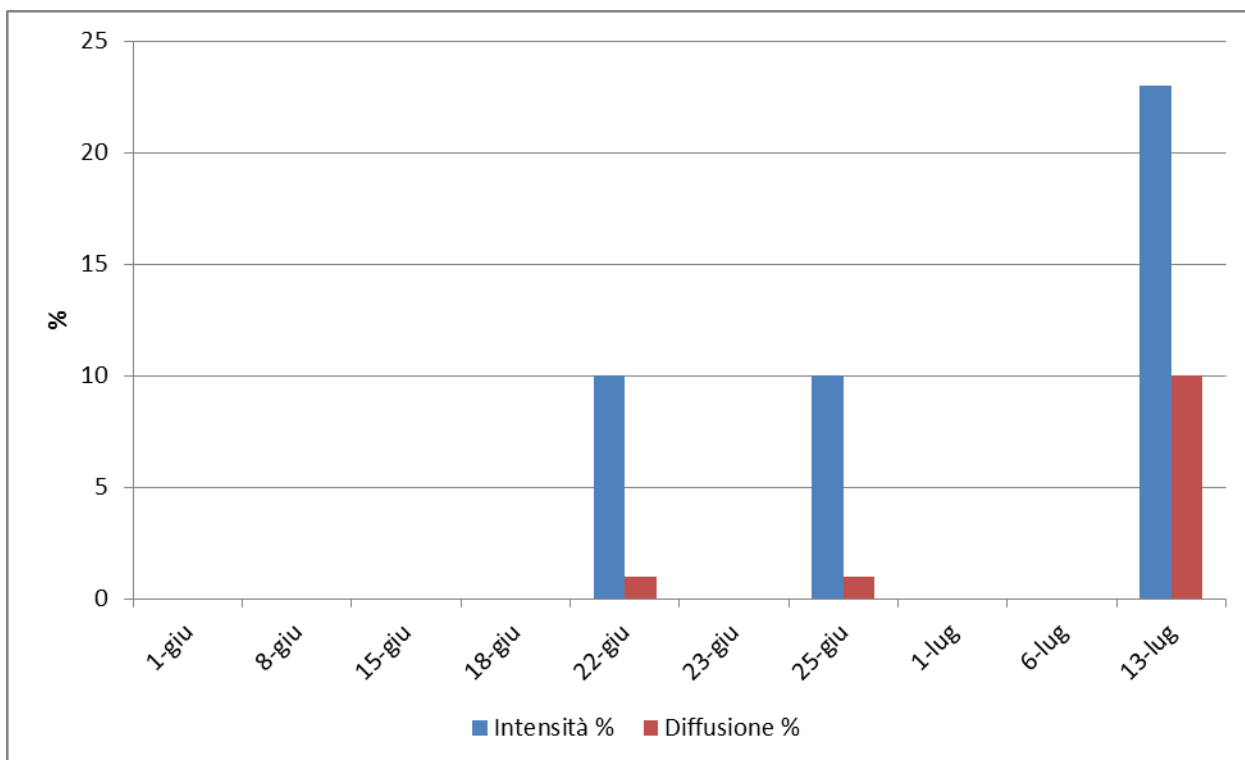
**Foglia**



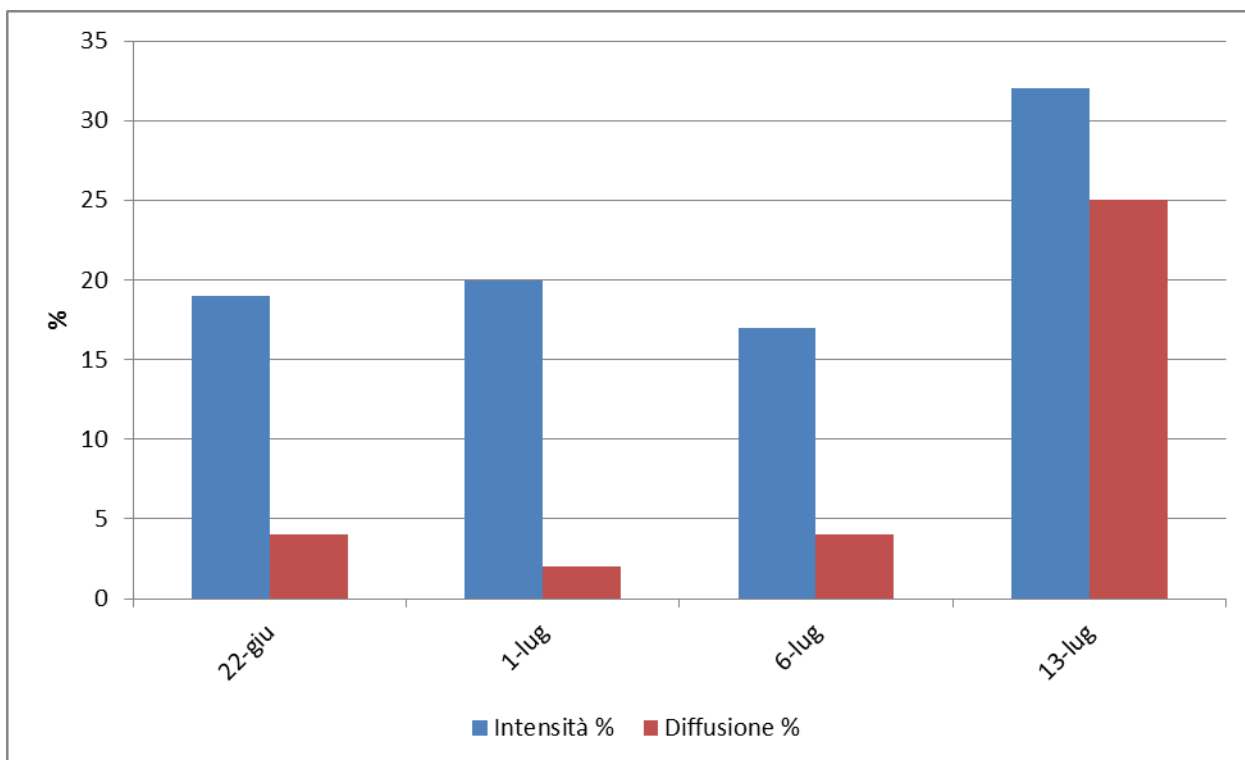
**Grappolo**



**DOC FRIULI ISONZO – Ronchi dei Legionari (GO) – Merlot.**

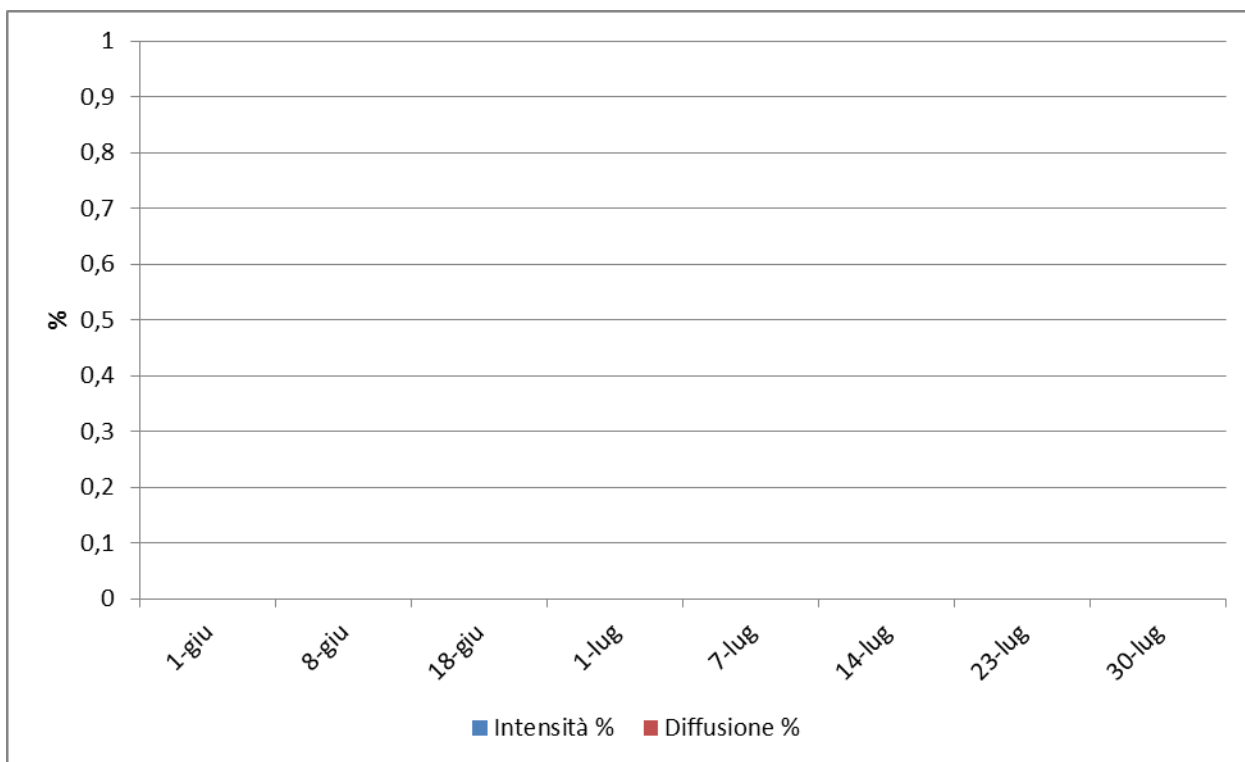


**Foglia**

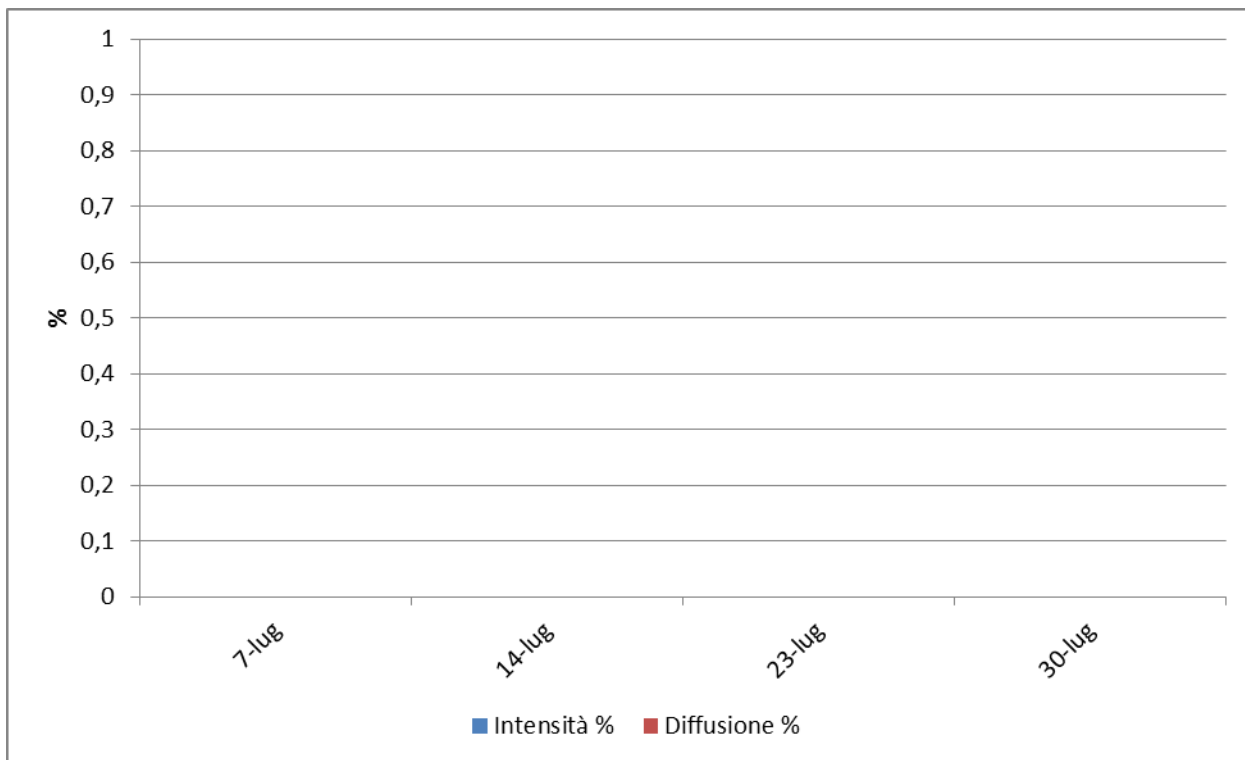


**Grappolo**

**DOC FRIULI ISONZO – Romans d’Isonzo (GO) – Pinot grigio.**

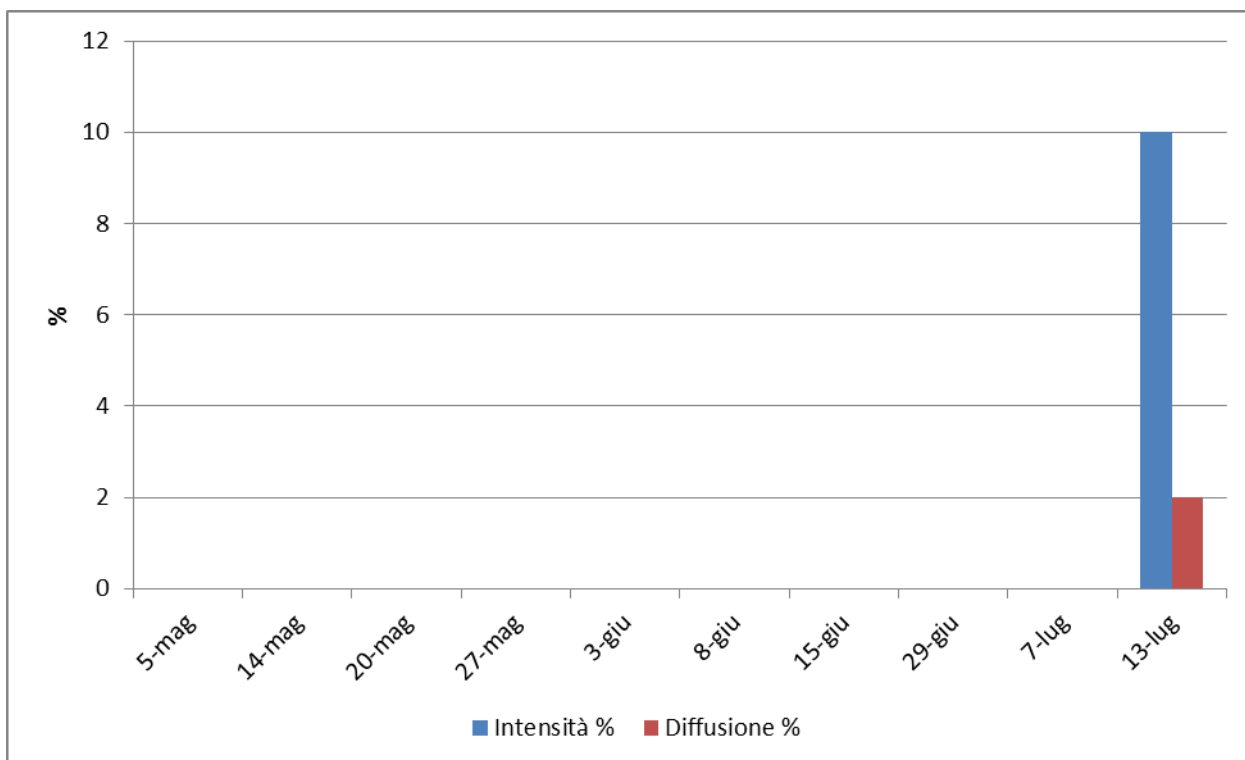


**Foglia**

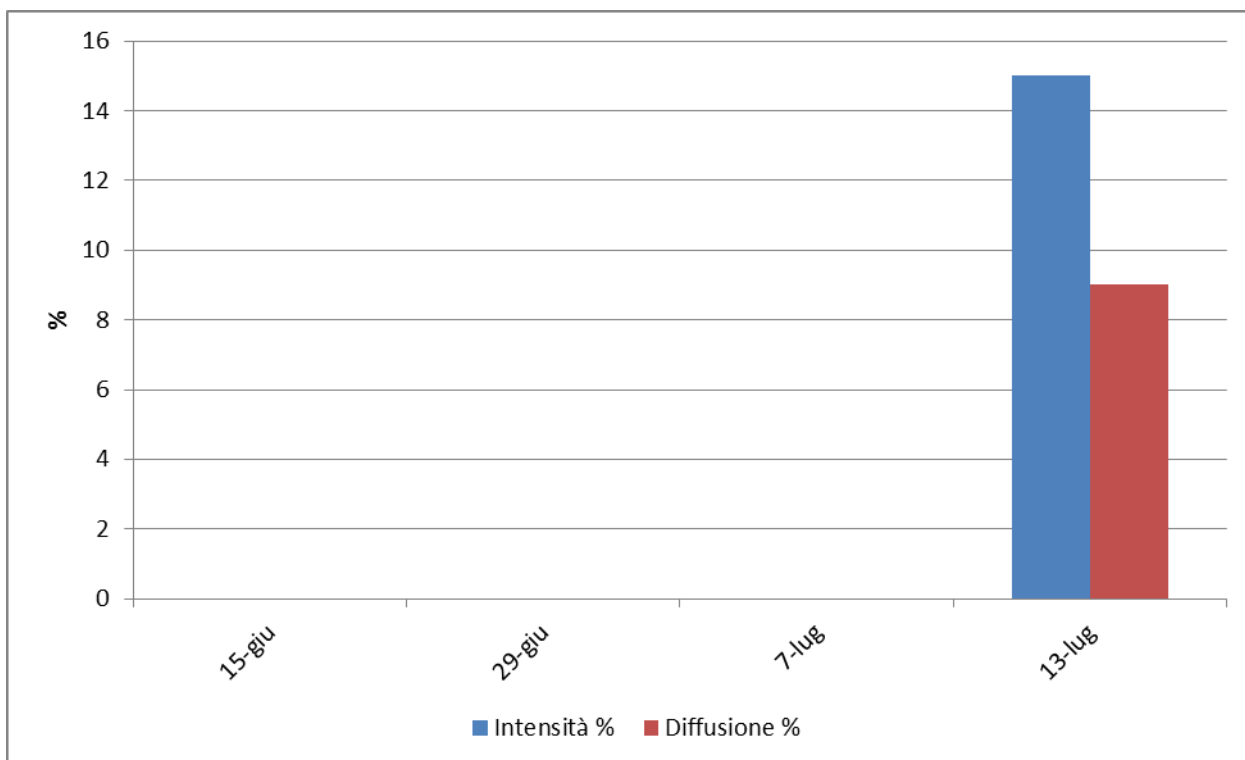


**Grappolo**

**DOC FRIULI LATISANA – Rivignano (UD) – Refosco P.R.**



**Folia**



**Grappolo**