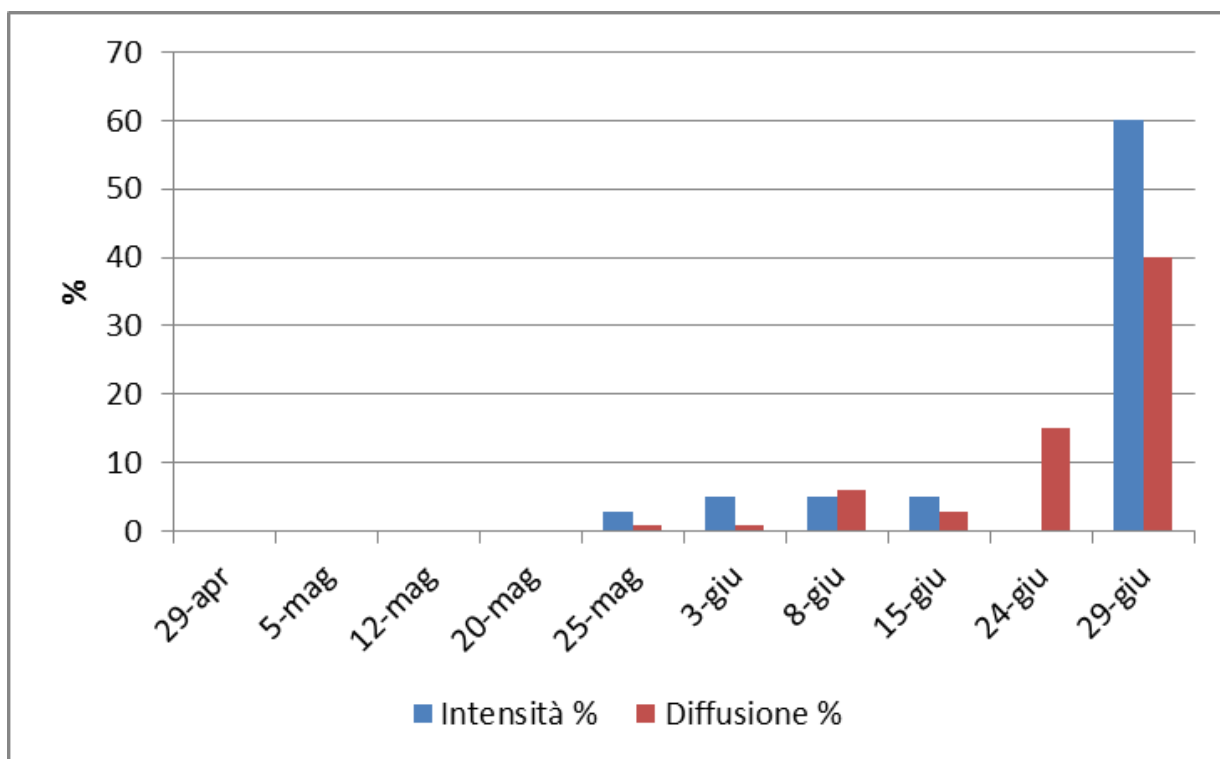
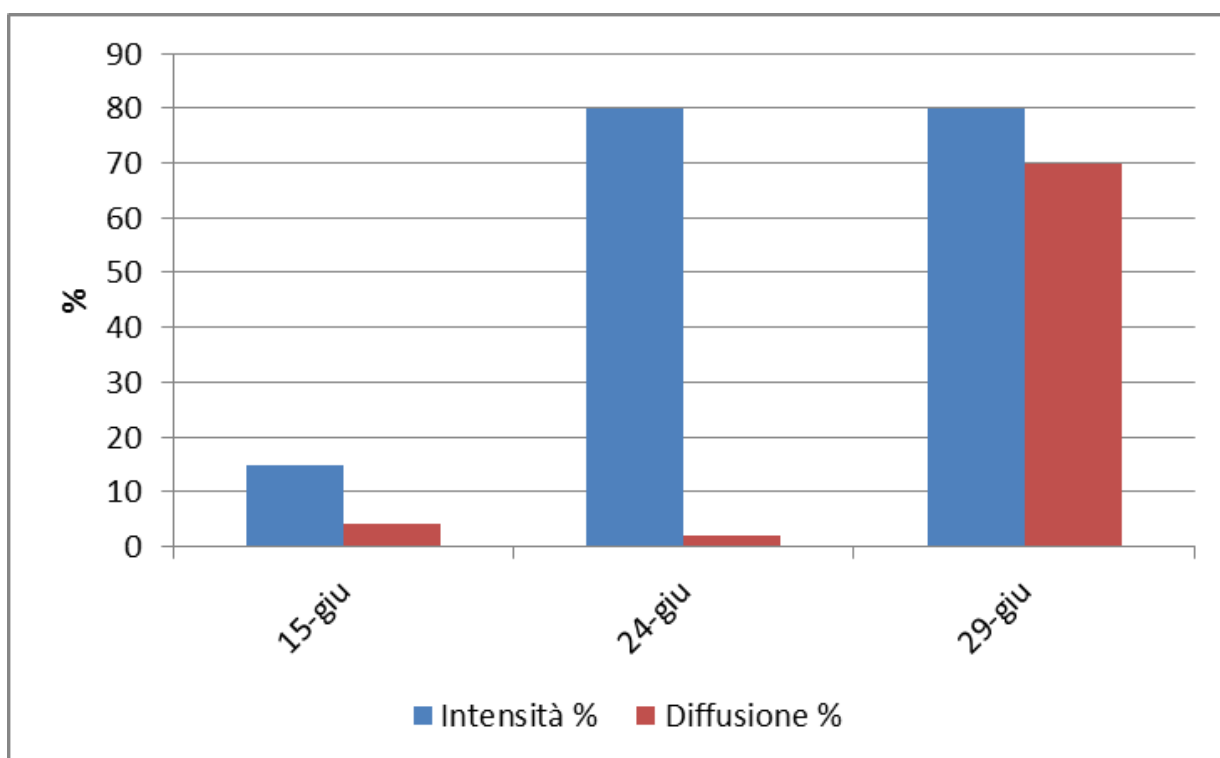


Sintomi di peronospora rilevati su foglia e grappolo in 19 vigneti distribuiti sul territorio regionale - 2015.

DOC FRIULI ANNIA – Castions di Strada (UD) – Merlot, sintomi su foglia e grappolo.

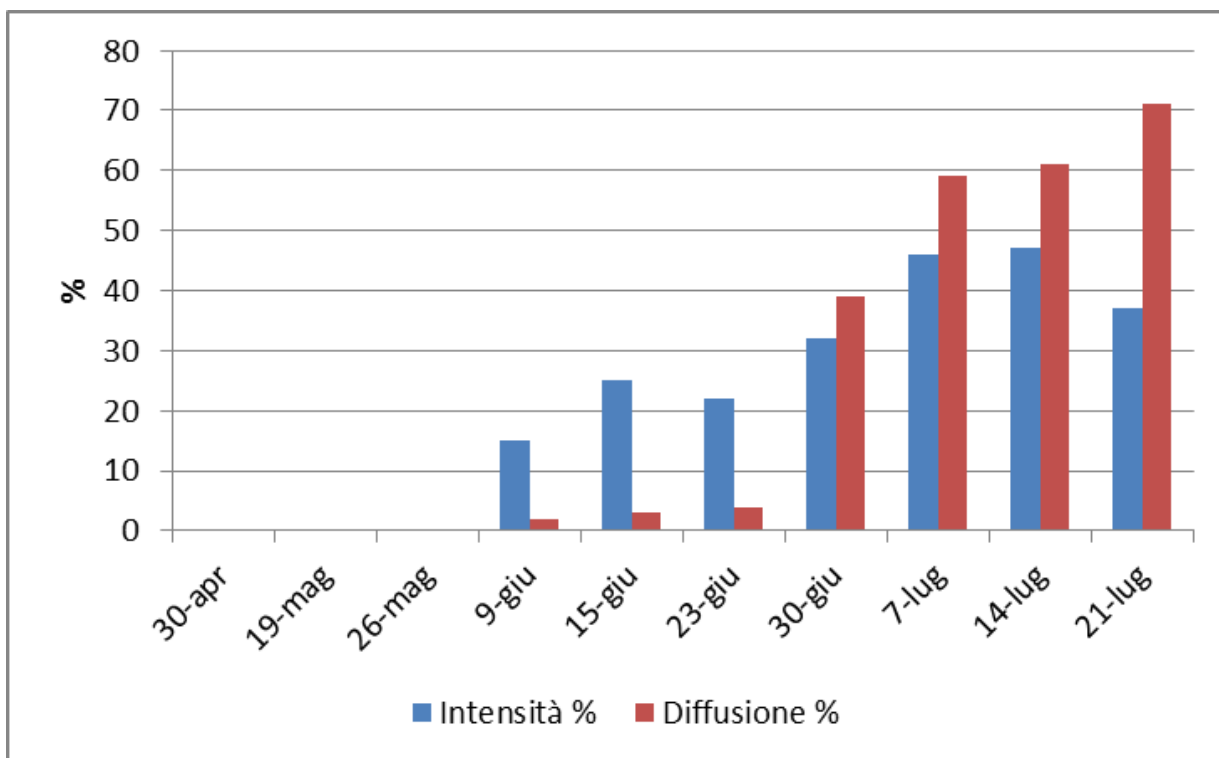


Foglia

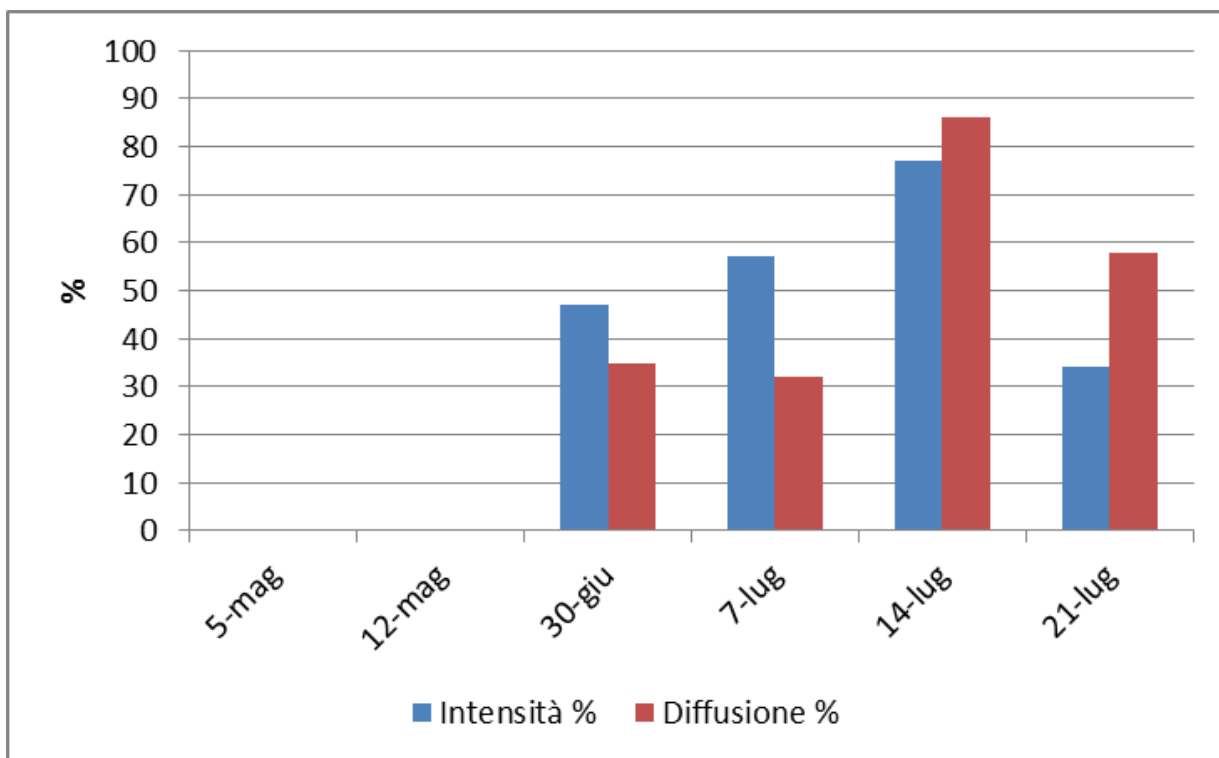


Grappolo

DOC FRIULI AQUILEIA – Ruda (UD) – Merlot, sintomi su foglia e grappolo.

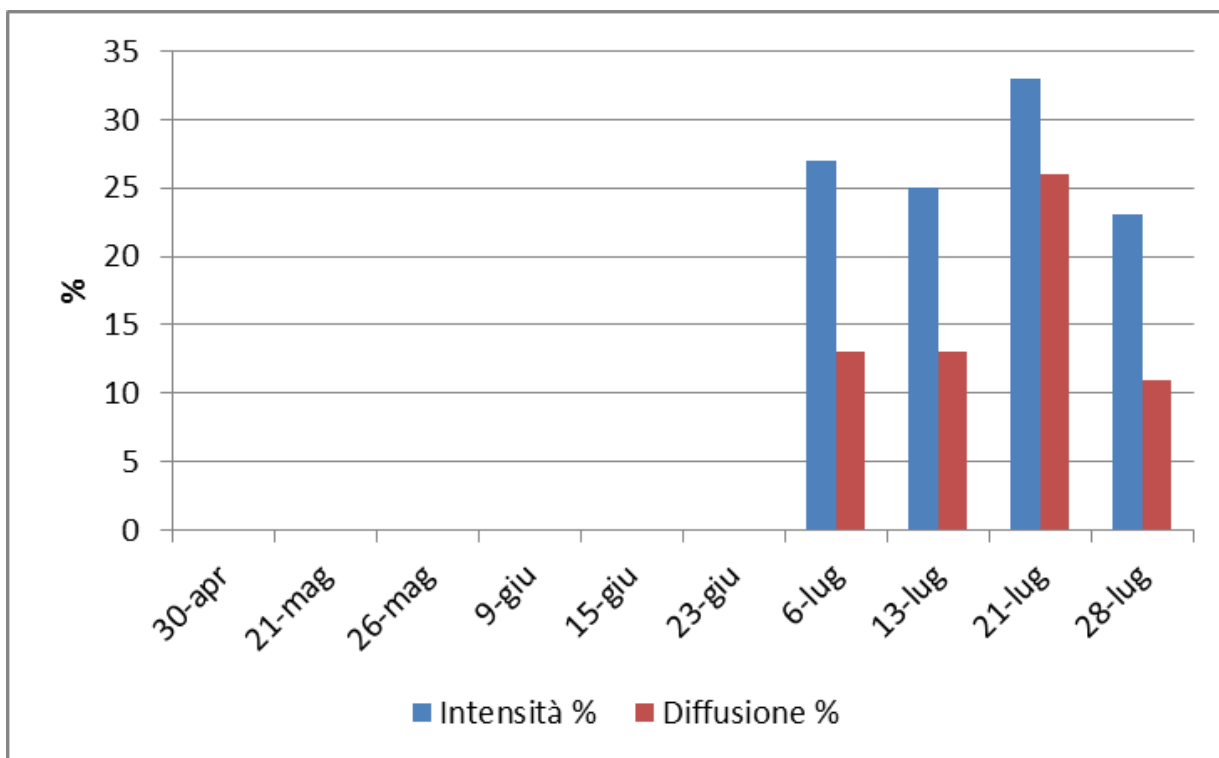


Foglia

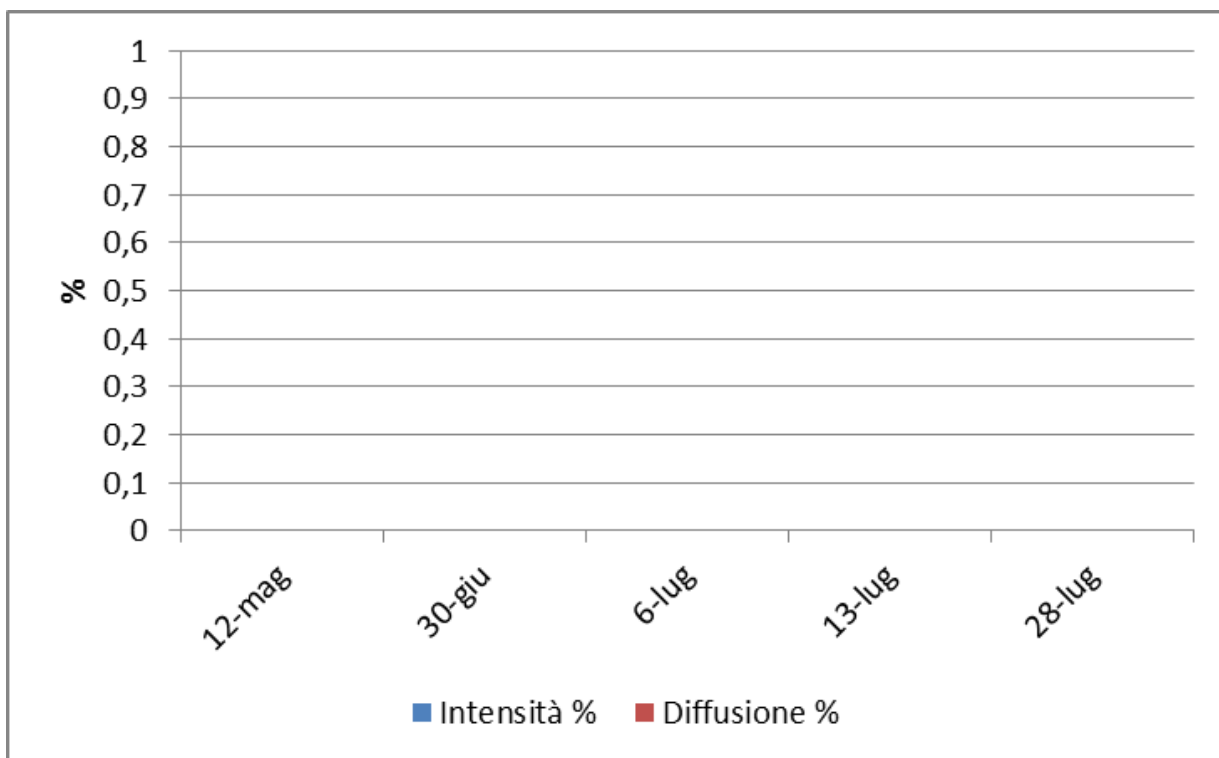


Grappolo

DOC FRIULI AQUILEIA – Fiumicello (UD) – Merlot, sintomi su foglia e grappolo.

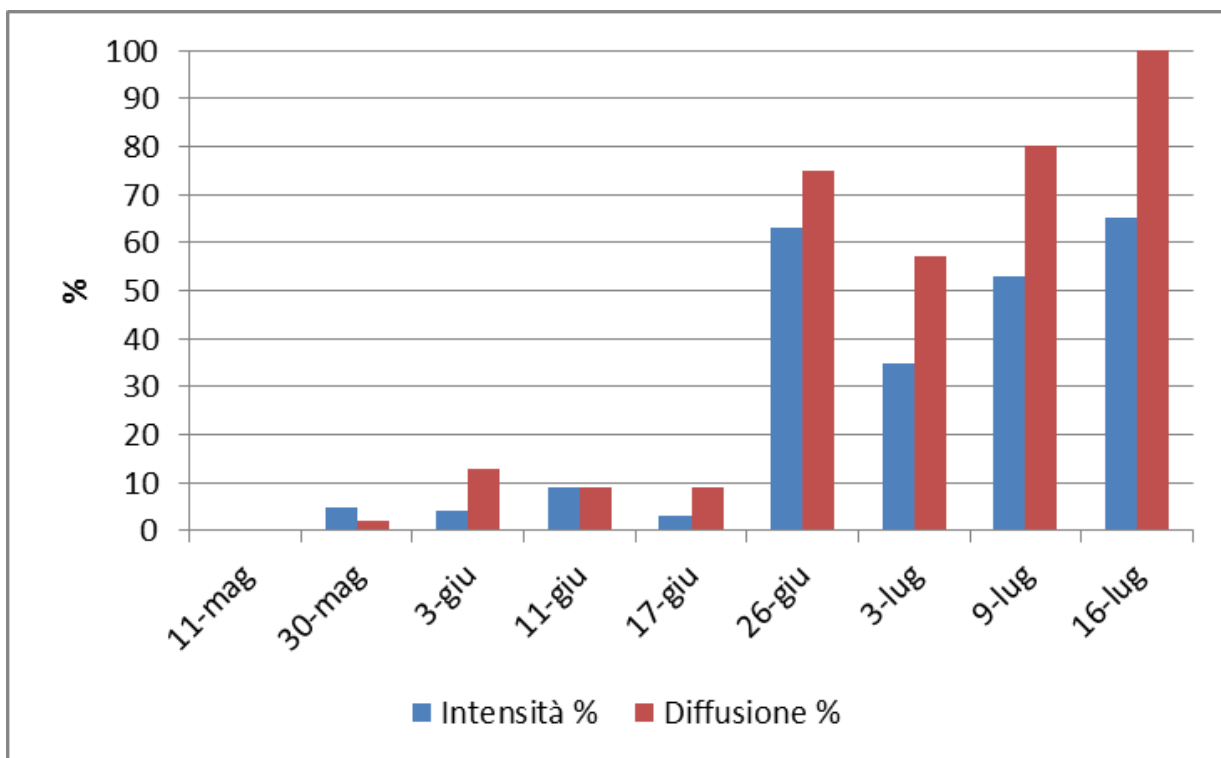


Foglia

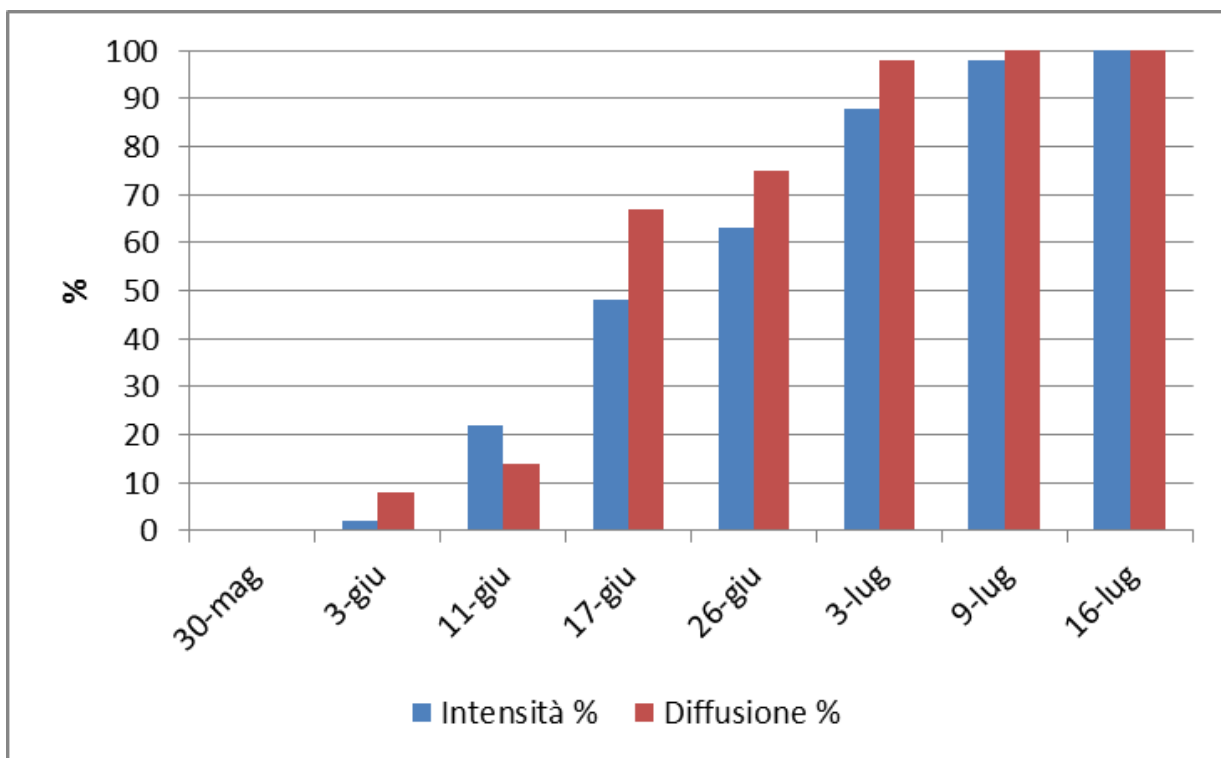


Grappolo

DOC COLLIO – Cormons (GO) – Merlot, sintomi su foglia e grappolo.

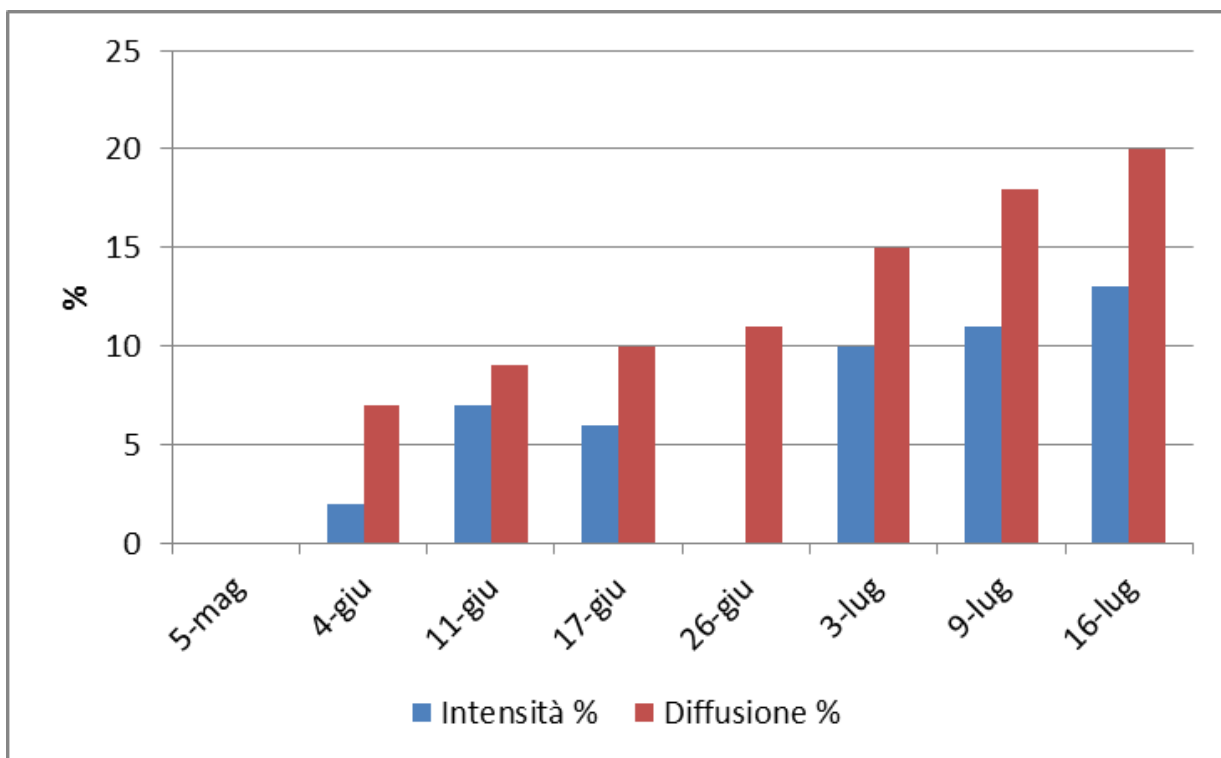


Foglia

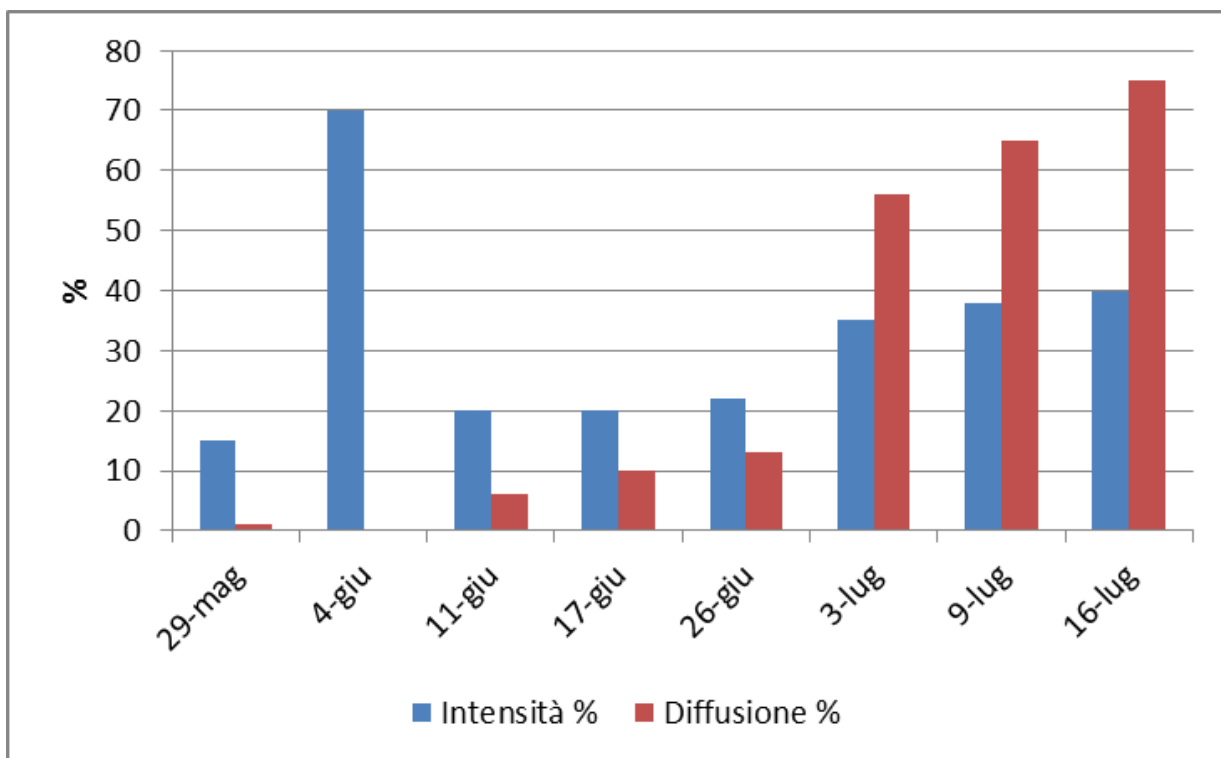


Grappolo

DOC COLLIO – Capriva del Friuli (GO) – Merlot, sintomi su foglia e grappolo.

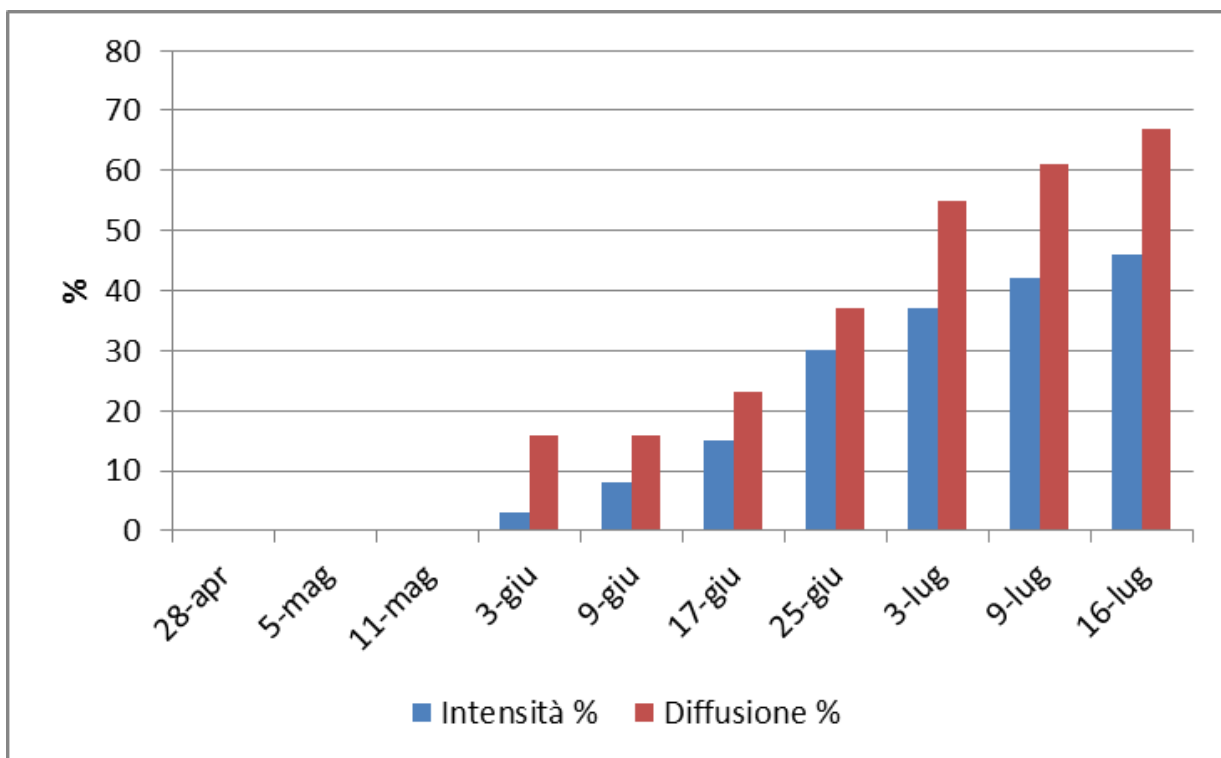


Foglia

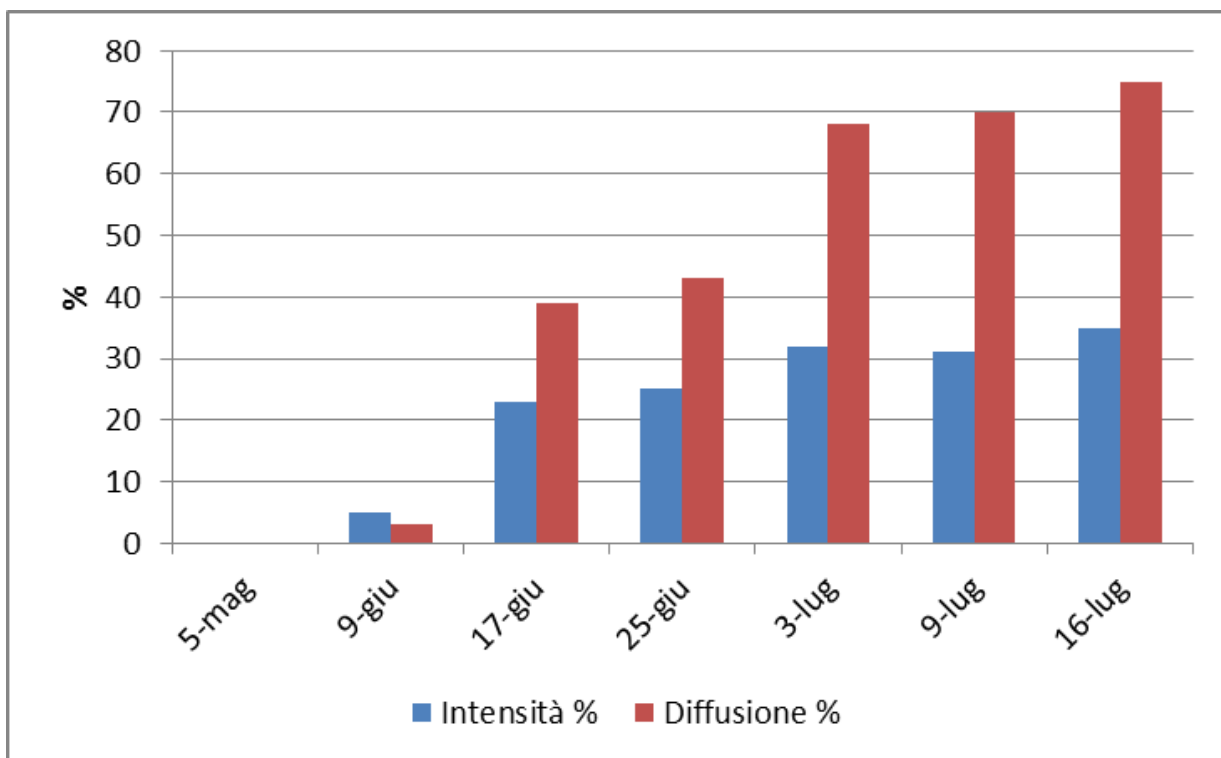


Grappolo

DOC COLLIO – Dolegna del Collio (GO) – Pinot grigio, sintomi su foglia e grappolo.

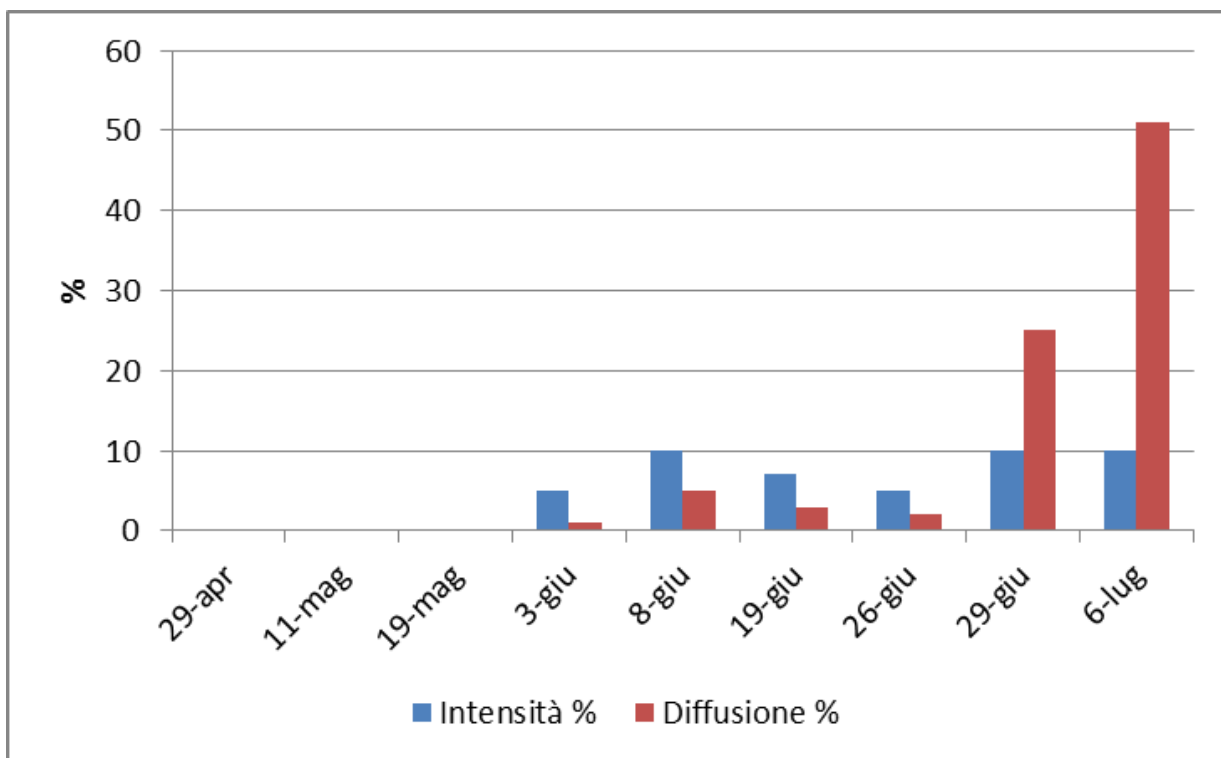


Foglia

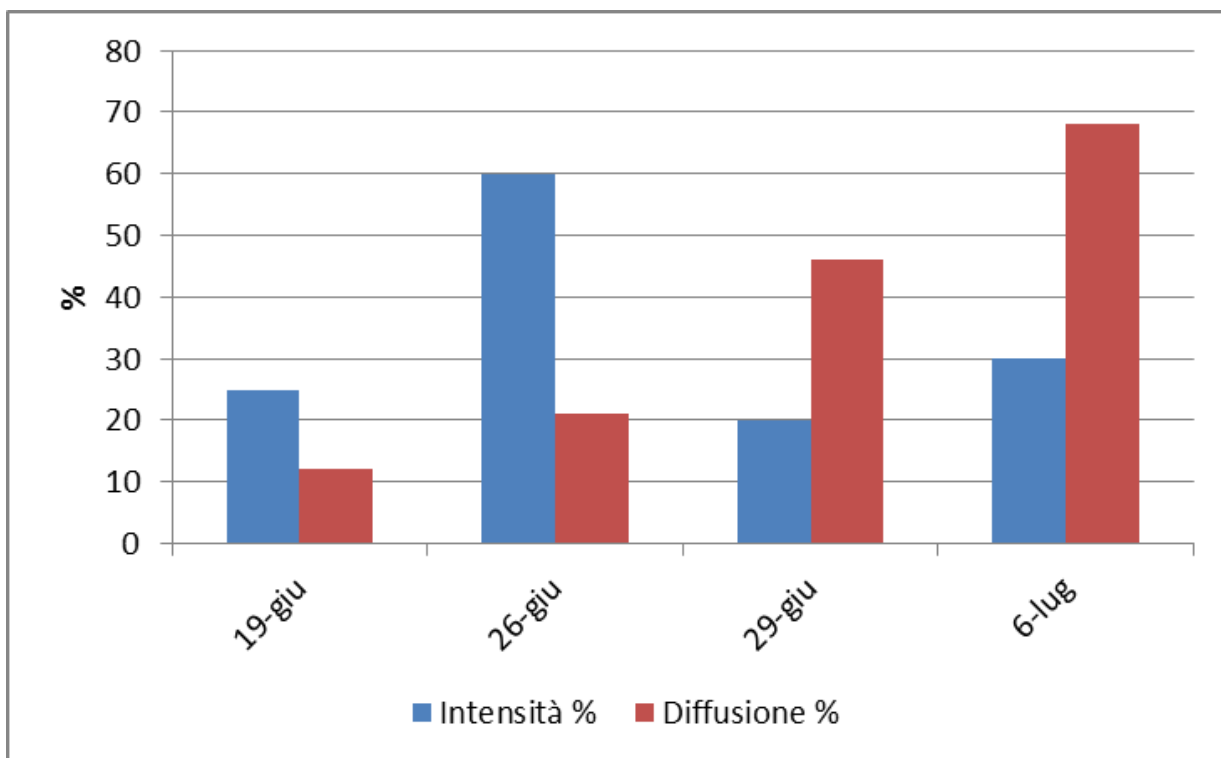


Grappolo

FRIULI COLLI ORIENTALI – Corno di Rosazzo (UD) – Merlot, sintomi su foglia e grappolo.

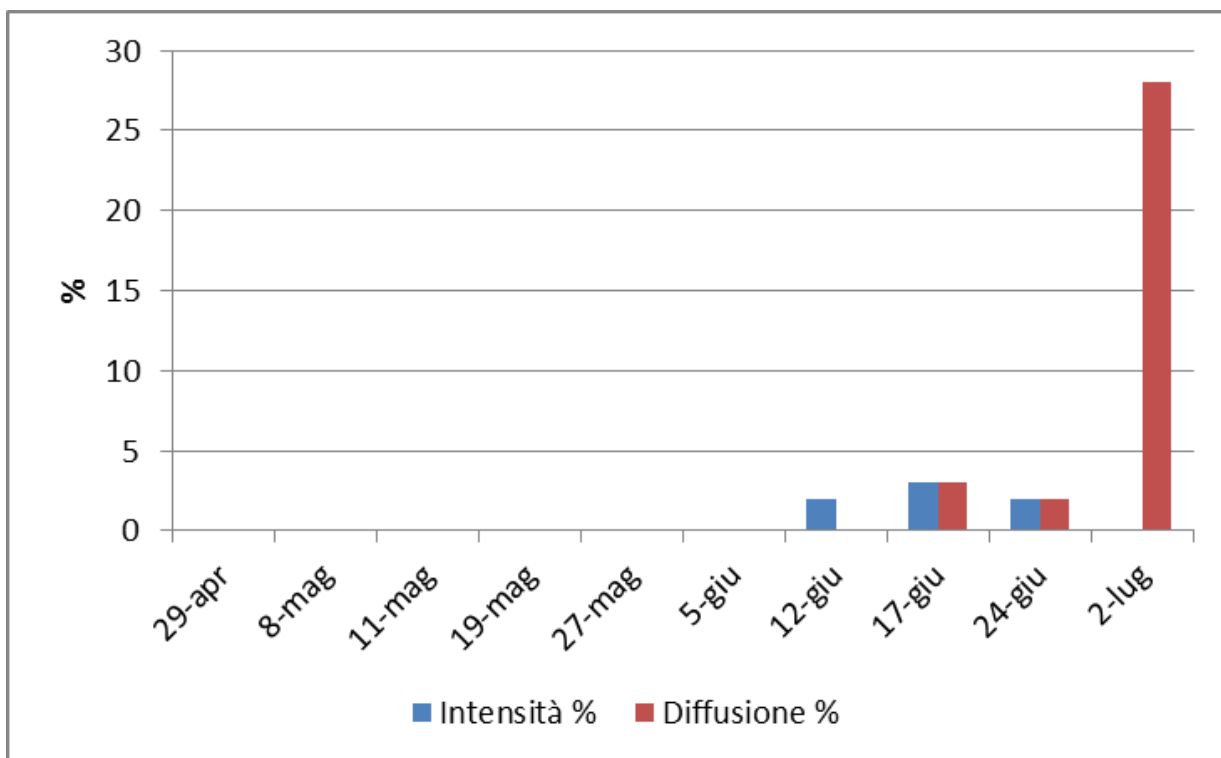


Foglia

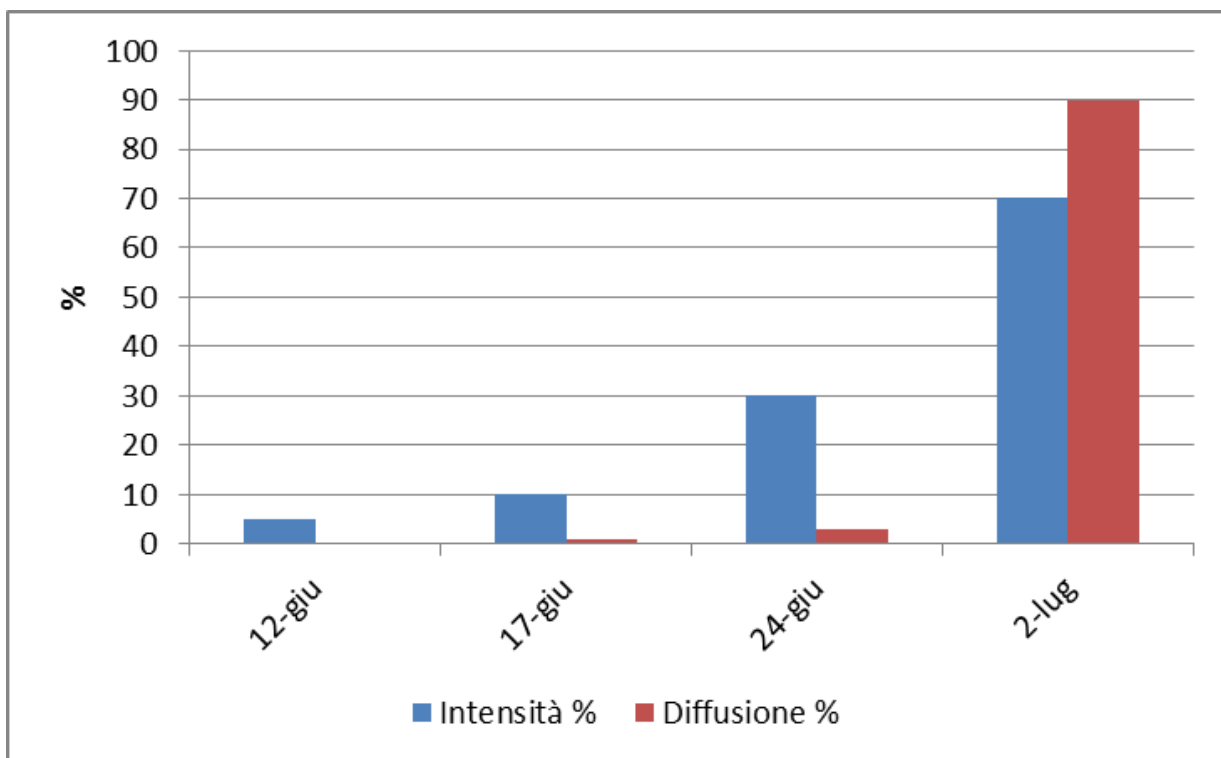


Grappolo

FRIULI COLLI ORIENTALI – Cividale (UD) – Cabernet Sauvignon, sintomi su foglia e grappolo.

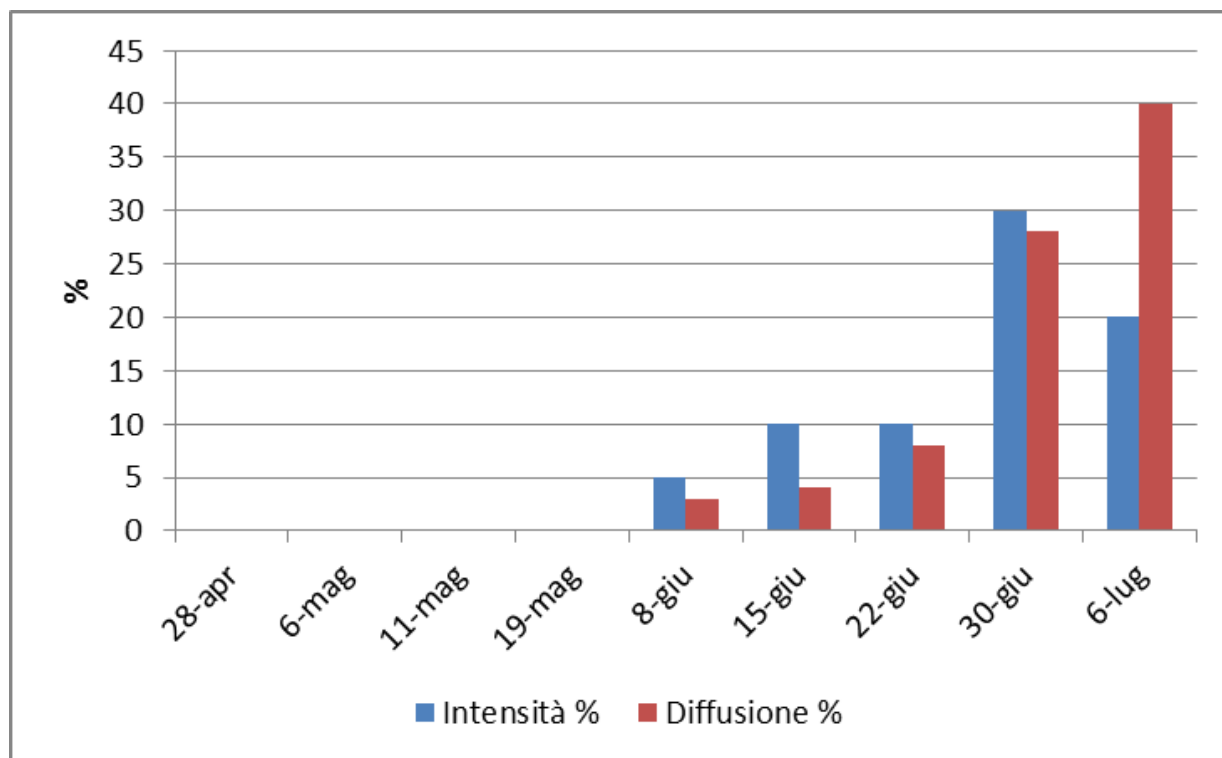


Foglia

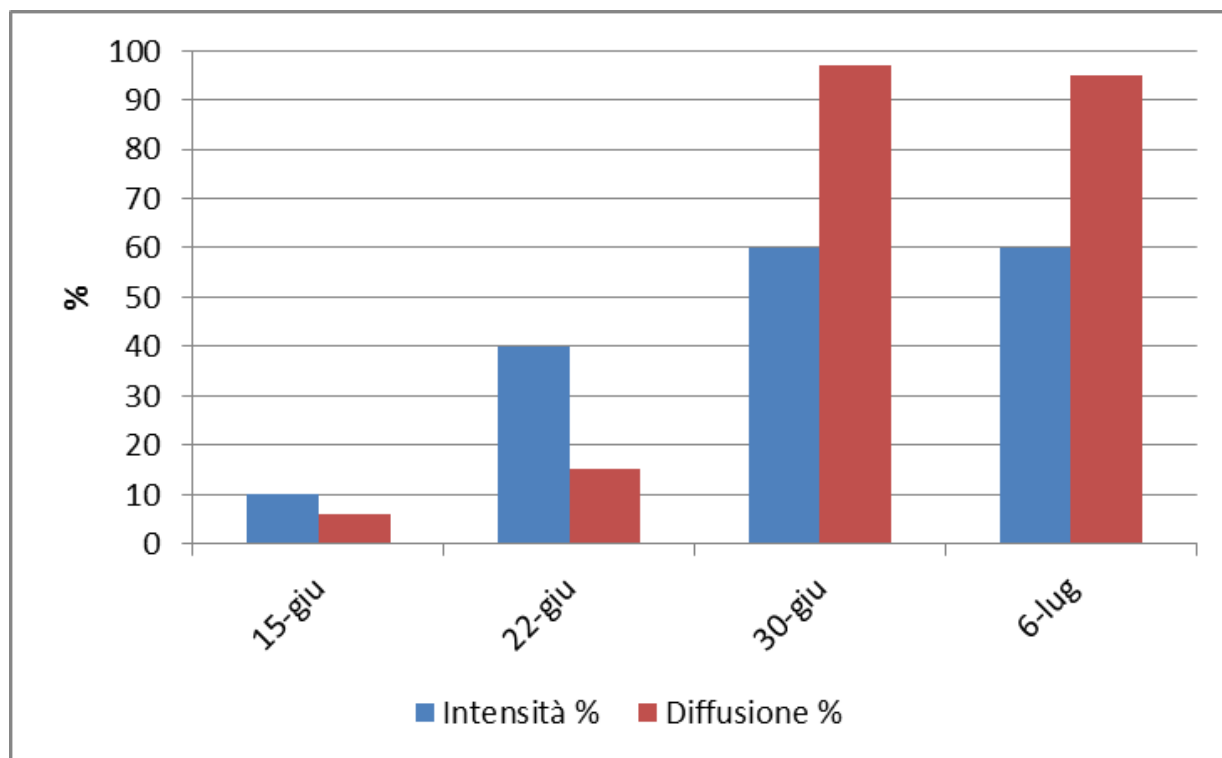


Grappolo

FRIULI COLLI ORIENTALI – Faedis (UD) – Merlot, sintomi su foglia e grappolo.

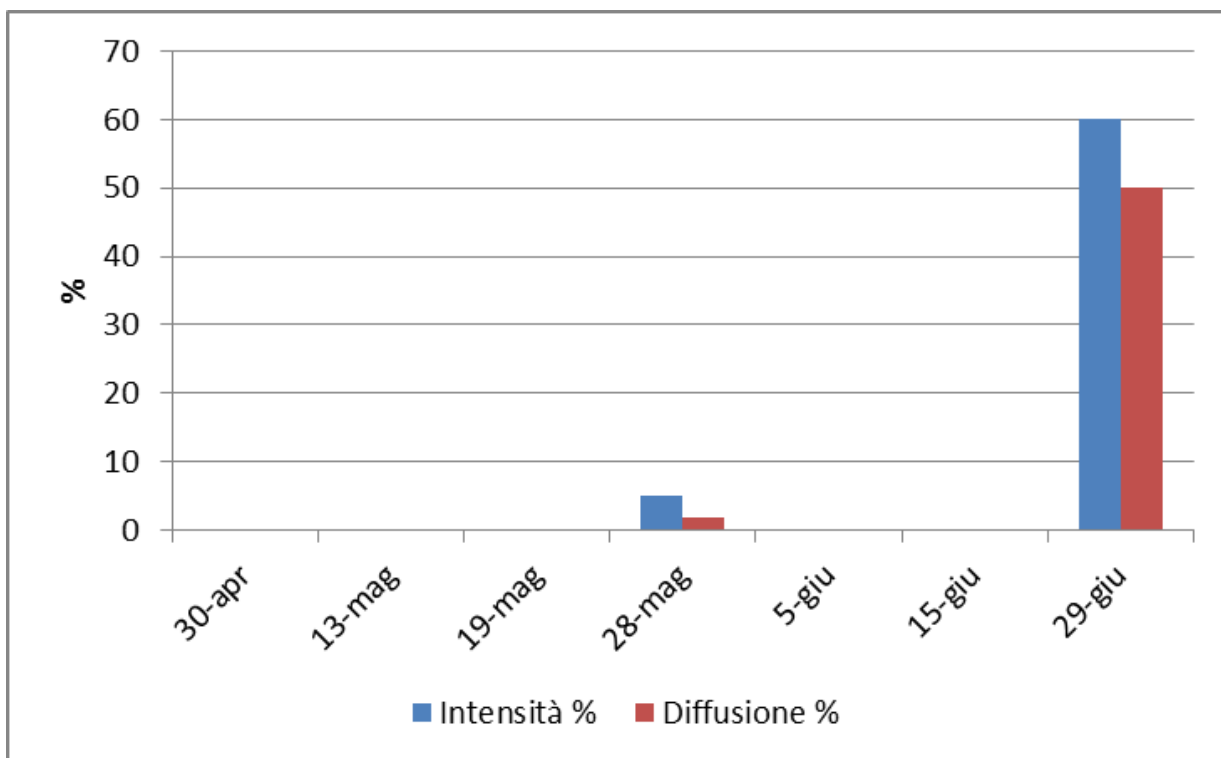


Foglia

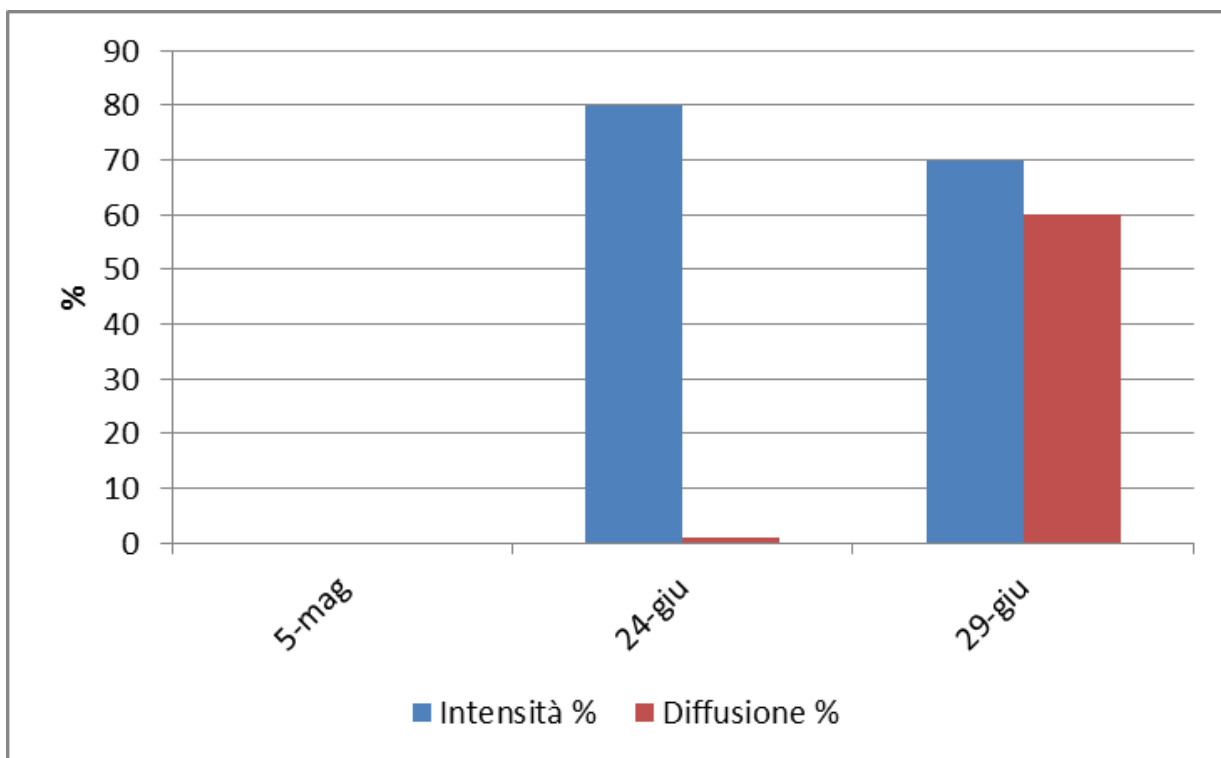


Grappolo

DOC FRIULI GRAVE – Mortegliano (UD) – Pinot grigio, sintomi su foglia e grappolo.

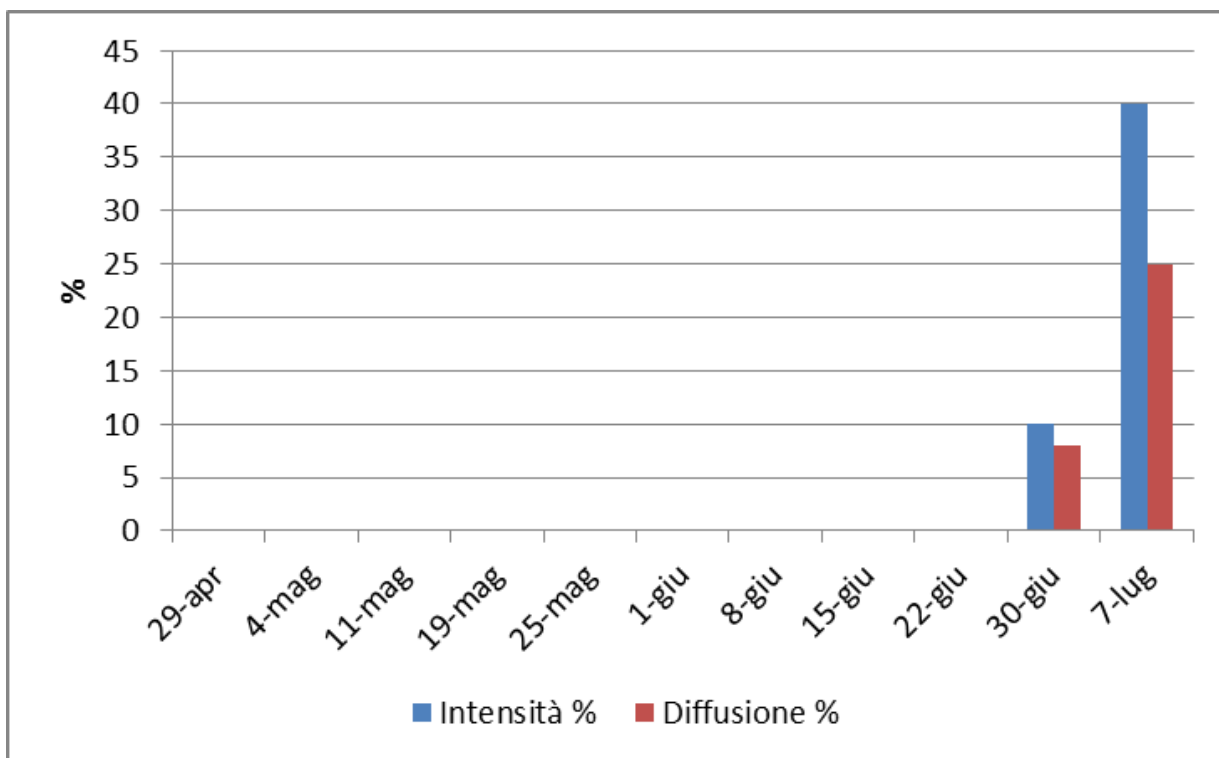


Foglia

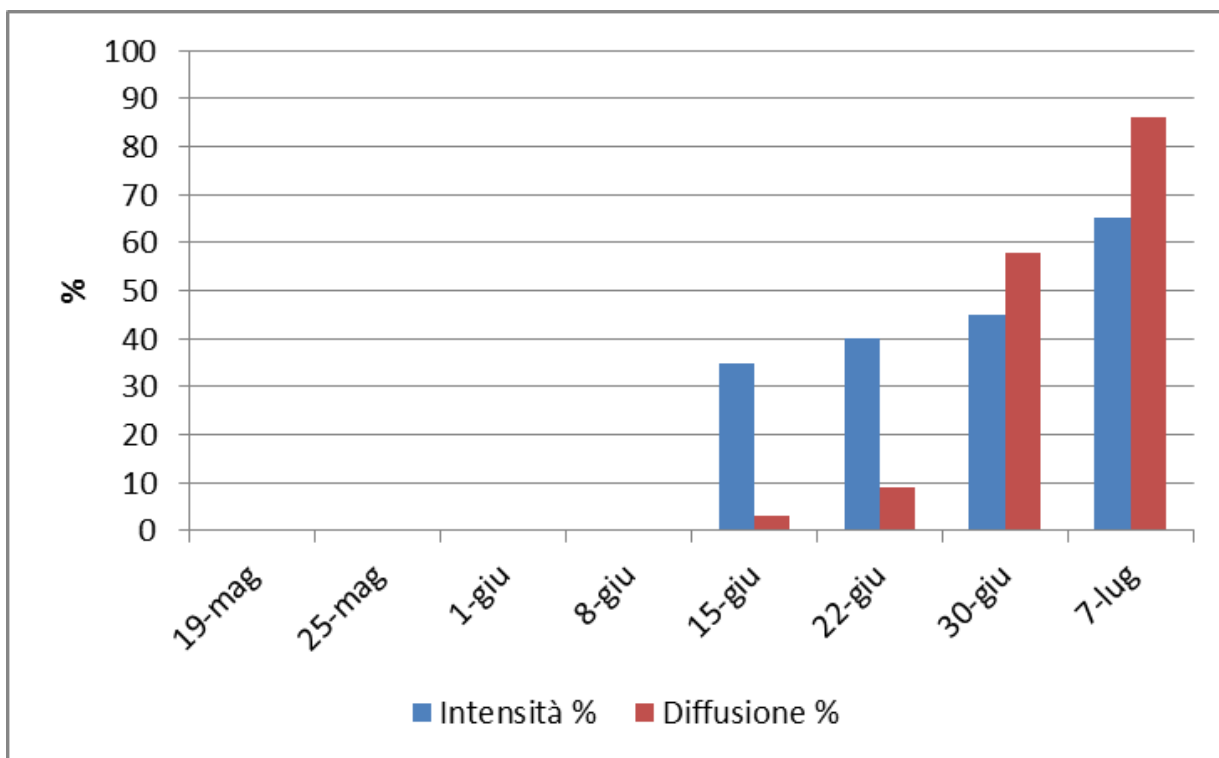


Grappolo

DOC FRIULI GRAVE – Castions di Strada (UD) – Merlot, sintomi su foglia e grappolo.

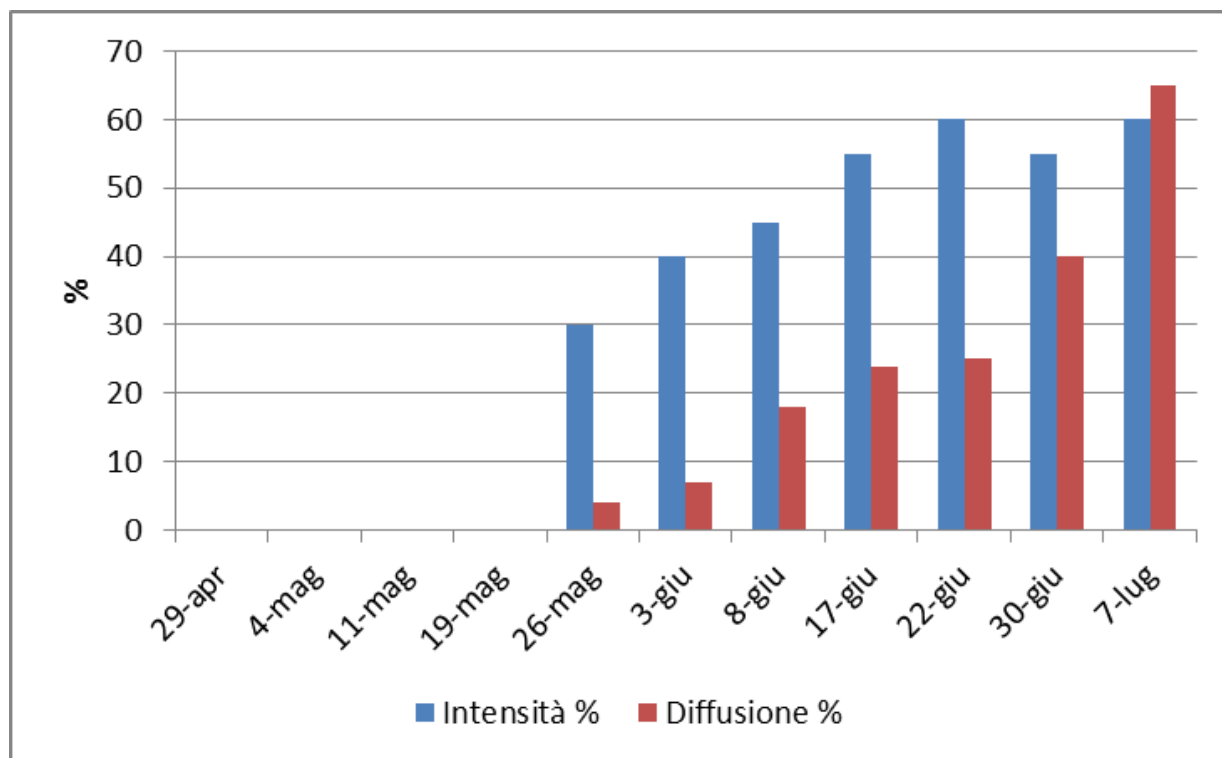


Foglia

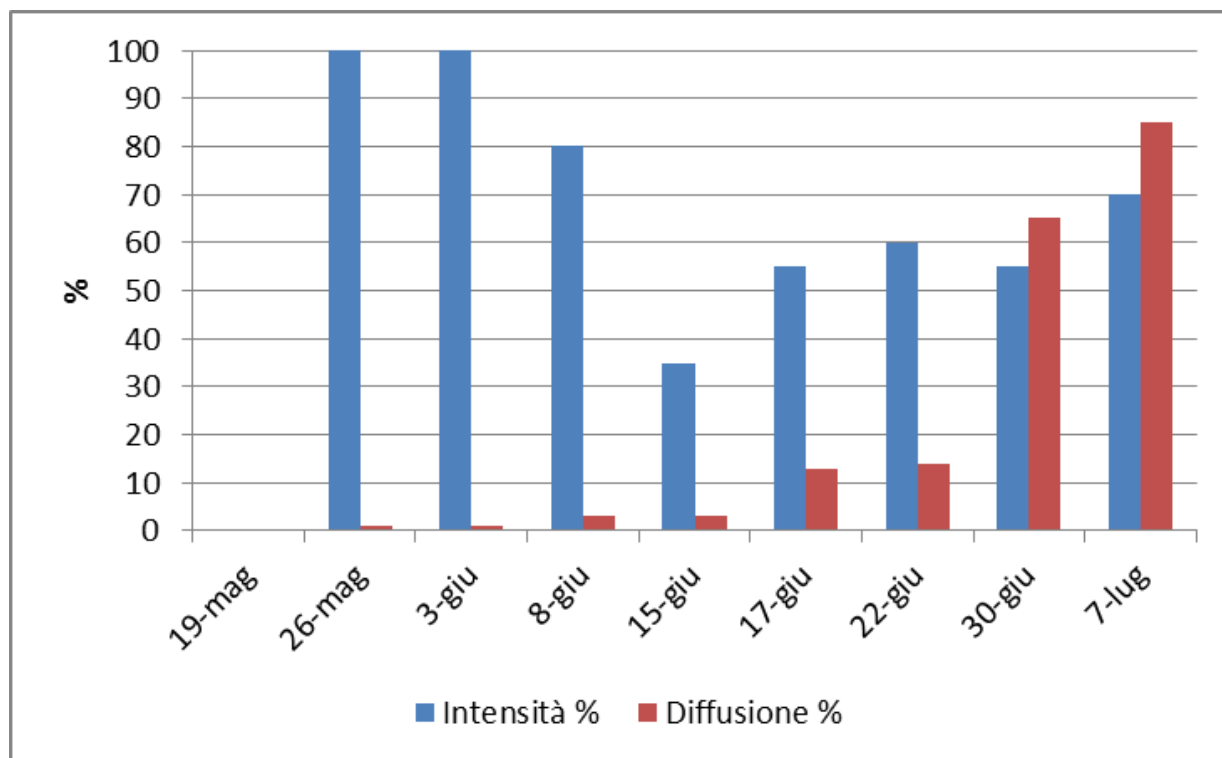


Grappolo

DOC FRIULI GRAVE – Codroipo - Beano (UD) – Pinot grigio, sintomi su foglia e grappolo.

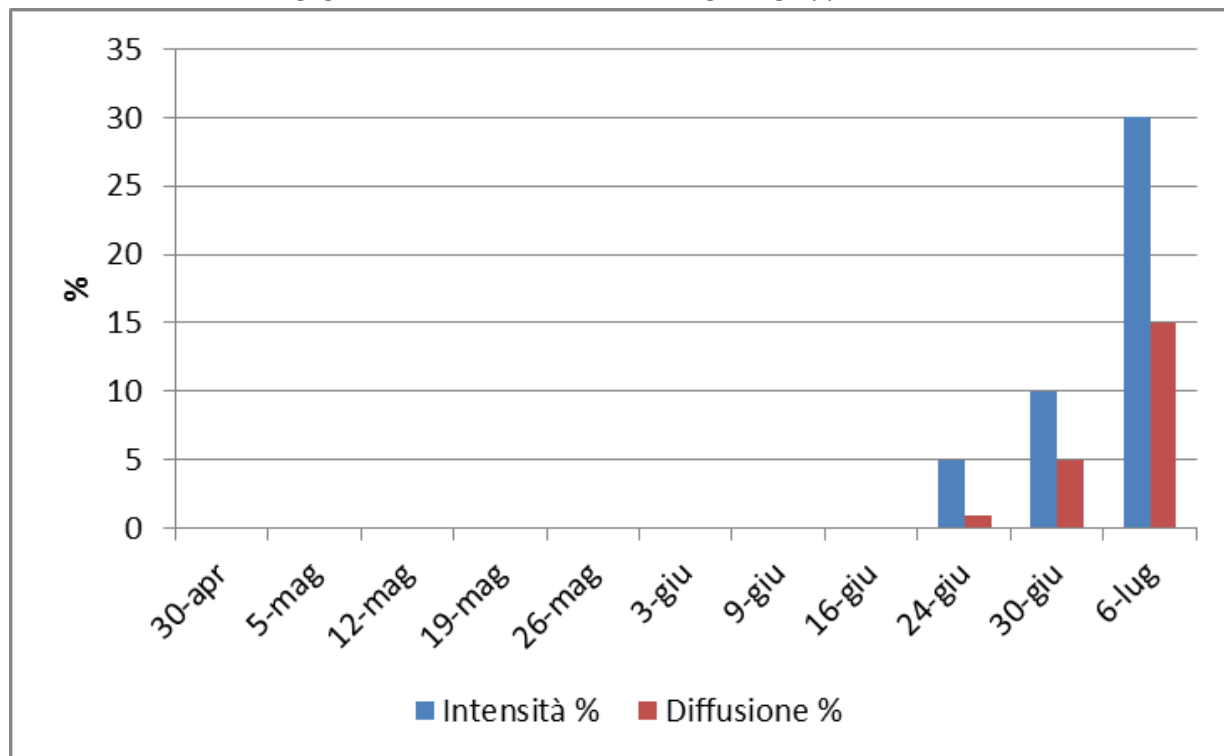


Foglia

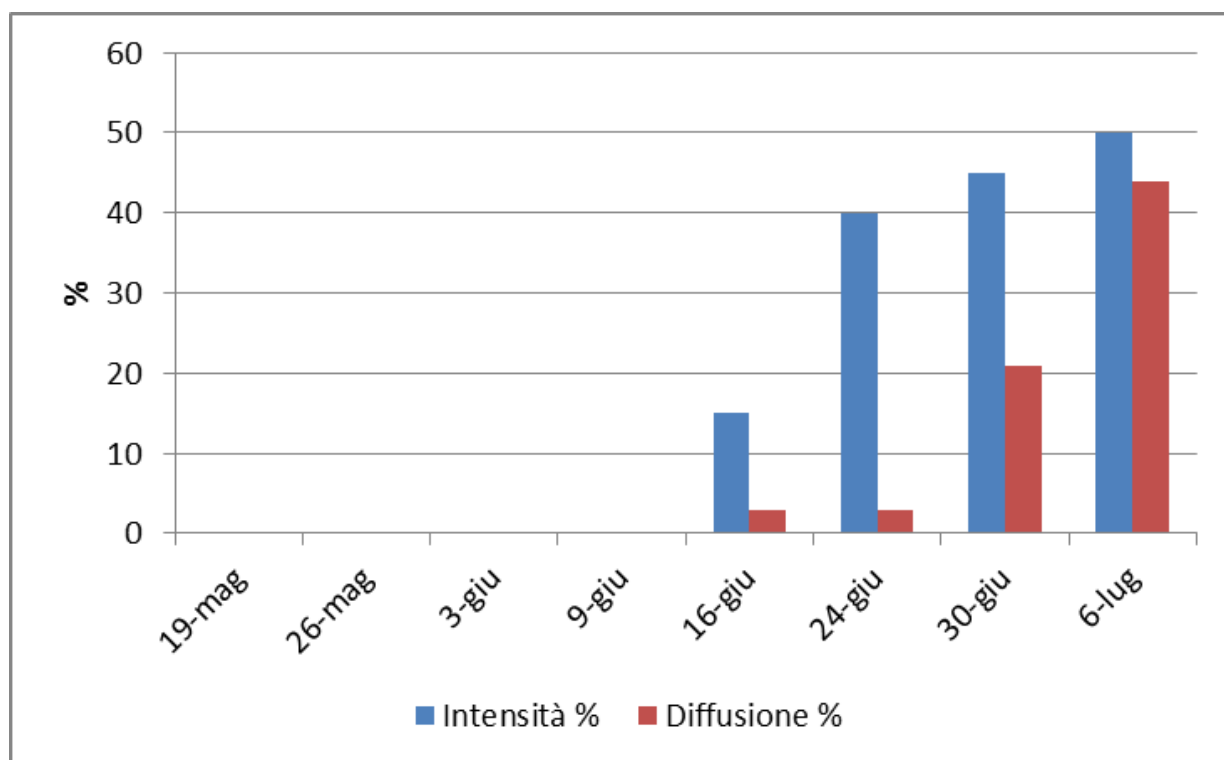


Grappolo

DOC FRIULI GRAVE – Fagagna (UD) – Merlot, sintomi su foglia e grappolo.

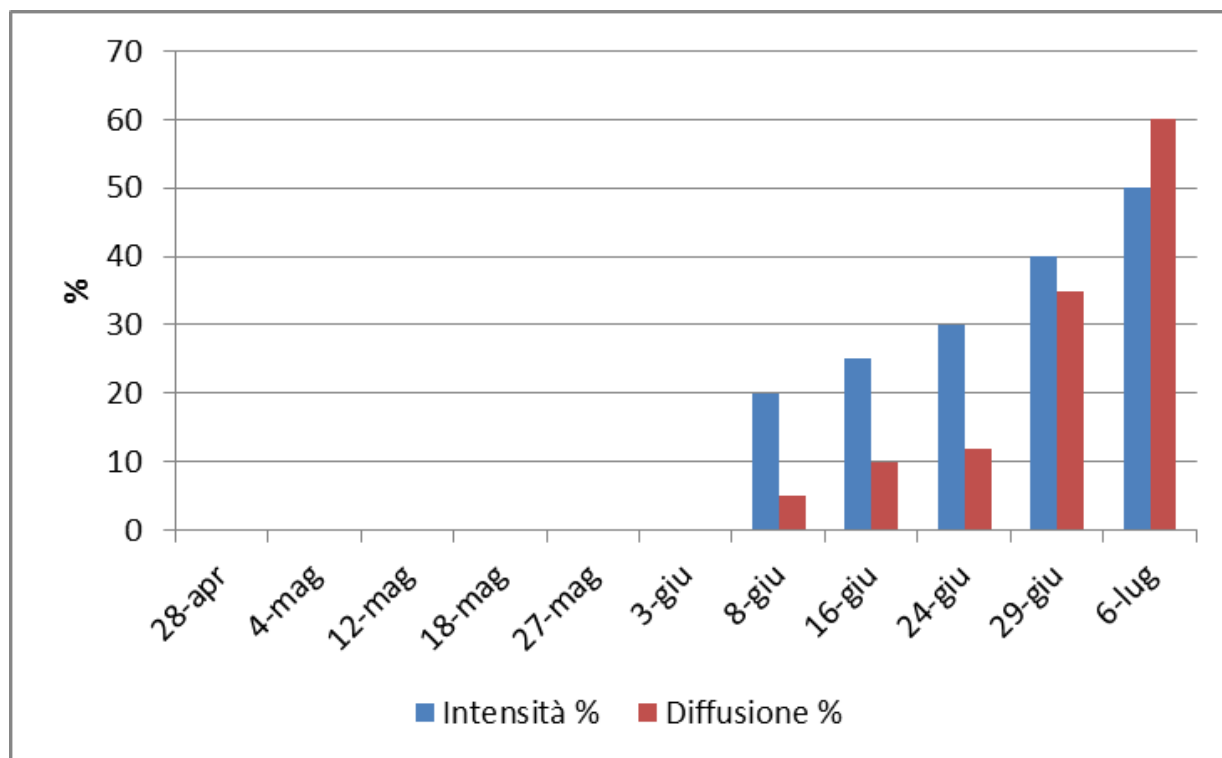


Foglia

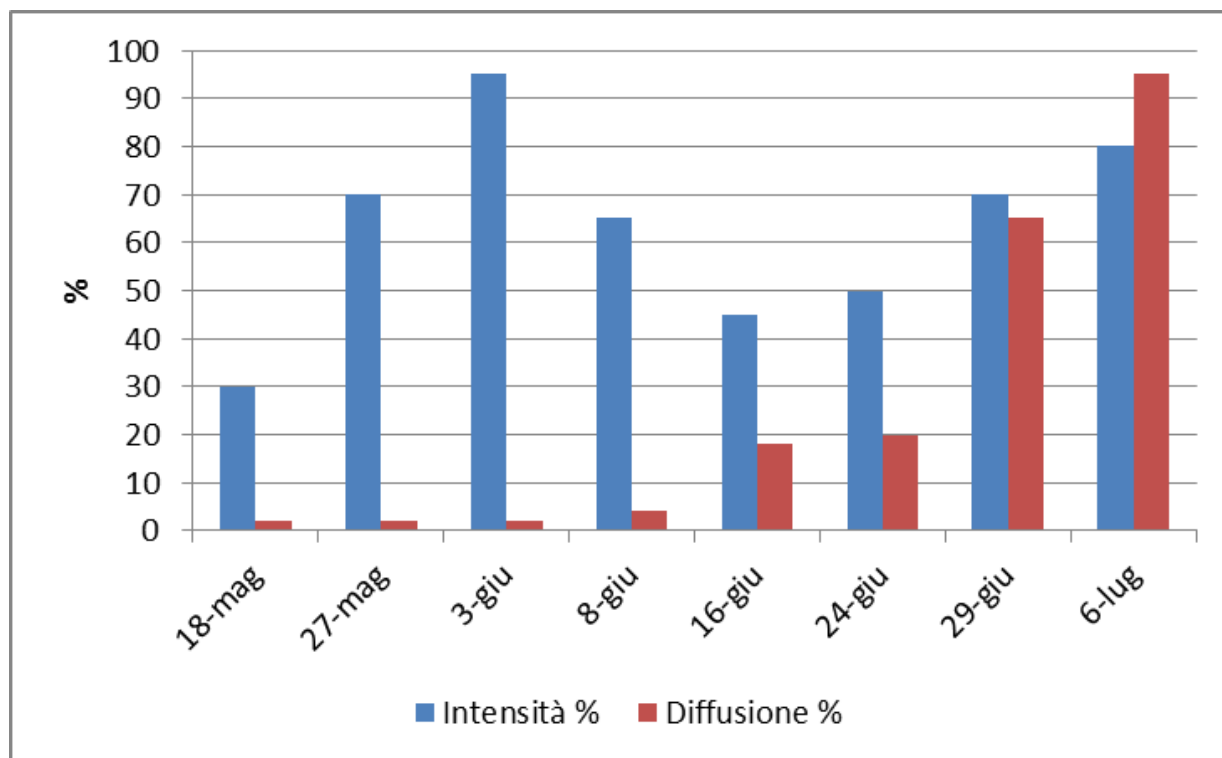


Grappolo

DOC FRIULI GRAVE – Casarsa della Delizia (PN) – Merlot, sintomi su foglia e grappolo.

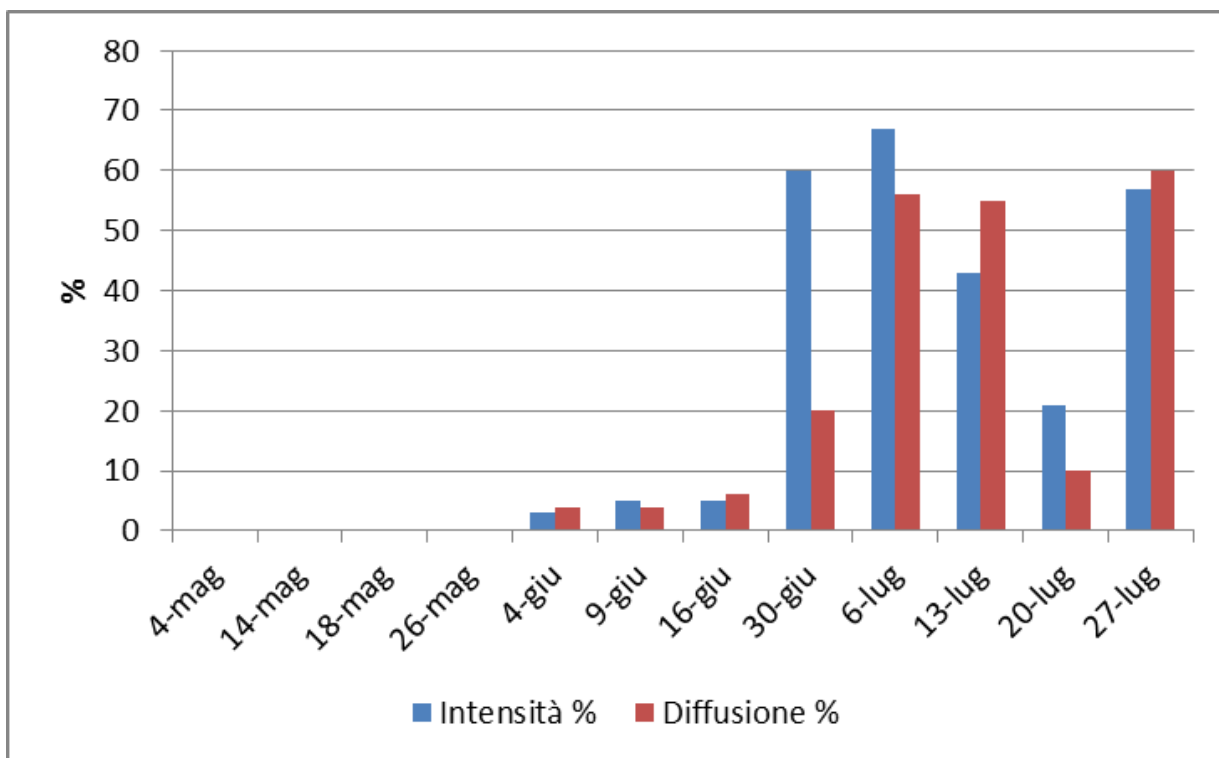


Foglia

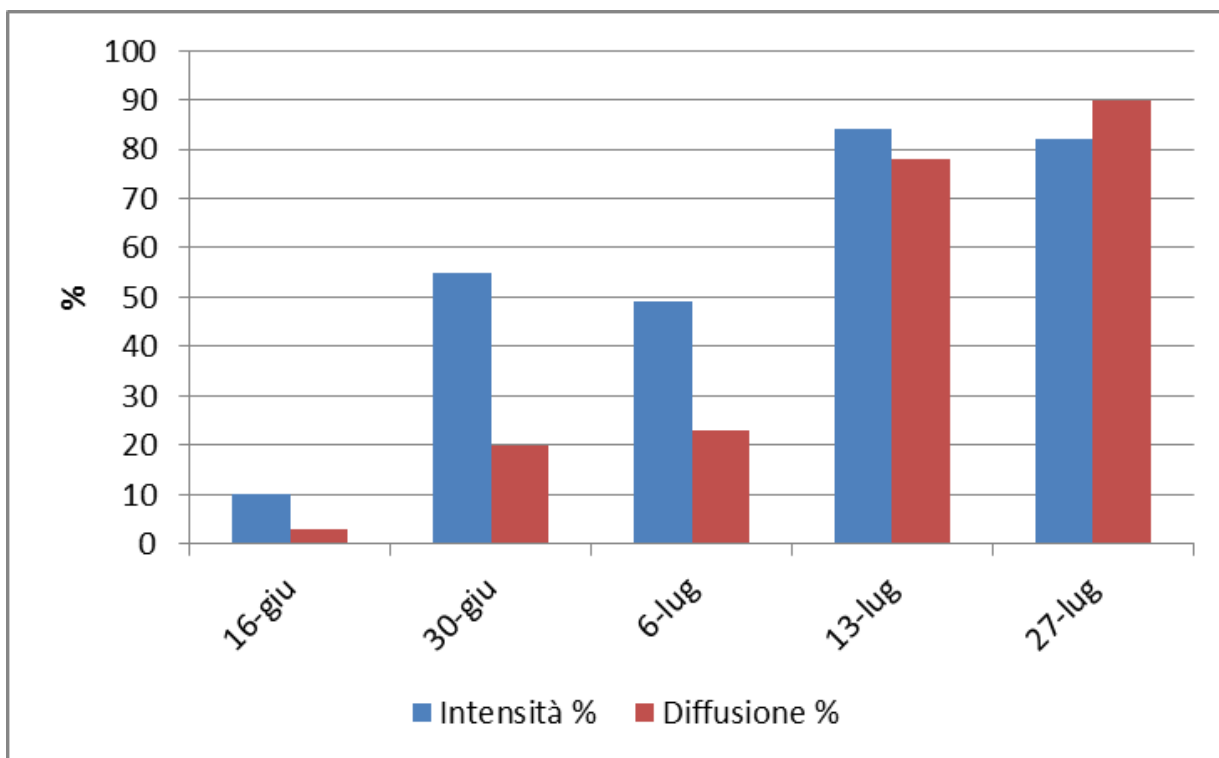


Grappolo

DOC FRIULI GRAVE – Montereale Valcellina (PN) – Cabernet F., sintomi su foglia e grappolo.

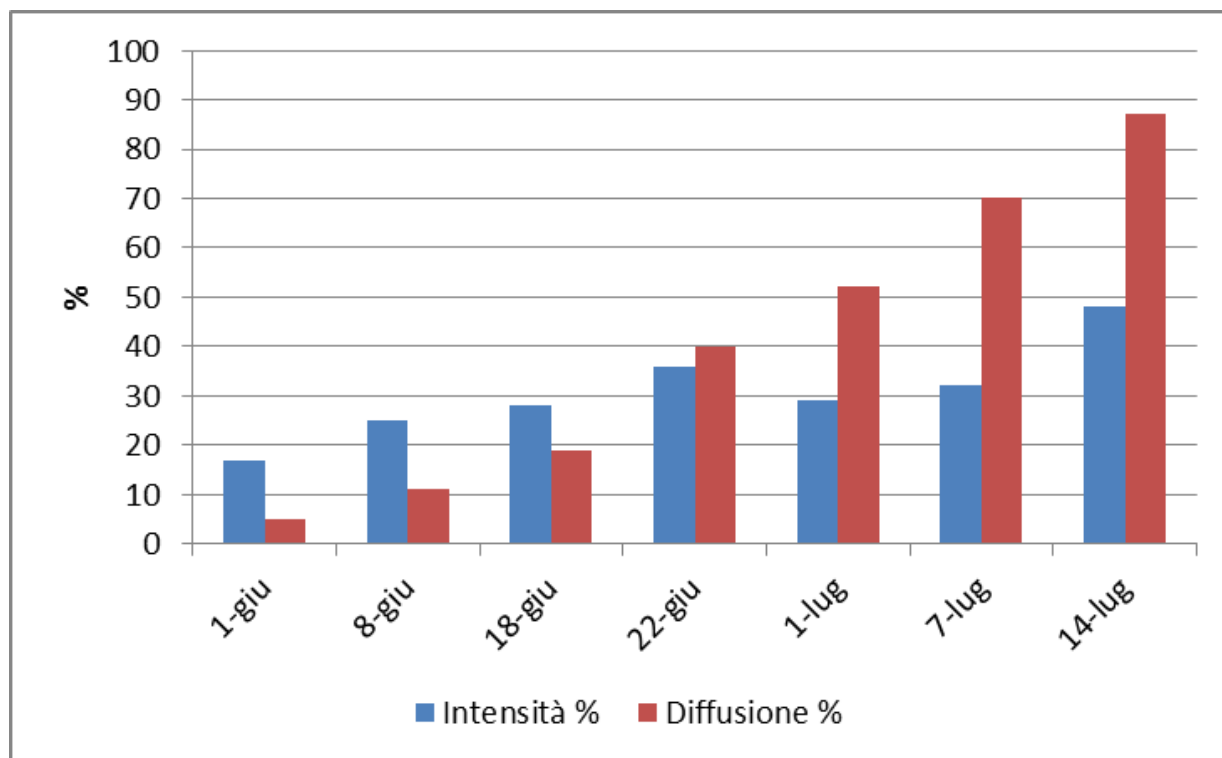


Foglia

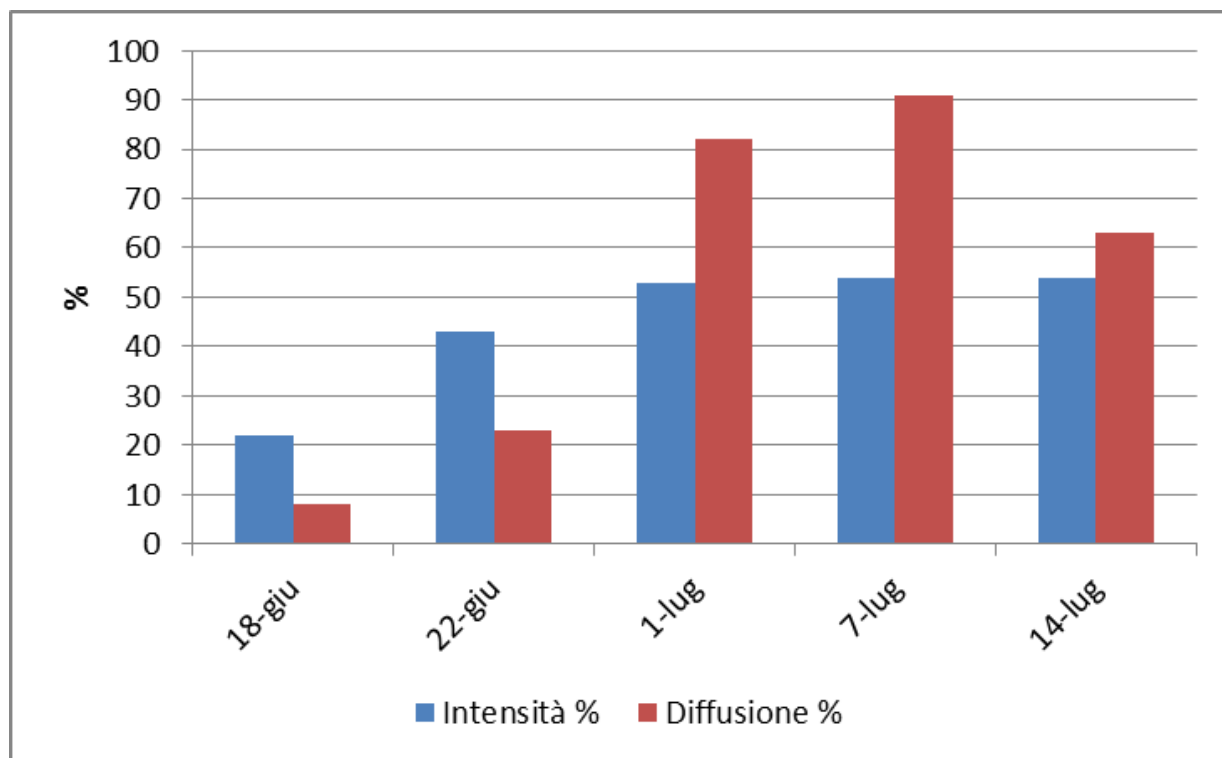


Grappolo

DOC FRIULI ISONZO – San Lorenzo Isontino (GO) – Malvasia, sintomi su foglia e grappolo.

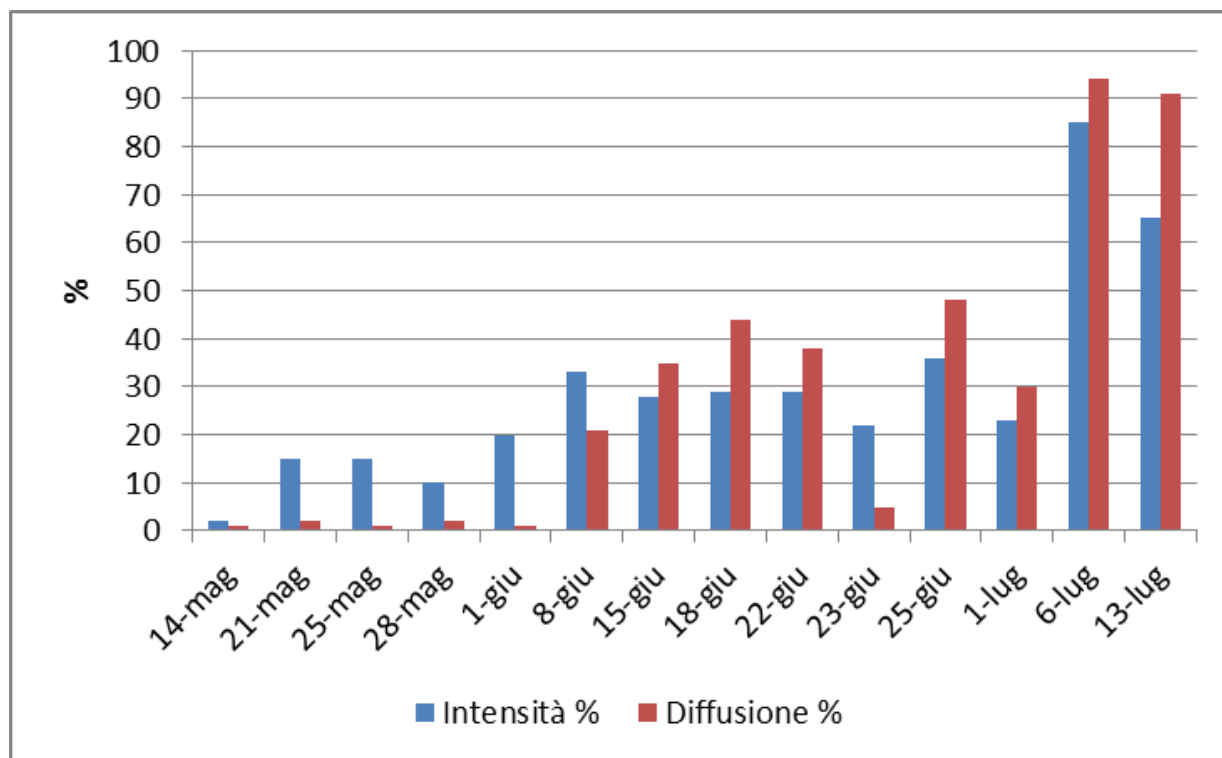


Foglia

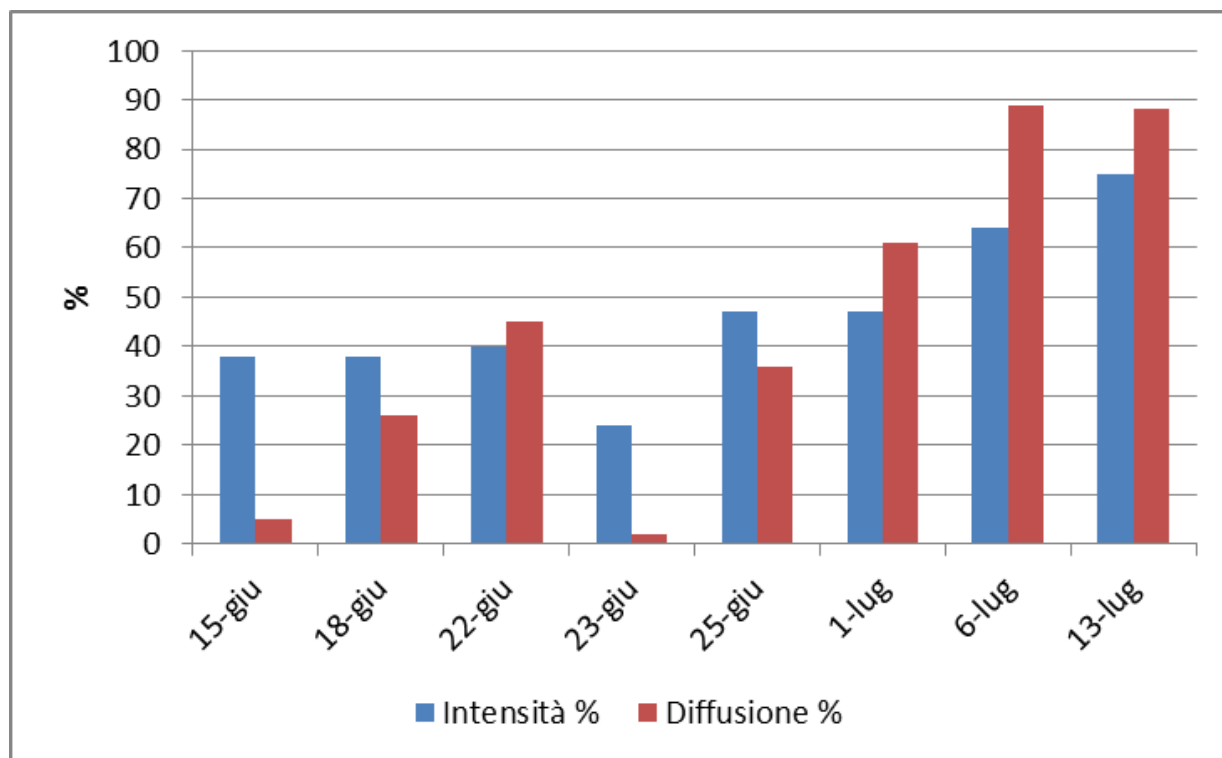


Grappolo

DOC FRIULI ISONZO – Ronchi dei Legionari (GO) – Merlot, sintomi su foglia e grappolo.

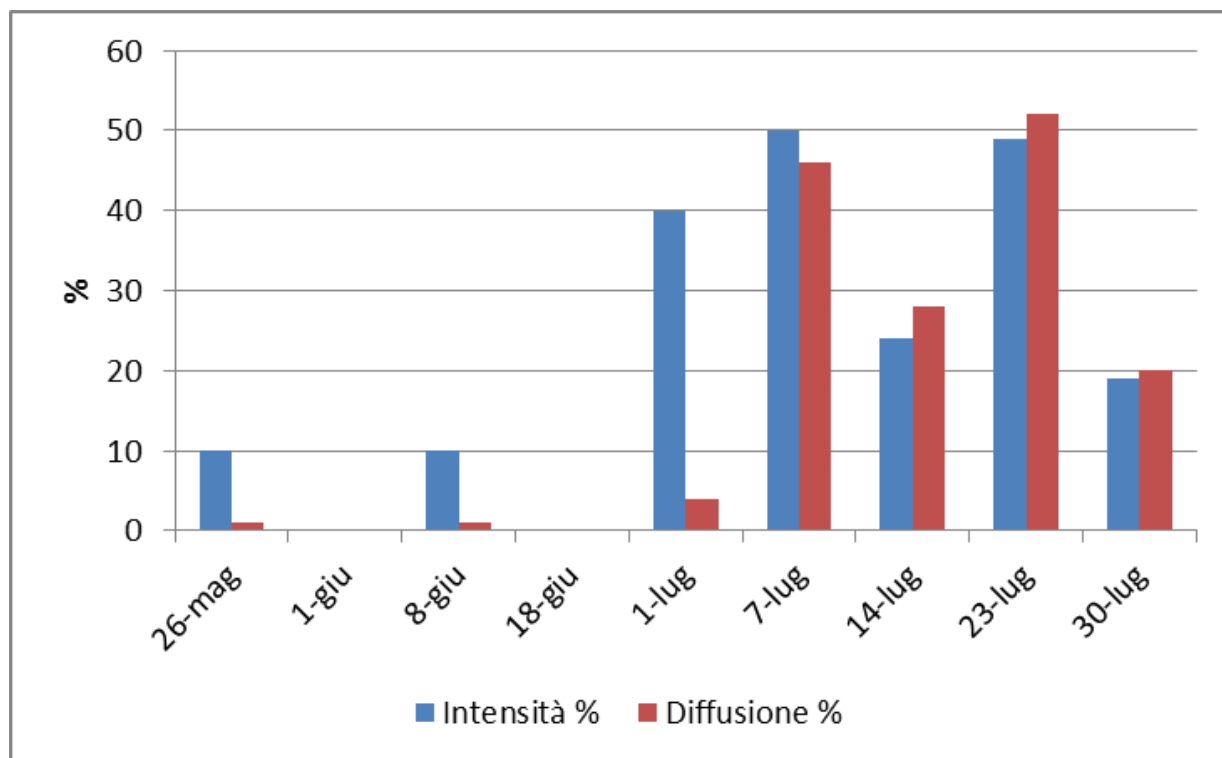


Foglia

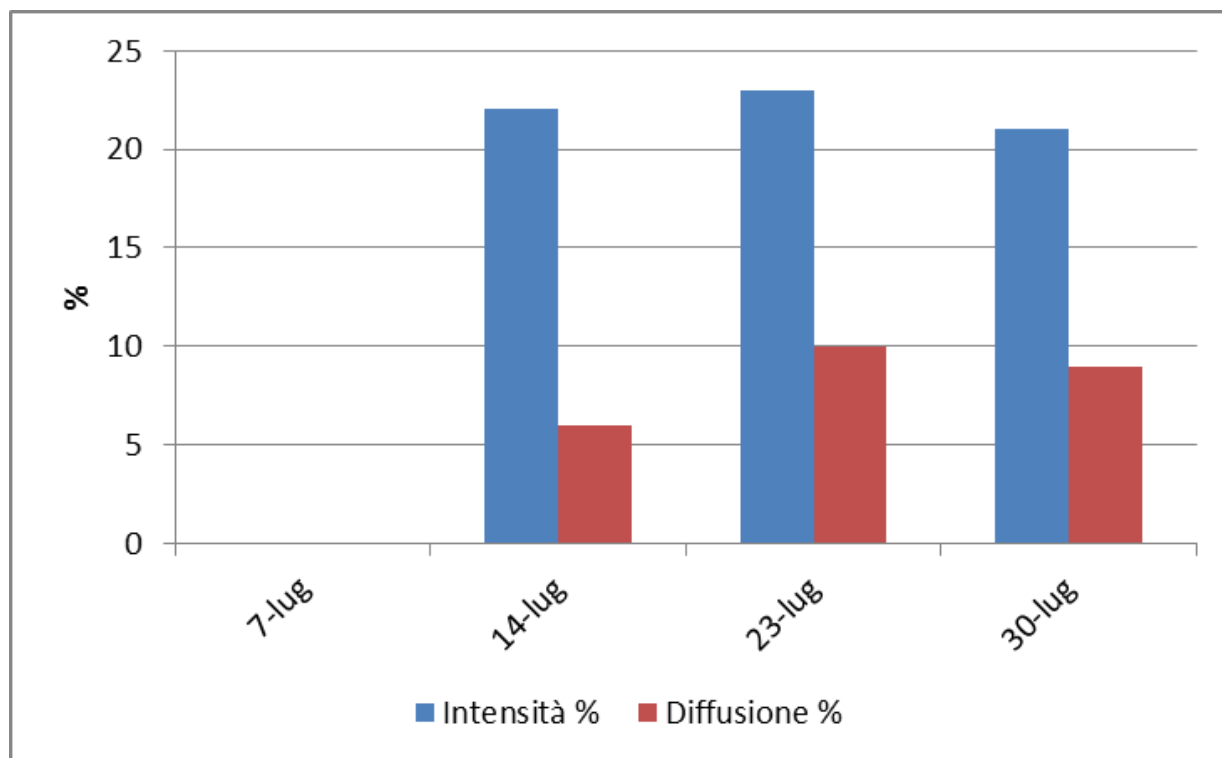


Grappolo

DOC FRIULI ISONZO – Romans d'Isonzo (GO) – Pinot grigio, sintomi su foglia e grappolo.

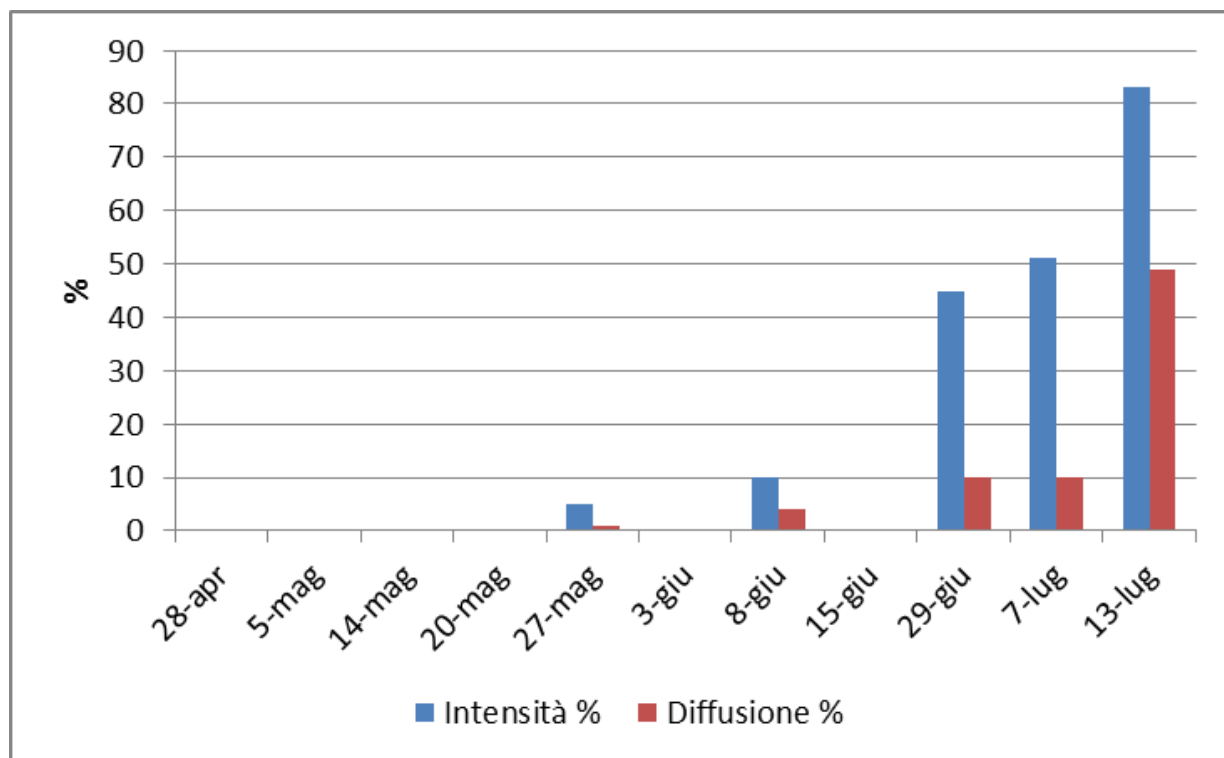


Foglia

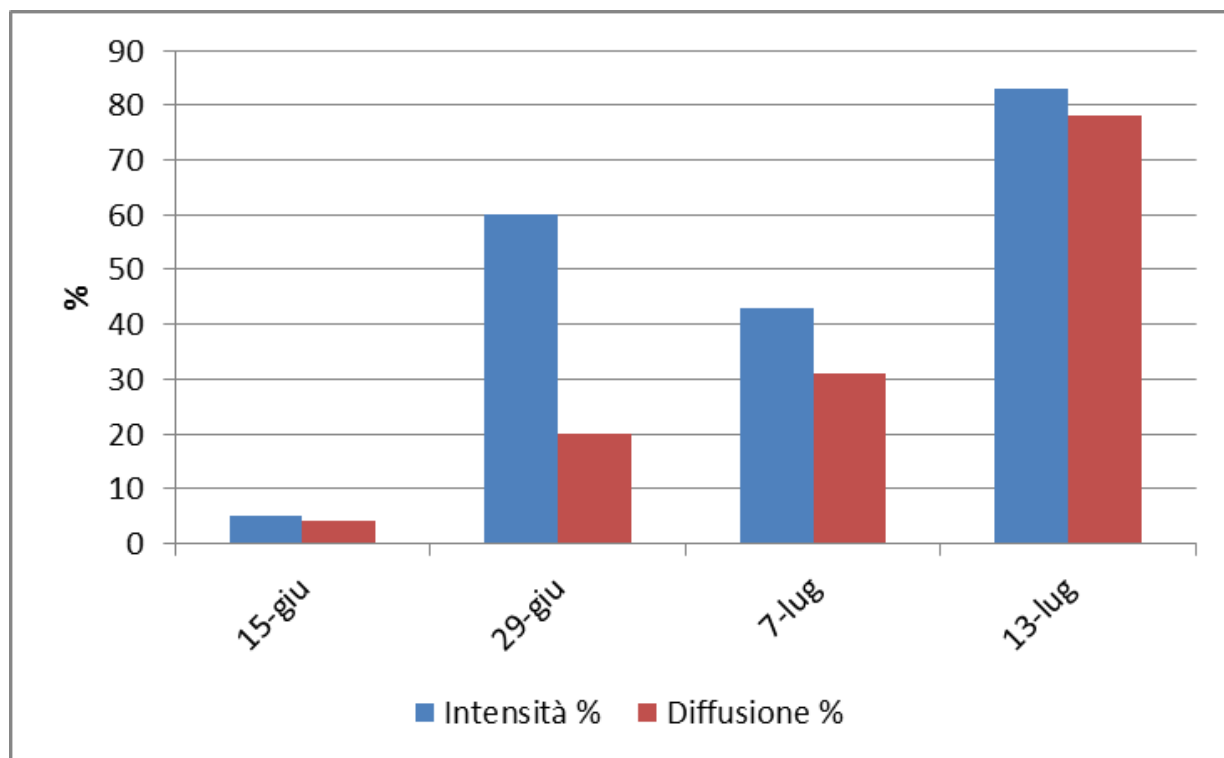


Grappolo

DOC FRIULI LATISANA – Rivignano (UD) – Refosco P.R., sintomi su foglia e grappolo.



Foglia



Grappolo