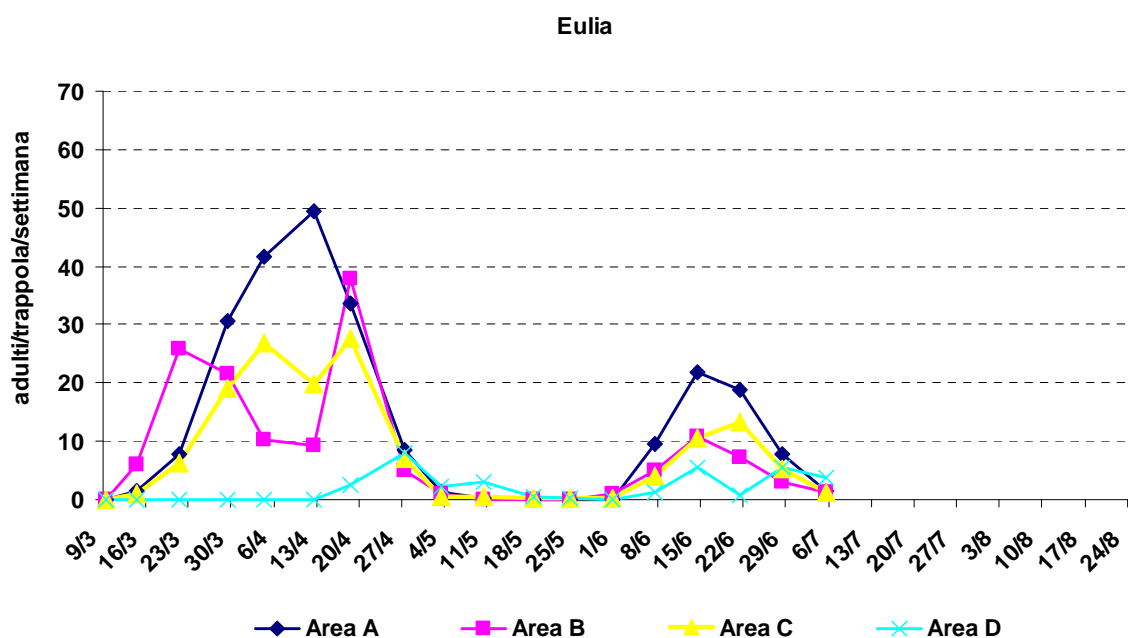


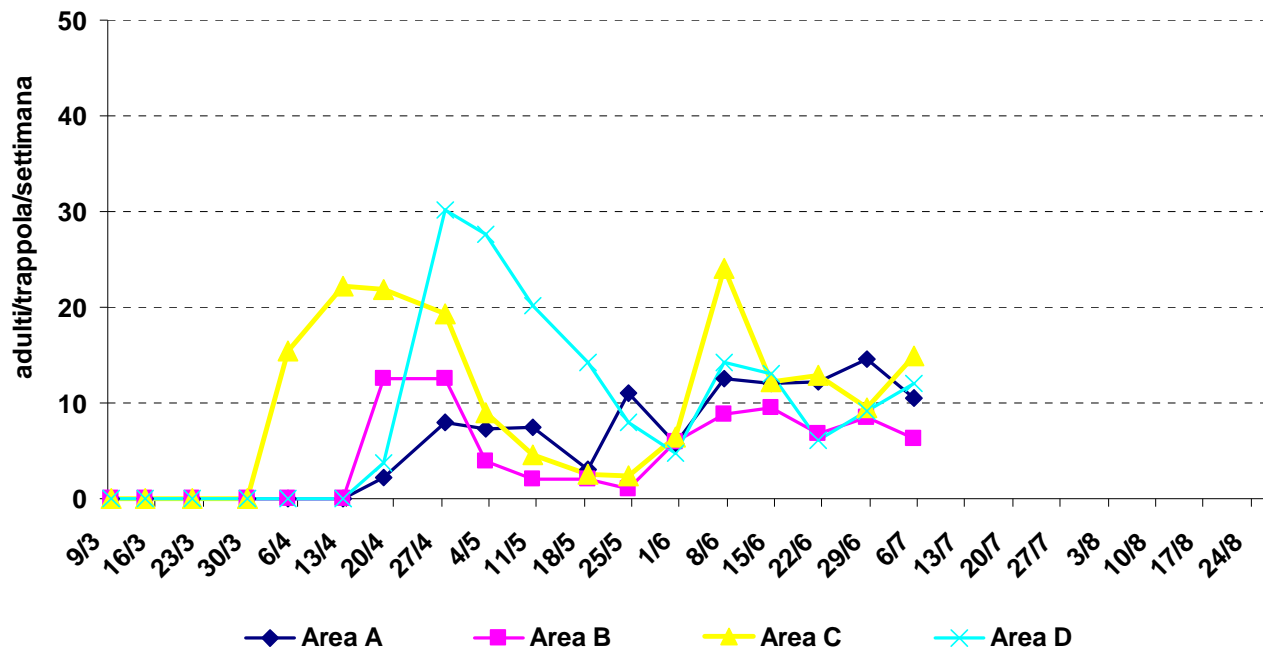
## MONITORAGGIO VOLI LEPIDOTTERI DANNOSI DEL MELO (aggiornamento catture del 6 luglio 2011)

Di seguito viene indicato il valore medio delle catture settimanali riscontrate per i principali lepidotteri dannosi del melo nelle quattro aree di monitoraggio:

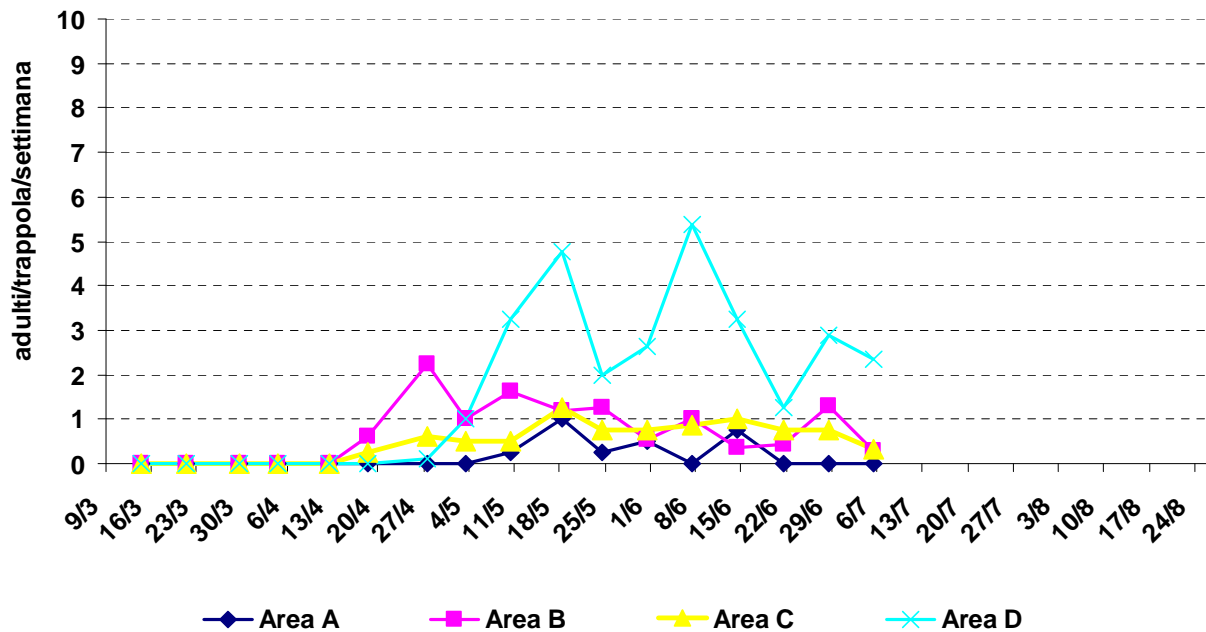
- Area A: Maniago, San Leonardo Valcellina, Osoppo
- Area B: Valvasone, Cordenons, San Vito al Tagliamento, Codroipo, Bicinicco, Rodeano, Mortegliano
- Area C: Latisana, Castions delle Mura, San Canzian d'Isonzo, Fiumicello
- Area D: Tolmezzo



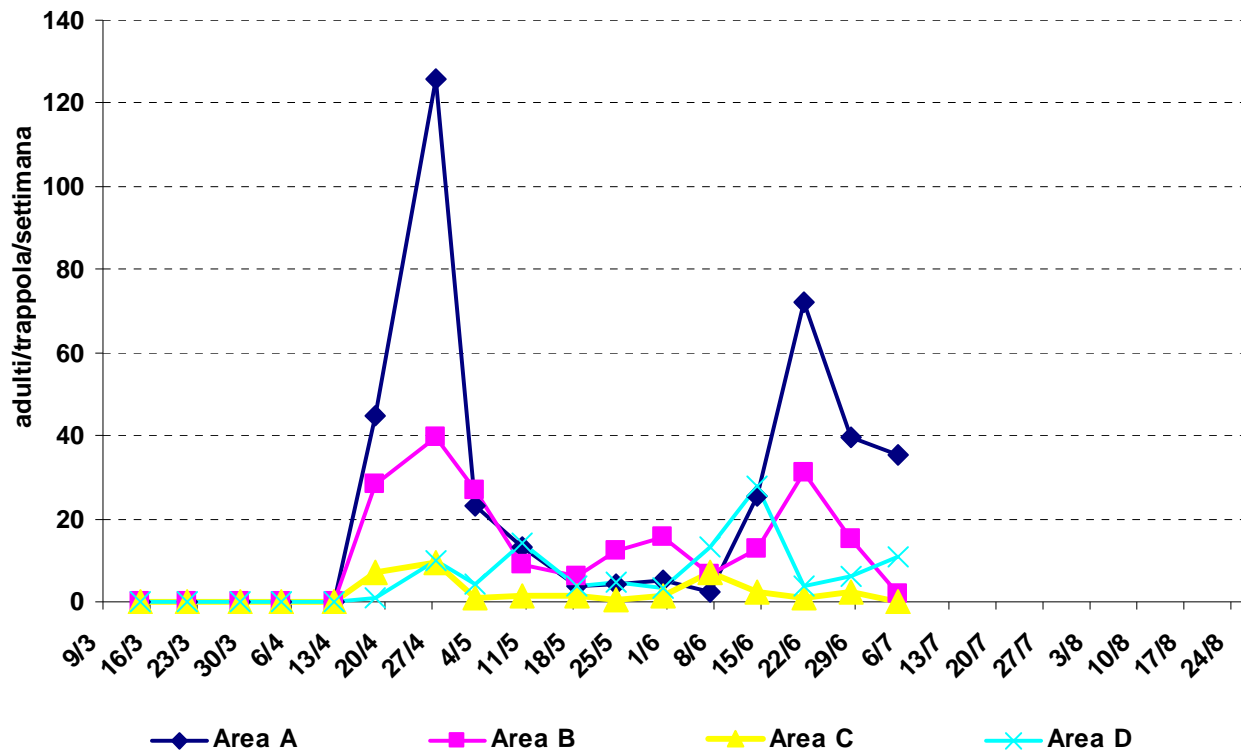
### Tignola orientale del pesco



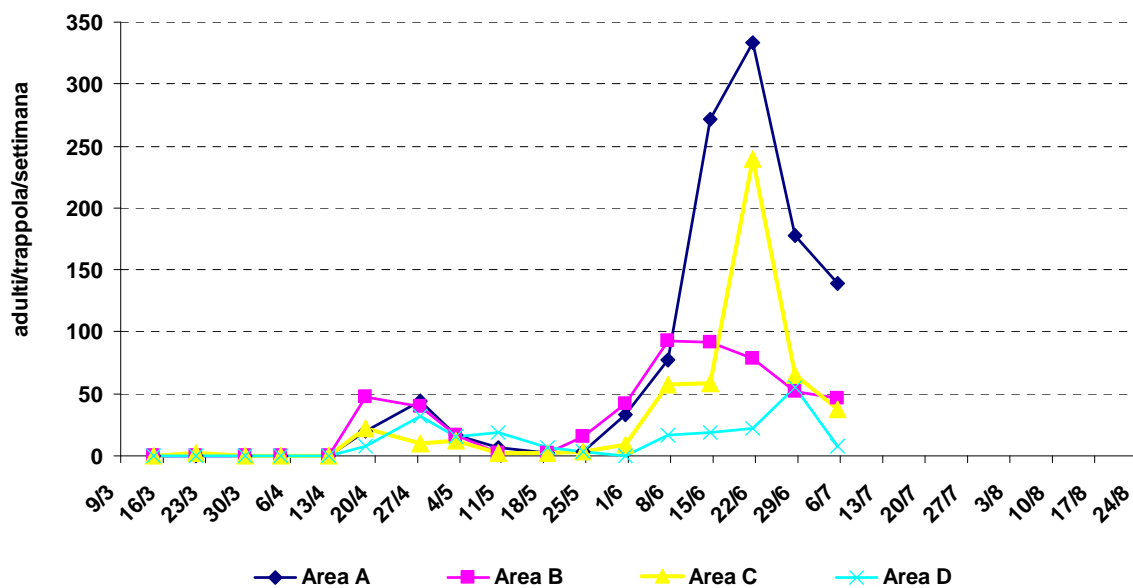
### Carpocapsa



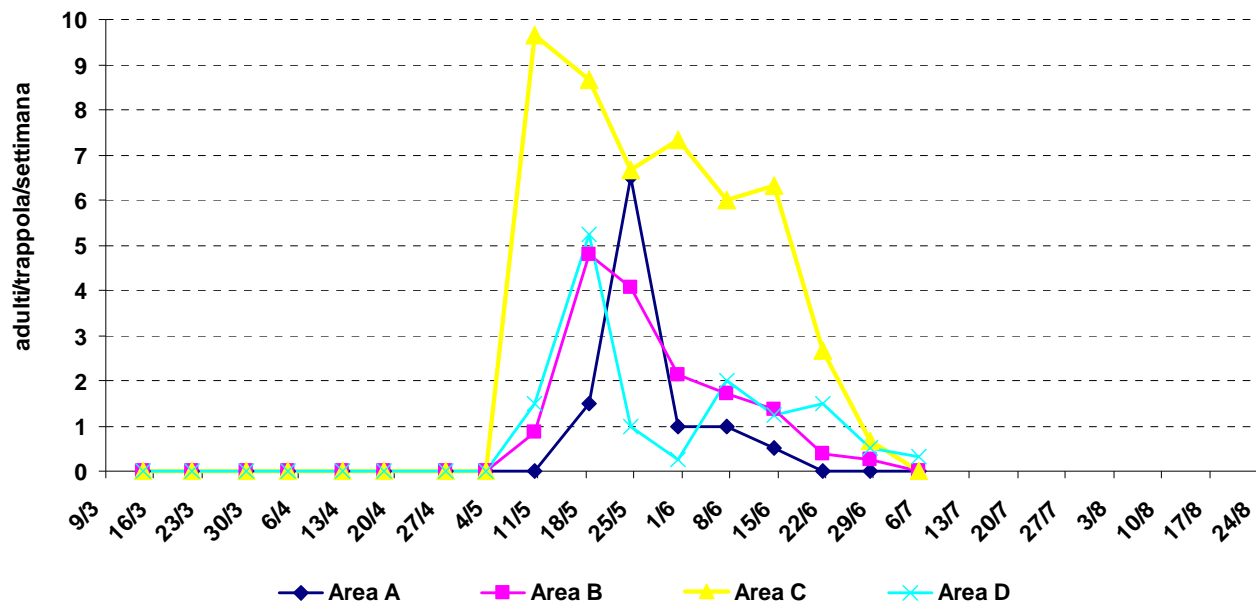
### Cemiostoma



### Litocollete



**Cacecia**



**Tortrice verde**

