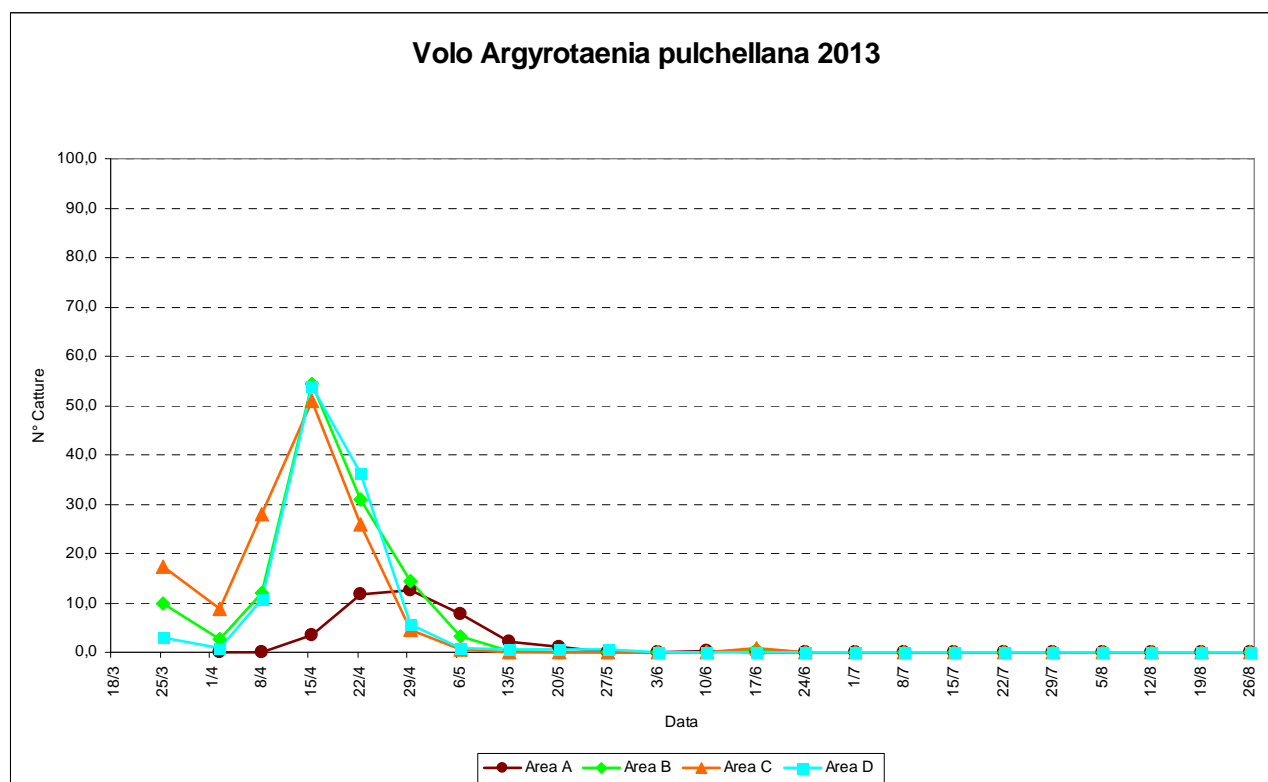


## Voli lepidotteri dannosi del melo – stagione 2013

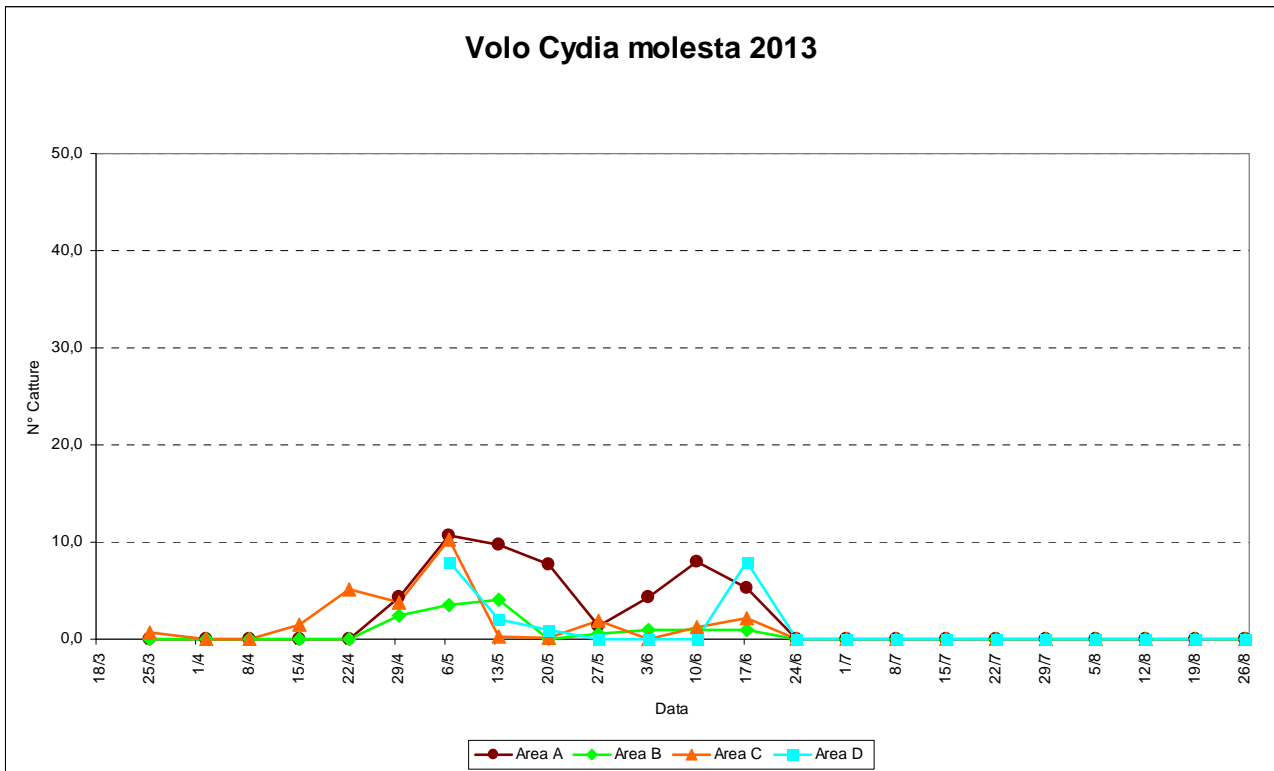
Aggiornamento al 17 giugno 2013

Di seguito viene indicato il valore delle catture settimanali (media adulti/trappola/settimana) riscontrate per i principali lepidotteri dannosi del melo nelle quattro aree di monitoraggio:

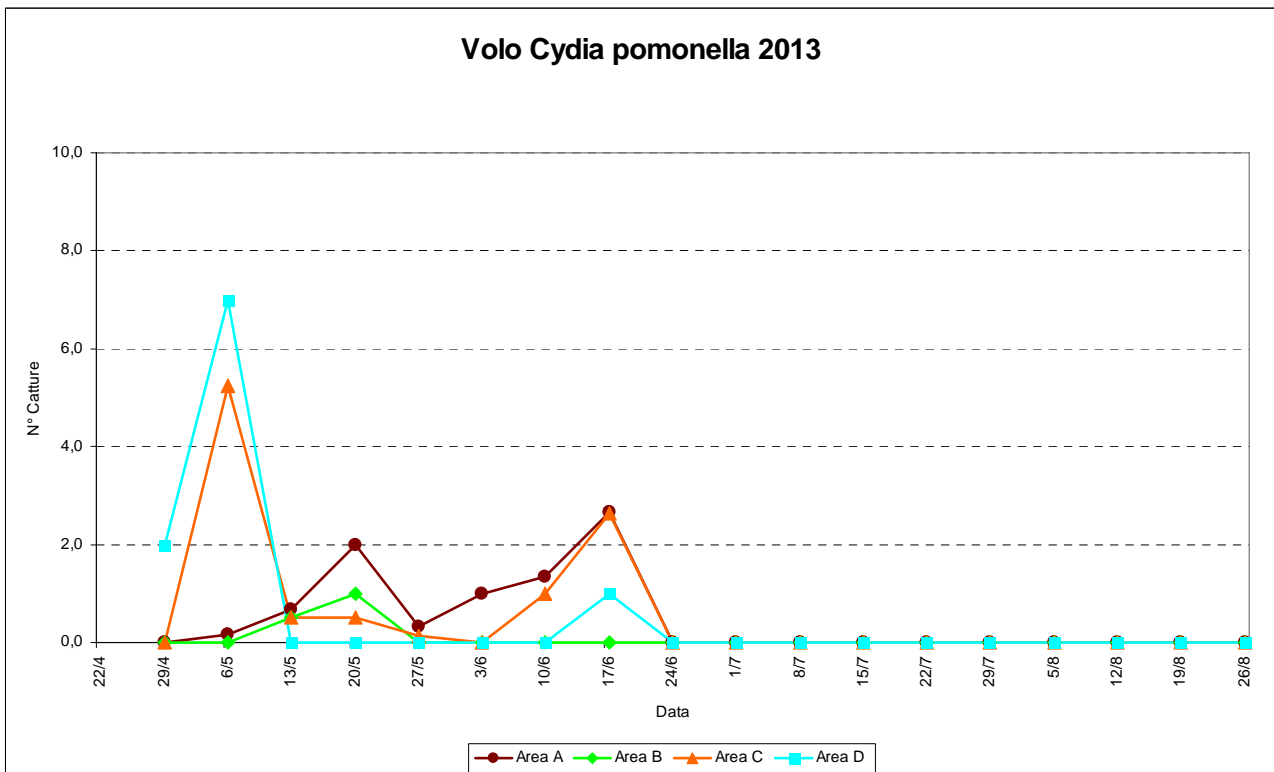
Area A: Montagna  
Area B: Alta pianura  
Area C: Media pianura  
Area D: Bassa pianura



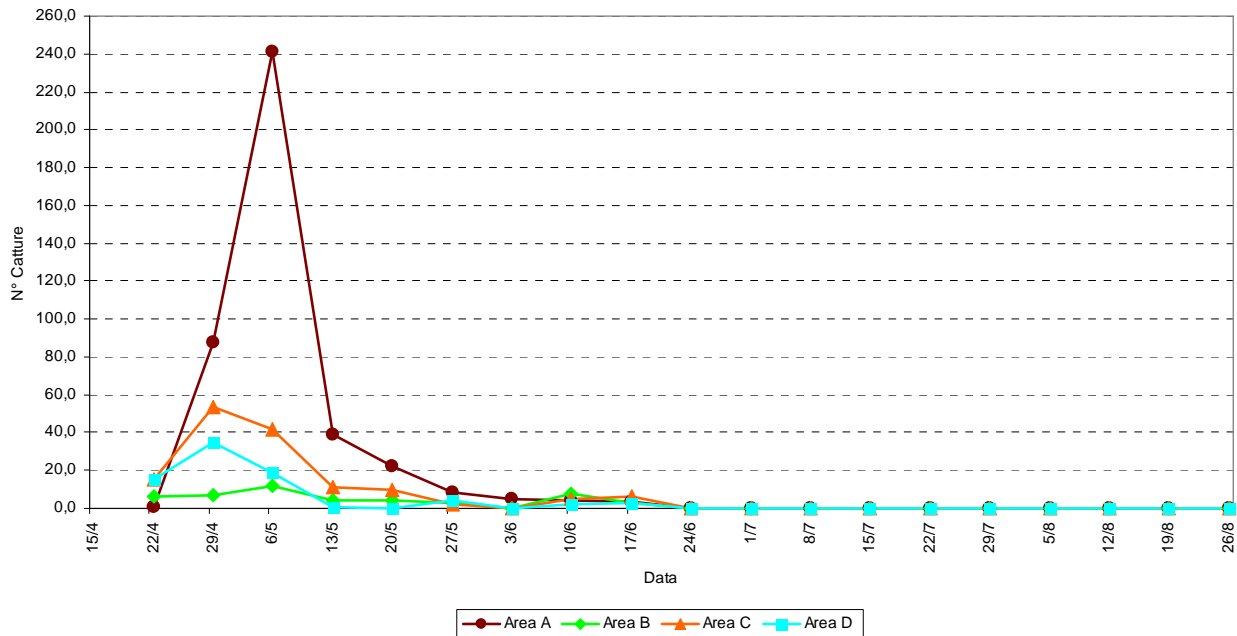
### Volo Cydia molesta 2013



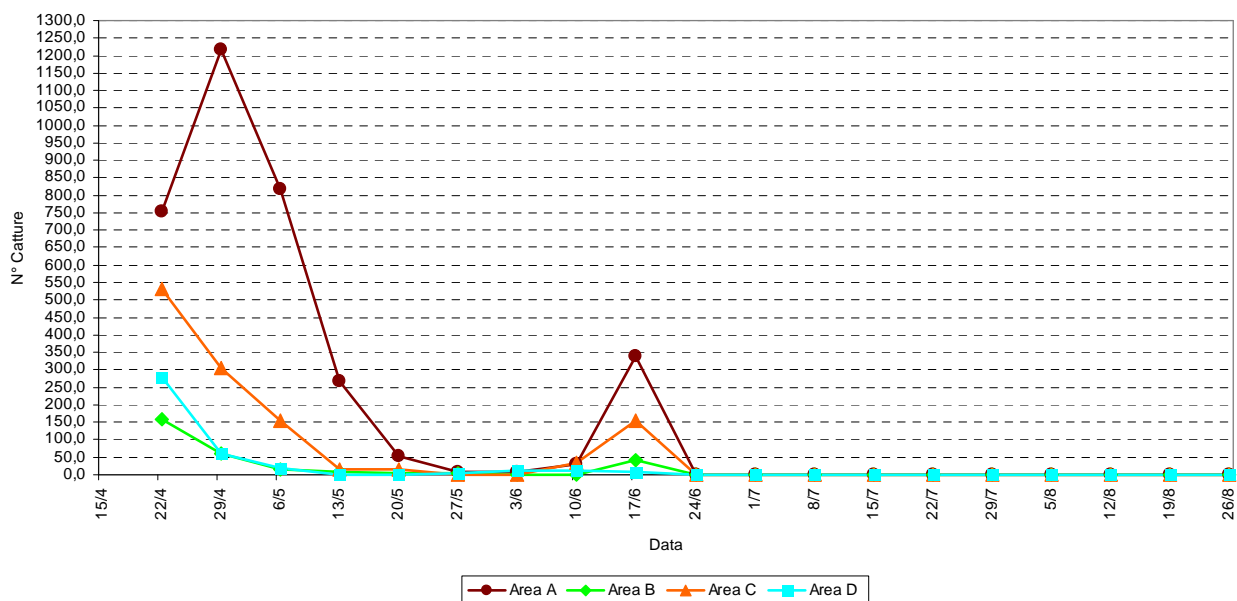
### Volo Cydia pomonella 2013



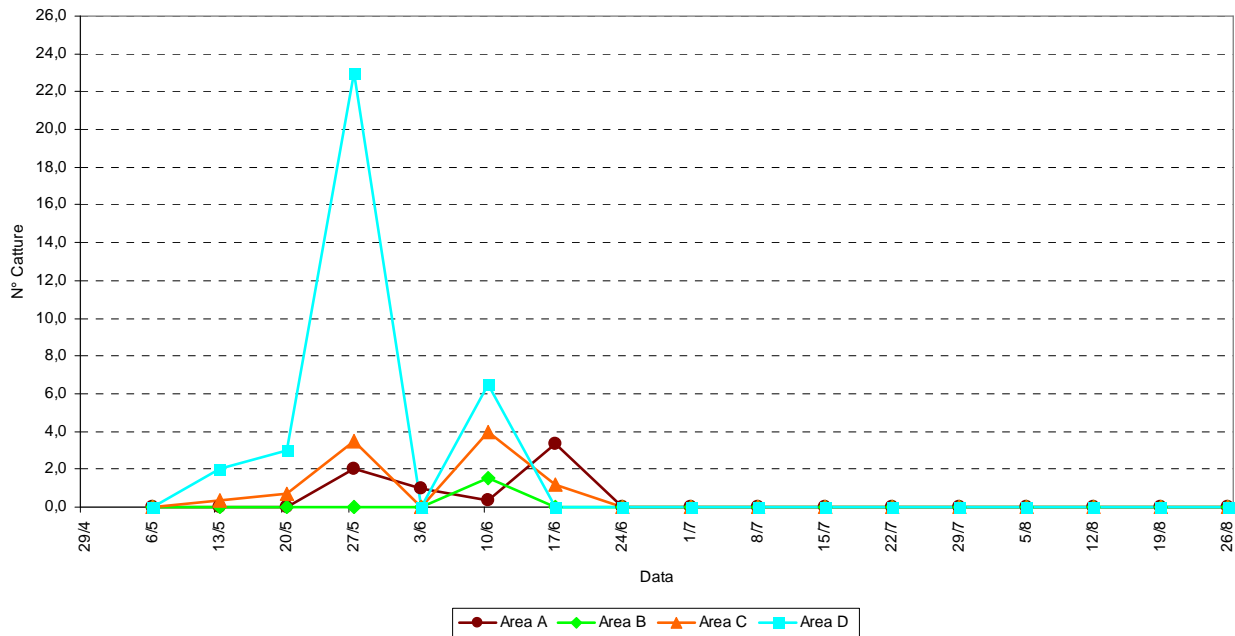
### Volo Leucoptera malifoliella 2013



### Volo Phyllonorycter spp. 2013



### Volo Archips podanus 2013



### Volo Pandemis heparana 2013

